

# Institute Report *Institutsbericht*

No. **20**

October 2012 – September 2013

Institute of East Asian Studies  
*Institut für Ostasienwissenschaften*  
Forsthausweg  
47057 Duisburg  
Tel. 0203 379-4191  
[www.in-east.de](http://www.in-east.de)



*Offen im Denken*



## TABLE OF CONTENT

### INHALTSVERZEICHNIS

Editorial .....	5
<i>Editorial</i>	
Spotlight .....	7
<i>Im Blickpunkt</i>	
<b>1</b> Board and Advisory Council .....	14
<i>Institutsvorstand und Beirat</i>	
<b>2</b> Staff .....	15
<i>Mitarbeiter</i>	
<b>3</b> Research Activities .....	22
<i>Forschungsaktivitäten</i>	
<b>4</b> DFG Research Training Group Risk and East Asia .....	30
<i>DFG Graduiertenkolleg Risk and East Asia</i>	
<b>5</b> Diploma and Doctoral Theses .....	46
<i>Abschlussarbeiten, Dissertationen, Habilitationen</i>	
<b>6</b> Courses Offered .....	53
<i>Lehrveranstaltungen</i>	
<b>7</b> Guest Lectures, Colloquia and Symposia .....	57
<i>Gastvorträge, Vortragsreihen und Symposien</i>	
<b>8</b> Publications .....	60
<i>Publikationen</i>	
<b>9</b> Lectures and Media Presentations .....	66
<i>Vorträge und Medienpräsentationen</i>	
<b>10</b> Professional Activities .....	76
<i>Ehrenamtliche Tätigkeiten</i>	
<b>11</b> Study and Research Visits to East Asia .....	79
<i>Studien- und Forschungsaufenthalte in Ostasien</i>	
<b>12</b> Library Report .....	81
<i>Bibliotheksbericht</i>	
<b>13</b> Duisburg Working Papers .....	82
<i>Duisburger Arbeitspapiere</i>	



**EDITORIAL**  
*EDITORIAL*

Dear Reader,

The Institute of East Asian Studies (IN-EAST) at the University of Duisburg-Essen has in the academic year 2012/13 continued to take up the challenges posed by the rapid global developments. No matter what we count – be it population, gross domestic product, international trade volume, origin of daily products, famous brands – or encounter in our private and professional lives, East Asia's importance cannot be ignored. IN-EAST's response to this historic circumstance is to train students and researchers to deal with the politics, economies and societies of East Asia based on Chinese or Japanese language skills.

Our efforts were boosted by the award of a 4.5-year extension grant for the Research Training Group 1613 Risk and East Asia from the German Research Foundation to recruit two cohorts of in total 10 PhD students plus some post-doctoral fellows. The award was made after a rigorous examination of our performance so far: The research of our first cohorts of doctoral students and post-doctoral fellows and their ability to communicate its relevance and scholarly quality were crucial factors in securing the extension.

IN-EAST's successful application to the German Federal Ministry of Education and Research for a four-year IN-EAST School of Advanced Studies consolidates our work at an even higher level. Focusing on innovation across East Asia, the School integrates our core disciplines (Political Science, Economics, and Sociology) with engineering and cultural studies in six research teams of each one post-doctoral fellow (or junior professor) and two PhD students. The topics to be researched all relate to urban development and e-mobility in East Asia. Among our objectives is to "bring regional studies into the disciplines," to forge new forms of research collaboration, and to develop efficient knowledge transfer. The School is already taking shape, with team leaders in place and doctoral students being appointed. The many new people and new tasks already begin to fill our sizable new wing in Geibelstraße with fascinating new research dynamics.

Our BA Program, introduced during the last few years, is expanding. For the academic year 2013/14, our intake was 70 freshers (20 higher than the target number) in response to this year's higher supply of secondary school leavers.

We are in the process of changing the institute structure to be able to coordinate the many activities better, to ensure that our "branding" is right and to simplify management. A new Institute statute, for example, brings together the various advisory boards in two shared bodies: a "Kuratorium" and an "Akademischer Beirat," the former constituted mainly of leaders in industry, media and organizations, and the latter of scholars.

As will be obvious from the above, IN-EAST is expanding and getting stronger. Innovation is on IN-EAST's agenda in more than one sense. Perhaps it is appropriate that the 30th Annual Meeting of the Euro-Asia Management Studies Association in November 2013 is hosted by us. The topic of the conference is "Innovation in Asia and Europe: Approaches and Answers to New Challenges."

With warm regards,  
on behalf of the Board and all members of IN-EAST

Flemming Christiansen  
(Director IN-EAST)

## Sponsors

It is a pleasure to acknowledge financial support by a number of funding agencies. Our sincere thanks are due to:

Academy of Korean Studies

Alumni und Freunde der Duisburger Ostasienstudien e. V. (AlFreDO)

Bertelsmann-Stiftung

Bundesministerium für Bildung und Forschung (BMBF)

*Federal Ministry of Education and Research*

Chinese Ministry of Education

Deutsche Forschungs-Gemeinschaft (DFG) *German Research Foundation*

Deutscher Akademischer Austausch-Dienst (DAAD)

Deutsch-Japanische Gesellschaft (DJG)

Duisburger Universitäts-Gesellschaft (D.U.G.)

European Commission

EU-Japan Centre for Industrial Cooperation

Japan Society for the Promotion of Science (JSPS)

Konfuzius-Institut Metropole Ruhr *Confucius Institute Metropolis Ruhr*

Ministerium für Innovation, Wissenschaft und Forschung des Landes NRW

Stiftung zur Förderung japanisch-deutscher Wissenschafts- und Kulturbeziehungen (JaDe)

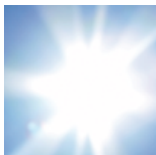
## SPOTLIGHT IM BLICKPUNKT

### First BA Class Starts Studying Abroad *Erster BA-Jahrgang beginnt Auslandsstudium*



Der Pionier-Jahrgang des BA-Studiengangs „Moderne Ostasienstudien“ hat im September 2013 sein einjähriges Auslandsstudium begonnen. Insgesamt 32 Studierende sind an unsere zehn Partneruniversitäten in Japan und China aufgebrochen. Dank der Unterstützung des Konfuzius Instituts Metropole Ruhr haben sechs der Chinesisch lernenden Studierenden ein Stipendium erhalten, mit dem sie aus einer Vielzahl von chinesischen Universitäten auswählen durften. Da die Studierendenzahl des zweiten Jahrgangs noch einmal größer ist als die des ersten, haben wir uns erfolgreich um den Ausbau unserer Austauschabkommen bemüht, sodass wir auch zukünftig allen BA-Studierenden gebührenbefreite Studienplätze im Ausland anbieten können. Unterstützt wurden unsere Bemühungen durch Mittel des DAAD-Programms „BA plus“. Weitere Informationen finden Sie unter: <http://www.uni-due.de/in-east/126/>

### New: BMBF Project IN-EAST School of Advanced Studies



The IN-EAST School of Advanced Studies is the second significant project under roof of the IN-EAST. The IN-EAST application was evaluated positively by the Federal Ministry of Education and Research (BMBF) and on May 5, 2013, the IN-EAST received the BMBF Förderbescheid.

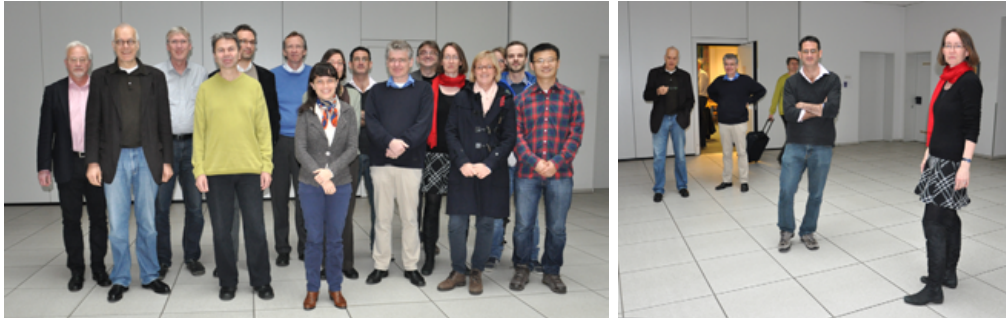


The IN-EAST School of Advanced Studies is aiming to understand processes of innovation embedded in society as a whole. The focus lays on the interdependent topics of new concepts of mobility and urban systems in Japan, China and Korea.

The organization of research will be based on the research group concept already well established in the natural sciences but still new to social sciences. The School will at its core feature six research groups, which will be constituted by one Junior Professor/Post-doc and two PhD students each. Each research group will work on one specific aspect of the overall research agenda. The idea is to educate qualified researchers by giving them a high level of responsibility in terms of group leadership and training through mentors. Based on the different research backgrounds, methodologies and theories the mentors will work closely with certain School members. However, there is going to be a high mode of social interaction which allows for the research groups to work together.

Four out of six research groups have assumed a definite form and will be working on the subjects of “Urban Systems in East Asia”, “Political Innovations in East Asian Cities”, “Innovation in Chinese Policy Processes: Cities in the Development of Low-Carbon Strategies. Sub-National Innovation and National Policy” as well as “Behavioral Economics and East Asia”.

The IN-EAST is working with specialists from across the university and we are happy to report that we have won five mentors from institutes outside the IN-EAST for the project – and the team of mentors is still growing. **Prof. Dr. Jeannette Brosig-Koch** (Essener Labor für Experimentelle Wirtschaftsforschung, elfe), **Prof. Dr. Ferdinand Dudenhöffer** (Automotive Economics), **Prof. Dr. Jens Martin Gurr** (Anglophone Studies), **Prof. Dr. Heike Proff** (International Automotive Management) and **Prof. Dr. J. Alexander Schmidt** (City Planning and Urban Design) are acting as mentors for our new research group leaders at the IN-EAST School of Advanced Studies.



The growing IN-EAST School team went to Hamminkeln for a retreat. Mentors, doctoral and post-doctoral fellows as well as the administrative team got together in order to lift the project to the next level.

## **Exhibitions at the IN-EAST / Ausstellungen am IN-EAST**

### **Japan During the Meiji Period / Japan in der Meiji-Zeit**

#### **Historische Fotografien aus dem späten 19. Jahrhundert**

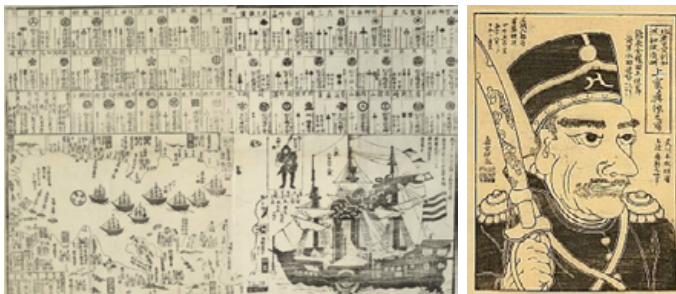
*20. Juni bis 2. Oktober 2012*



Nach langer selbstgewählter Isolation öffnete sich Japan Mitte des 19. Jahrhunderts dem Westen. Während der Tokugawa-Zeit (1603–1868) war es nur wenigen Ausländern erlaubt, nach Japan zu fahren. Die Kontakte mit dem Westen beschränkten sich weitgehend auf die kleine, der Stadt Nagasaki vorgelagerten Insel Deshima, wo die Niederlande einen Handelsstützpunkt unterhielten.

Mit der Ankunft der „schwarzen Schiffe“ des US-amerikanischen Kommandanten Matthew C. Perry 1853 in Yokohama und unter dem Eindruck der militärischen und technologischen Überlegenheit des Westens öffnete Japan seine Grenzen. Unter dem jungen Meiji-Tenno (1868–1912) setzte eine rasche Modernisierung der japanischen Gesellschaft ein.

Wahrscheinlich kam mit den „schwarzen Schiffen“ 1853 auch die Fotografie nach Japan, die sich durch den rasch zunehmenden Handel mit dem Westen schnell verbreitete.



Die Flotte Perrys auf einem historischen japanischen Druck

Matthew C. Perry

Die Ausstellung präsentiert historische Fotografien aus dem späten 19. Jahrhundert. Es handelt sich hierbei um Reiseansichten früher Japanreisender, die überwiegend als handkolorierte Atelieraufnahmen vorliegen. Ein Großteil der Exponate stammt aus der Sammlung von Karl von Eisendecker, der von 1875 bis 1882 erst deutscher Ministerresident und dann Gesandter in Tokyo war.



Die Aufnahmen spiegeln insgesamt Alltagsszenen und Stadtansichten aus der frühen Meiji-Zeit wider, wahrscheinlich aufgenommen aus der Perspektive westlicher Reisender, die entweder selbst Fotos anfertigten, oder für die in den größeren Städten von japanischen und ausländischen Fotoateliers Landschafts- und Genrefotographien erstellt wurden. Sie betonen in ihren Motiven daher stets das traditionell Exotische und zeigen höchst selten neuere Entwicklungen, die sich unter dem westlichen Einfluss gerade in der Meiji-Zeit rasch in Japan verbreiteten. Somit erlauben uns die Fotos auch einen Einblick in das Leben der Menschen und die Architektur vor der Öffnung Japans.

Auf einigen wenigen Photographien ist aber auch der westliche Einfluss zu sehen. Die Bilder des Meiji-Tenno und einiger seiner Minister in westlicher Kleidung symbolisieren den Willen der Herrschenden, westliche Einflüsse aufzunehmen. Die Modernisierung der Gesellschaft war aber nicht unumstritten, wie die wenig charmante Zeichnung von Kommandant Perry (s. o.) aufzeigt.



Die 55 Bilder der Ausstellung sind in vier Bereiche untergliedert: Gewerbe, Transport, Porträts und Gruppenaufnahmen, Architektur.

Die Ausstellung wurde vom Japanischen Kulturinstitut aus den Sammlungen von Werner Kourist (Linz am Rhein) und dem Japanologischen Seminar der Universität Bonn zusammengestellt.

## **China's Metropolis in Transition / Chinas Metropolen im Wandel – Die Zweite Transformation –**

**Poster and Photo Exhibition by Michael Waibel / Poster- und Fotoausstellung von Michael Waibel** (Geographisches Institut der Universität Hamburg)

6. November 2012 bis 17. April 2013



Die Vielschichtigkeit des wirtschaftlichen und gesellschaftlichen Wandlungsprozesses seit Ende der 1970er Jahre in China zeigt sich insbesondere in den chinesischen Metropolen. Gleichzeitig stellen diese das Schaufenster zu einer zunehmend globalisierten Welt dar, in der China eine immer bedeutendere Rolle einnimmt.

### **Von „Made in China“ zu „Created in China“**

China steht vor der Herausforderung der sogenannten „Zweiten Transformation“. Darunter versteht man die Abkehr von einem rein quantitativen Wirtschaftsmodell, basierend auf niedrigen Arbeitskosten, hin zu Waren und Dienstleistungen höherer Wertschöpfung, verbunden mit geringerer Umweltbelastung.

### **Metropolen als Impulsgeber**

In den Metropolen findet Auf- und Umbruch statt. Urbane Räume werden restrukturiert, ehemalige Fabrikareale erfahren eine Konvertierung hin zu Kultur & Kreativität, werden Teil städtischer Vermarktungsstrategien.

### **Von „Made in China“ zu „Sold in China“**

Der wachsende Wohlstand macht aus der „Fabrik der Welt“ einen zunehmend attraktiven Absatzmarkt, auch für hochwertige chinesische Produkte.

Die Ausstellung entstand in Kooperation mit der Arbeitsgemeinschaft für Pazifische Studien e.V. (APSA). Sie war Bestandteil der Veranstaltungsreihe *Chinatime Hamburg 2012*, organisiert vom Senat der Freien und Hansestadt Hamburg. Sie wird von der Arbeitsstelle für Wissens- und Technologietrans-

fer (AWiTT) der Universität Hamburg unterstützt. Deutsche Forschungsgemeinschaft (DFG): Schwerpunktprogramm SPP 1233 *Megacities – Megachallenge. Informal Dynamics of Global Change.*



Das IN-EAST dankt allen Beteiligten für die Übernahme der Ausstellung.

## 50 Years Korean Miners and Nurses in Germany / 50 Jahre Koreanische Bergarbeiter und Krankenschwestern in Deutschland

### Fotos von Herlinde Koelbl und Kim Sperling



9. Juli bis 12. August 2013, Eröffnungsveranstaltung:  
Dienstag, 16. 7. 2013, 18 Uhr im Gebäude LE, 7. Etage

Vor 50 Jahren, im Dezember 1963, schlossen die BR Deutschland und die Rep. Korea einen Vertrag über die Einwanderung von koreanischen Gastarbeitern, die als Bergarbeiter jeweils für 3 Jahre in Deutschland arbeiten sollten. Arbeitskräftemangel in Westdeutschland und Armut in Südkorea waren die Beweggründe für dieses Abkommen, das rund 8 000 Koreanern nach und nach in den nächsten Jahren die Gelegenheit gab, Armut und Perspektivlosigkeit in ihrer Heimat zu entfliehen. 1970 gab es ein ähnliches Abkommen über die Einwanderung von ca. 10 000 koreanischen Krankenschwestern nach Deutschland.

Viele von ihnen sind länger als vorgesehen in Deutschland geblieben oder leben noch heute hier.

Die Fotografen **Herlinde Koelbl** und **Kim Sperling** haben einige der heute in Deutschland lebenden Einwanderer besucht und sie in ihrem Alltagsleben fotografiert, dazu auch viele Dokumente, die von ihrer besonderen Situation erzählen.

Diese Fotoausstellung wurde von der Agentur g+h communication konzipiert. **Rhan Gunderlach**, **Hye-jin Choi** und **Annette Hornung-Pickert** wollen damit an die Migrationsgeschichte der koreanischen Krankenschwestern und Bergarbeiter erinnern. Die Ausstellung war zuerst im April 2013 in der Koreanischen Kulturabteilung in Berlin zu sehen, wanderte über mehrere Stationen in Deutschland und wurde im Oktober/November 2013 in der Galerie der Korea Foundation in Seoul gezeigt.

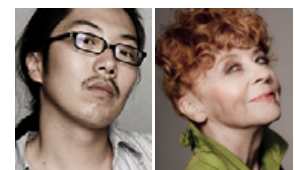
Zur Eröffnungsfeier gab es einen Sektempfang und Fotograf **Kim Sperling** war persönlich anwesend.



Foto: Kim Sperling



Foto: Herlinde Koelbl



K. Sperling

H. Koelbl

## „Hello and Good-bye“ 2012



Am Freitag, den 19. Oktober 2012 lud das IN-EAST zur Absolventenfeier der ostasienwissenschaftlichen Studiengänge ein. Den Absolventen wurde im festlichen Rahmen zum erfolgreichen Studienabschluss gratuliert und gleichzeitig wurden die neu immatrikulierten Studierenden willkommen geheißen: „*Hello und Good-bye*“.

Während des Einlasses und später zwischen den Programmpunkten wurden Teilnehmer und Besucher durch die musikalische Darbietung von **Petra Keßler** und ihrer Querflöte in z. T. ostasiatische Klangwelten geschickt (*Klassisches Programm – Musik für DiZi – Jade für Querflöte solo – Musik für DiZi*).



Nach der Eröffnung der Veranstaltung durch **Helmut Demes**, den Geschäftsführer des IN-EAST und gleichzeitig Ansprechpartner für die MA-Studiengänge, begrüßte **Prof. Flemming Christiansen** als Direktor des IN-EAST die Studierenden und das Publikum.

„*Hello*“ an die neuen Studierenden sagten **Prof. Axel Klein**, Ansprechpartner für den neuen Studiengang BA MOAS, und **Prof. Thomas Heberer** für die neuen MA-Studierenden.



BA-Studierende



MA-Studierende

Anschließend ging es zur Verleihung der Deutschlandstipendien durch **Prof. Werner Pascha** in Vertretung für den verhinderten **Claus Witte**, Vorsitzender der *Duisburger Universitätsgesellschaft* (D. U. G.), die 2 Deutschlandstipendien sponserte, und durch **Dirk Petzold**, Vorsitzender des Vereins *Alumni und Freunde der Duisburger Ostasienstudien e.V.* (AlFreDO), der für 1 Deutschlandstipendium eintrat.



Die Deutschlandstipendiaten Nina Konietzko



Genevieve Schermann



Thomas Schneider



„*Good-bye*“ – die Verabschiedung der erfolgreichen Absolvent(inn)en des Diplomstudienganges und des Masterstudienganges MA CEAS übernahm wieder **Prof. Flemming Christiansen**. Jedem Absolventen bzw. jeder Absolventin, alle in traditionellem Talar mit Schärpe und Doktorhut, wurde das Abschlusszeugnis überreicht.



Absolventen Diplom-Studiengang



Absolventen Master-Studiengang

Der Alumni-Verein AlFreDO verlieh auch 2012 wieder den AlFreDO-Studienpreis für die beste Abschlussarbeit. Der Vorsitzende **Dirk Petzold** überreichte den Preis an **Anouar Sebastian Azza** für seine Diplomarbeit *Strategische Handelspolitik als Schlüssel zum Aufbau einer Infant Industry: Analyse der protektionistischen Maßnahmen der Volksrepublik China zur Förderung chinesischer Hersteller von Personenkraftwagen*. Die Laudatio hielt sein Betreuer **Prof. Markus Taube** – weil er verhindert war, wurde die zuvor aufgezeichnete Rede auf die Leinwand projiziert.



Anouar Sebastian Azza



Abschlussrede Thomas Heberer

Stellvertretend für alle Absolvent(inn)en bedankte sich **Dipl.-Reg.-Wiss. Simon Bender** mit seiner Rede bei den Lehrenden und allen anderen des IN-EAST.

Am Ende leitete **Prof. Thomas Heberer** mit seiner Abschlussrede zum Sektempfang über, mit dem die Veranstaltung ausklang.

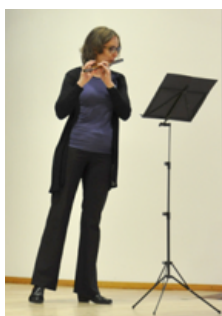
Wir gratulieren unseren Absolventen und wünschen Ihnen allen viel Erfolg für Ihren beruflichen Werdegang!

### “Hello and Good-bye” 2013



The annual ceremony “Hello and Good-bye” has become an IN-EAST tradition. On October 16, 2013, professors and the management welcomed this year’s freshmen, including new MA students and international exchange students. During this occasion, graduating students got to celebrate together with friends, family as well as their professors and mentors.

Flutist **Petra Keßler** performed classical music for the arriving audience. **Prof. Flemming Christiansen**, Director of the IN-EAST, opened the event by emphasizing the different backgrounds of the IN-EAST students and pointing out the institute’s diversity.



**Sofie De Broe**, contact person for MA students, and **Prof. Dr. Axel Klein**, contact person for BA students, welcomed this year's newcomers.



BA students with Prof. Axel Klein



MA students with Sofie De Broe

The ceremony offered new students the unique opportunity to find inspiration in the experience of former students. Graduate **Yulia Aristova** especially addressed the new students in her speech and shared some personal insights from her time studying at the IN-EAST. “You are not going to study East Asia – you are going to experience East Asia”, she explained to the freshmen.

Three students received Deutschland Scholarships, presented by **Claus Robert Witte**, Chair of the Managing Board *Duisburger Universitäts-Gesellschaft (D. U. G.)*, and **Dirk Petzold**, Chair of the Managing Board *Alumini und Freunde der Duisburger Ostasiestudien e.V. (AlFreDO)*. Since one student was not able to come to Germany to attend the ceremony, the award was presented via Skype.



Presentation Deutschland Scholarship via Skype



Presentation Deutschland Scholarships, Prof. Werner Pascha, Claus Witte, Chair D. U. G., Dirk Petzold, Chair AlFreDO e.V.

**Philipp Mark** was awarded with the AlFreDO Award for the best master thesis on *Japan's 'Integrated Social Security and Tax Reform' from the Perspective of the Political Economy of Policy Reform*. In his laudation, **Prof. Werner Pascha** pointed out three important steps for IN-EAST studies that **Philipp Mark** had followed exemplary in his work. According to **Prof. Werner Pascha** the first step is to accumulate information about East Asia, the second step is to ask interesting questions and try out existing theories. The last important step is to use sophisticated empirical methodologies, which are at least close to the state-of-the-art in the disciplinary approaches like economics or sociology.



Presentation AlFreDO Scholarship



Graduates dressed in academic gown with Director Prof. Flemming Christiansen and Managing Director Helmut Demes

Finally **Prof. Flemming Christiansen** presented the degrees to the graduates who were dressed in robes and caps with which they had been provided upon their arrival.

We congratulate all of our graduates. We are proud of them and wish them all the best for their future careers!

## 1

**BOARD AND ADVISORY COUNCIL**  
**INSTITUTSVORSTAND UND BEIRAT**
**Board Vorstand**


---

**Prof. Flemming Christiansen, Ph.D.** Director *Direktor*

**Prof. Dr. Markus Taube** Deputy Director *Stellvertretender Direktor*

**Prof. Dr. Werner Pascha**

**Prof. Dr. Thomas Heberer**

**Prof. Dr. Axel Klein**

**Prof. Karen Shire, Ph.D.**

**Prof. Kristin Surak, Ph.D.**

**Dipl.-Kuwi Martin Heinberg**

**Ute Heinrichs** Student Member *Studentisches Mitglied*

**Advisory Council Beirat**


---

**Chairperson Sprecher**

**Prof. Dr. Eckhard Rohkamm**

CEO (retired), ThyssenKrupp Technologies; Deputy Chair, German Asia-Pacific Business Association  
*Vorstandsvorsitzender a.D. ThyssenKrupp Technologies; Stellvertr. Vorsitzender Ostasiatischer Verein*

**Members Mitglieder**

**Dr. Gerhard Eschenbaum**

Deputy Executive Director, Head of International Business Division Chamber of Commerce and Industries, Düsseldorf *Stellvertretender Hauptgeschäftsführer, Leiter der Außenhandelsabteilung Industrie- und Handelskammer Düsseldorf*

**Dr. Florian Hesse**

CEO *Geschäftsführer* Carl Fuhr GmbH & Co. KG

**Dr. Patrick Köllner**

Director *Direktor* Institute of Asian Studies, GIGA, Hamburg

**Matthias Naß**

DIE ZEIT, Hamburg

**Dirk Petzold, Dipl.-Reg.-Wiss.**

Chairman of the Association of Alumni and Friends of East Asian Studies in Duisburg  
*Vorsitzender der Alumni und Freunde der Duisburger Ostasienstudien e. V.*

**Johannes Pflug**

Member of Parliament (SPD) *Mitglied des Deutschen Bundestages (SPD)*

**Dr. Dr. h.c. Ruprecht Vondran**

Honorary Chairman, German-Japanese Economic Association, Düsseldorf  
*Ehrenvorsitzender Deutsch-Japanischer Wirtschaftskreis, DJW*

## 2

STAFF  
MITARBEITER**Social Sciences of East Asia – Political Sociology of China (Faculty of Social Sciences)**  
*Sozialwissenschaftliche Ostasienstudien – Politische Soziologie Chinas*  
*(Fakultät Gesellschaftswissenschaften)*

Professor **Flemming Christiansen, Ph.D.**  
 Research Associate **Dr. Helmut Schneider** (Human Geography/Regional Geography of East and Southeast Asia *Kulturgeographie/Regionale Geographie Ost- und Südasiens*)  
**Oliver Simon, Ass. jur.**  
 Office **Petra Klöckner**



F. Christiansen H. Schneider O. Simon P. Klöckner

**Politics – East Asia (Faculty of Social Sciences)**  
*Politik Ostasiens (Fakultät Gesellschaftswissenschaften)*

Professors **N. N.**  
**Dr. Thomas Heberer** (until Feb. 2013, retired, since Mar. 2013 Senior Professor)  
 Research Associates **Magnus Dau, M.A.** (until June 2013)  
**Dr. Lun Du** (until Feb. 2013)  
**Susanne Löhr, M.A.** (BMBF funded)  
**Dr. Kerstin Lukner** (until March 2013)  
**Dr. Anja D. Senz** (Managing Director, Confucius Institute Metropolis Ruhr)  
**René Trappel, Dipl.-Reg.-Wiss.** (BMBF funded)  
 Office **Cornelia Feldmann**  
**Patrick Prädikow**



Th. Heberer M. Dau L. Du S. Löhr K. Lukner A.D. Senz R. Trappel C. Feldmann

**Comparative Sociology and Japanese Society (Faculty of Social Sciences)**  
*Gesellschaftsvergleich und Gesellschaft Japans (Fakultät Gesellschaftswissenschaften)*

Professor **Karen A. Shire, Ph.D.**  
 Research Associates **Dr. Birgit Apitzsch** (Institute of Sociology)  
**Stefan Derpmann, Dipl.-Soz.-Wiss.** (Institute of Sociology)  
**Vitali Heidt, M.A.** (DFG GK 1613 Doctoral Fellow)  
**Steffen Heinrich, M.A.** (IN-EAST, DFG GK 1613 Post-doc, project leadership)  
**Hanno Jentzsch, M.A.** (DFG GK 1613 Post-doc, project leadership)  
**Hannelore Mottweiler, Dipl.-Soz.-Wiss.** (BMBF funded, Institute of Sociology)  
**Markus Tünte, Dipl.-Soz.-Wiss.** (Inst. of Sociology, BMBF project leadership)

Office

**Melanie Wacker, M.A.** (DFG project)  
**Chih-Chieh Wang, M.A.** (DFG GK 1613 Doctoral Fellow)  
**Bärbel Wagner**  
**Dirk Breman** (June–July 2013)



K. Shire

B. Apitzsch

St. Derpmann

V. Heidt

St. Heinrich

H. Jentzsch

H. Mottweiler

M. Tünte

M. Wacker

Ch.-Ch. Wang

**Comparative Sociology (Faculty of Social Sciences)**  
**Gesellschaftsvergleich (Fakultät Gesellschaftswissenschaften)**

Professor

**Kristin Surak, Ph.D., Jun.Prof.** (DFG funded, IN-EAST)

Office

**Bärbel Wagner**

K. Surak

**East Asian Economic Studies (Mercator School of Management;  
 Faculty of Business Administration)**  
**Wirtschaftswissenschaftliche Ostasienstudien (Mercator School of Management;  
 Fakultät Betriebswirtschaftslehre)**

Professors

**N. N.**

Office

**Kornelia Apholz**

**East Asian Economic Studies – China (Mercator School of Management;  
 Faculty of Business Administration)**  
**Ostasienwirtschaft – China (Mercator School of Management;  
 Fakultät Betriebswirtschaftslehre)**

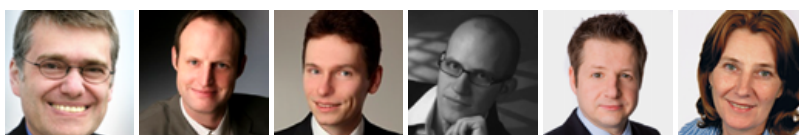
Professor

**Dr. Markus Taube**

Research Associates

**Marcus Conlé, Dipl.-Reg.-Wiss.**  
**Peter Thomas in der Heiden, Dipl.-Reg.-Wiss.**  
**Martin Heinberg, Dipl.-Kuwi**  
**Jörg Mathäus, Dipl.-Ök.**

Office

**Andrea Werry**

M. Taube

M. Conlé

P. in der Heiden

M. Heinberg

J. Mathäus

A. Werry



**East Asian Economic Studies – Japan and Korea**  
**(Mercator School of Management; Faculty of Business Administration)**  
*Ostasienwirtschaft – Japan und Korea (Fakultät Betriebswirtschaftslehre)*

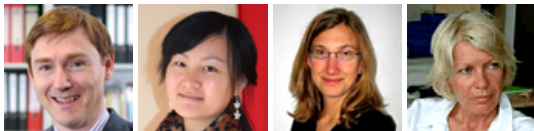
Professor	<b>Dr. Werner Pascha</b>
Research Associates	<b>Sunkung Choi, M. A.</b> (since Aug. 2013) <b>David Eichhorn, M. A.</b> <b>Dr. Sven Horak</b> (until Aug. 2013) <b>Stephanie Krebs, Dipl.-Reg.-Wiss.</b> <b>Taske Ueda, Dipl.-Reg.-Wiss.</b> (since Oct. 2012) <b>Henning Windhagen, M. A.</b>
Junior Fellow	<b>Tobias Hentze</b>
Honorary Professor	<b>Dr. Peter Baron</b>
Office	<b>Melanie Miller</b> (until May 2013) <b>Annemarie Tappert, M. A.</b> (since June 2013)



W. Pascha S. Choi D. Eichhorn S. Horak St. Krebs T. Ueda H. Windhagen M. Miller A. Tappert

**Japanese Politics / East Asian Studies (Faculty of Social Sciences)**  
*Politik Japans / Sozialwissenschaftliche Ostasienstudien (Fakultät Gesellschaftswissenschaften)*

Professor	<b>Dr. Axel Klein</b>
Project Assistant	<b>Weijing Le, B.A.</b> (since Nov. 2012, DAAD funded)
Research Assistant	<b>Dr. Kerstin Lukner</b> (since April 2013, temporarily)
Office	<b>Ursula Fischer</b> (until March 2013) <b>Cornelia Feldmann</b> (since April 2013)



A. Klein W. Le K. Lukner C. Feldmann

**Japanese Language (attached to Japanese Politics / East Asian Studies;  
Faculty of Social Sciences)**

*Japanische Sprache (zugeordnet zu Politik Japans / Sozialwissenschaftliche Ostasienstudien; Fakultät Gesellschaftswissenschaften)*

Language Instructors	<b>Rafael Beermann, M.A.</b> (Supervisor) <b>Yuka Ando, M.A.</b>
Part-time Lecturer	<b>Rie te Kamp</b> <b>Kinue Sugita, M.A.</b>



R. Beermann Y. Ando R. te Kamp K. Sugita

## Chinese Language (attached to Japanese Politics / East Asian Studies; Faculty of Social Sciences)

*Chinesische Sprache (zugeordnet zu Politik Japans / Sozialwissenschaftliche Ostasienstudien; Fakultät Gesellschaftswissenschaften)*

Language Instructor **Dr. Lun Du**

Part-time Lecturer **Xuepan Wang**



L. Du

X. Wang

Part-time Lecturer of the Confucius Institute Metropolis Ruhr, Duisburg:

**Yongxing Kang**

**Yin Liu**

**Wenting Sheng**

## Research Training Group 1613 Risk and East Asia

*Graduierten-Kolleg 1613 Risk and East Asia*

Spreaker **Prof. Dr. Karen Shire**

Coordinator **Uta Golze, M. A.**

Office **Bärbel Wagner**

Post-docs **Yuan Li, Ph.D.** (until Feb. 2013)

**Armin Müller, M. A.**

**Melanie Wacker, M. A.**

**Chih-Chieh Wang, M. A.**

**Sunkung Choi, M. A.** (affiliated)

**René Trappel, Dipl.-Reg.-Wiss.** (affiliated)



Y. Li

A. Müller

M. Wacker

Ch.-Ch. Wang

S. Choi

R. Trappel

Doctoral Fellows

Cohort 2010:

**Stephanie Bräuer, M. A.**

**Iva Ognjanovic, M. A.**

**Ann-Katrin Prior, Dipl.-Reg.-Wiss.**

**Hans-Christian Schnack, M. A.**

**Magnus Dau, M. A.** (affiliated)

**Susanne Löhr, M. A.** (affiliated)



St. Bräuer

I. Ognjanovic

A.-K. Prior

Chr. Schnack

M. Dau

S. Löhr

Cohort 2011:

**Kai Duttler, M. Sc.**

**Vitali Heidt, Dipl.-Reg.-Wiss.**

**Hanno Jentsch, M. A.**  
**Alison Lamont, M. A.**  
**Stenya Melnikova, M. A.**  
**Anna Shpakovskaya, M. A.**  
**Dung Vu, M. A.**  
**Mei Yu, M. A.**  
**Martin Heinberg, Dipl.-Reg.-Wiss. (affiliated)**  
**Ting Huang, LL. M. (affiliated)**



K. Duttler V. Heidt H. Jentsch A. Lamont St. Melnikova A. Shpakovskaya D. Vu M. Yu M. Heinberg T. Huang

**IN-EAST School of Advanced Studies of the University of Duisburg-Essen**  
*IN-EAST School of Advanced Studies an der Universität Duisburg-Essen*

Director **Prof. Dr. Markus Taube**  
 Coordinator **Iris Glockner, M. A. (since Mar. 2013)**  
 Office **Birgit Geith, Dipl.-Kffr. (since Sept. 2013)**  
 Post-docs **Shuanping Dai, Ph. D. (since Nov. 2013)**  
**Dr. Felix Ebeling (May–Sept. 2013)**  
**Dr. Momoyo Hüstebeck (since Sept. 2013)**  
**Lewis Husain, Ph. D. (since Oct. 2013)**  
**Dr. Beate Löffler, Dipl.-Ing. (FH) (since Sept. 2013)**



M. Taube I. Glockner B. Geith Sh. Dai M. Hüstebeck L. Husain B. Löffler

**Management / Service Staff IN-EAST / IN-EAST School of Advanced Studies /  
 Research Training Group 1613 Risk and East Asia**  
*Management / Service-Mitarbeiter IN-EAST / IN-EAST School of Advanced Studies /  
 Graduierten-Kolleg 1613 Risk and East Asia*

Executive Director **Helmut Demes, Dipl.-Volksw.**  
 Coordination Unit **Claudia Hausmann, M. A.**  
 Event Management **Helena Brodsky, M. A. (since Sept. 2013)**  
 MA Programs Coordinator **Sofie De Broe, Ph. D. (since June 2013)**  
 Public Relations **Sarah Fehrs, M. A. (since Oct. 2013)**  
 Cartography **Harald Krähe, Dipl.-Ing. (FH)**  
 IT Consultant **Julian Kut (since Sept. 2013)**  
 Librarian **Toshi Yamada, M. A., Dipl.-Wiss.-Bibl.**



H. Demes C. Hausmann H. Brodsky S. De Broe S. Fehrs H. Krähe T. Yamada

## Senior Professors and Emeriti

### *Senior-Professoren und Professoren im Ruhestand*

Senior Professor      **Dr. Thomas Heberer** (Politics and Society of China  
*Politik und Gesellschaft Chinas*)

Emeritus                **Dr. Winfried Flüchter** (Human Geography/Regional Geography of East and  
Southeast Asia    *Kulturgeographie/Regionale Geographie Ost- und Südasiens*)



Th. Heberer    W. Flüchter

## Staff News *Personalnachrichten*

**Thomas Heberer** has been appointed Member of the Editorial Committee of the annual yearbook “Ethnic Minorities: Annual Social and Economic Indicators” (Routledge).

**Thomas Heberer** has been appointed Senior Professor of Politics and Society of China (April 2013).

**Momoyo Hüstebeck** has got a publication grant from JaDe-Stiftung (Japanese-German Society for Cultural Relations).

**Werner Pascha** was a member of selection and promotion committees at Aarhus University, at Ca’Foscari University, Venice, and at the Illinois Institute of Technology, Chicago.

**Werner Pascha** was elected Chairman of the Board of JaDe, the Foundation for Japanese-German Cultural Relations (<http://www.jadestiftung.org/>). The predecessor of the current Foundation was founded in 1974 with a significant endowment from the Japanese government. The Foundation supports various projects in academia and cultural relations.

**Kristin Surak** is on leave to the School of African and Oriental Studies, London, for one year from Sept. 2013 to Aug. 2014.

## Visiting Scholars *Gastwissenschaftler*

**Prof. Dr. Keping Yu**, China Center of Comparative Politics and Economics, Beijing, Qinghua University and Beijing University (Sept. 30–Oct. 30, 2012)

**Prof. Dr. Xu Xiuli**, Chinese Academy of Social Sciences, Sept. 30–Oct. 30, 2012, BMBF funded

**Prof. Ellis Krauss, Ph.D.**, University of California San Diego, School of International Relations and Pacific Studies, Oct.–Nov. 2012

**Prof. Yoshihisa Godo, Ph.D.**, Meiji Gakuin University, Tokyo, Oct. 23–Nov. 4, 2012, DFG funded

**Prof. Dr. Zhao Shukai**, Development Center of the State Council, Nov. 15–Dec. 15, 2012, BMBF funded

**Prof. Dr. Xueli Sui**, Political Scientist, Beihang University (Beijing University of Aeronautics & Astronautics). Grant of the Chinese Ministry of Education (Feb. 2012–Jan. 2013)

**Yanjun Guo**, Renmin University, Beijing, School of Sociology, funded by DFG Graduate School (Sept. 2012–Mar. 2013)

**Dr. Rie Takamatsu**, Doshisha University Kyōto, Life Risk Research Center (March 2013)

**Dr. Katsuhiko Yonezaki**, Doshisha University Kyōto, Life Risk Research Center (Apr. 2013–Feb. 2014)

---

**Prof. Dr. Ding Kaijie**, China Center of Comparative Politics and Economics, May–June 2013, DFG funded

**Prof. Dr. He Zengke**, China Center of Comparative Politics and Economics, May–June 2013, DFG funded

**Prof. Dr. Lowell Dittmer**, Institute of East Asian Studies, University of California, Berkeley, May–June 2013, funded by DFG Graduate School

**Prof. Dr. Stevan Harrell**, Institute of Social Anthropology, University of Washington, Seattle, funded by Confucius Institute Ruhr Metropolis, June 2013

**Prof. Robert Pekkanen**, University of Washington, Seattle, Henry M. Jackson School of International Studies, June–July 2013, DFG funded

**Prof. Saadia M. Pekkanen**, University of Washington, Seattle, Henry M. Jackson School of International Studies, June–July 2013, DFG funded

## 3

RESEARCH ACTIVITIES  
FORSCHUNGSAKTIVITÄTEN**Flemming Christiansen****China's Urbanisation Processes and the Emergence of New Political and Social Structures in China.**

## Current research

Explorations of how new-style communities (*shequ*, i.e. local-level residential areas of public-policy provisioning) emerge in a medium-sized city in central China. The empirical research examines, in the first instance, how communities cater for the social transitions of peri-urban rural people relocated into urban settings and also seeks to capture the broad variety of interests, purposes and administrative logics that determine their structure and path of development. This research topic is driven by an interest in explaining how social developments in China reflect coherent systemic logics.

Broader research interests include the Chinese in the global economy, whereby the ethnic Chinese workers overseas are regarded as part of the same „supply chains“ as migrant workers in China. This research seeks to understand how forms of social and ethnic exclusion are framed in different contexts, reflecting pressures from the global economy.

**Winfried Flüchter****Geo-Risk-Space and Risk Society Japan: The Eastern Japan Great Earthquake Disaster 2011 and the Options of a Risk Society**

## Current project

Hazard research has concentrated too much on the analysis of so-called natural disasters, on the understanding of nature and the dangers resulting from this, and too little on man-made hazards, which people themselves initiate by weighing risks and trying to defuse these through hazard management. The Geo-Risk-Space and the Risk Society Japan serve as an excellent case for addressing the shortcomings of much natural hazard research by alternatively pointing to how humans attempt to bring nature under their control, with the belief that the more developed the technology, the better our control. The effect, however, is heightened vulnerability. As the Eastern Japan Great Earthquake Disaster (*Higashi Nihon Daishinsai*) of 2011 exemplifies, this can lead to a disastrous chain reaction, to a three-fold catastrophe – earthquake, tsunami and nuclear crisis. The research project analyzes Japan's seismic warning system, disaster prevention and emergency measures. Emphasis is put on the options of a risk society, how to deal with the problem of *Restrisiko* by making use of a flexible conflict economy. The man-made nuclear accident at Fukushima is seen as a focus of systemic weakness – and gives reason to the question if it serves as a catalyst of institutional change.

**Winfried Flüchter****Public Housing and Urban Development in Singapore – Ethnic Groups Between Residential Segregation and Residential Integration*****Öffentlicher Wohnungsbau und Stadtentwicklung in Singapur: Ethnien zwischen residenzieller Segregation und Integration***

Funded by DFG (German Research Foundation) 2001–2004, current project

Public housing is regarded as one of the “pillars of the nation” when it comes to the integration of Singapore's multi-ethnic population. By means of a well-contrived system for providing for their old age, almost 90 % of the inhabitants have become quasi-owners. The research project focuses at the

micro-level on the degree of equilibrium and particularly the acceptance of the mixture of social and ethnic population that is consciously favoured by Singapore's government. Of late it has frequently been questioned, not only in Singapore, whether under certain conditions segregation would not be a (better?) alternative. With this question in mind we will evaluate Singapore's strategy ("social and spatial engineering"). The discussion of the advantages and disadvantages of a balanced mixture and of segregation at the micro-level needs to be related to the macro-level. For the self-image of the "developmental state" of Singapore, public housing is of crucial importance as a sign of "nation building". The links between priorities at the macro-level and modes of behaviour at the micro-level will be analysed. This project in the field of urban and political geography is based on a critical/hermeneutical concept of science and will apply approaches from decision and behavioural theory, with particular attention to the ethnic-cultural approach. Research fellow in the project is **Will Hammelrath**.

### **Thomas Heberer (with Prof. Dr. Gunter Schubert, University of Tübingen)**

#### **Politics and Autonomy in the Local State – County and Township Cadres as Strategic Actors in the Chinese Reform Process**

Funded by the German Research Foundation (DFG), extended until 12/2014

Any substantial assessment of China's state capacity cannot be undertaken without a careful analysis of the local state. County and township cadres are of utmost importance here – a fact which has rarely been researched so far. They have a high degree of autonomy vis-à-vis the central state and are the decisive actors concerning the implementation of China's agricultural policies and the government's efforts to reform the system of rural finance. It is the local cadres who decide about the central state's success to maintain social stability and regime loyalty among China's peasants. What kind of rationality do local cadres follow when they carry out central policies? To what extent do they develop a collective identity that makes them a self-conscious strategic group in China's political system, and how does this impact on state capacity and regime legitimacy? The project intends to find answers to this question by a systematic analysis of the implementation of the "Construction of a new countryside" comparing different counties and townships. By that, it makes an important contribution to the understanding of political development in contemporary China.

### **Thomas Heberer and Gunter Schubert (University of Tübingen)**

#### **Local Governance in China: Local Cadres as Strategic Groups, Policy Innovation and Policy Experimenting**

Funded by the Federal Ministry of Education and Research (BMBF), 2010–2016 (extended due to its outstanding contributions to political science studies on China)

This project is part of the Competence Network "Governance in China: Prerequisites, Constraints and Potentials for Political Adaptation and Innovation Capacity in the 21st Century", in cooperation with **Prof. B. Alpermann** (Würzburg), **Prof. S. Heilmann** (Trier) and **Prof. H. Holbig** (Hamburg).

The increase in influence of non-democratic political systems, especially of the Peoples Republic of China, poses a central challenge to politics, political consulting and scientific research. The capability of authoritarian regimes for adaptation and innovation has only sporadically been examined by the social sciences so far.

The Research Network 'Governance in China' aims at researching prerequisites, achievements and constraints of the adaptive and innovative capacity of institutions, processes and policies as part of the governance in China. For this aim it uses an innovative set of networks and connections to other social and regional studies.

This research program is on the one hand based on completed studies of the network participants at the Universities of Duisburg-Essen, Trier, Tübingen, Würzburg and the German Institute of Global and Area Studies (GIGA) in Hamburg and also affiliates current projects. On the other hand new sub-projects are added which will deepen knowledge regarding specific issues within the overarching topic 'Governance

in China'. The Research Network profits from its manifold international contacts. This research co-operation of China studies and political science in Germany builds on existing structures like the Association for Social Science Research on China (ASC) of the German Association for Asian Studies. Key features of the concept are: training of doctoral and post-doc students, organization and participation of international conferences and workshops, participation in field research especially of young scholars, and invitation of guest researchers. This should promote the goal of making German research on China more visible internationally.

The subproject conducted by Gunter Schubert and Thomas Heberer follows a comparative research project conducted by Thomas Heberer and Gunter Schubert since 2008. The focus of this project has been the role of county and township cadres in "Building a New Socialist Countryside" (a government program that promotes comprehensive local development). The subproject aims at a successive deepening of knowledge on local political processes in rural China by means of comparative research over a prolonged stretch of time. Research fellows in the project are **Susanne Löhr** and **René Trappel**.

The project inquires into political deliberation and strategic action of leading county and township cadres in China by means of empirical policy research (particularly rural development policies, policy innovation, policy learning and policy experimenting).

County and township cadres are of utmost importance in the Chinese transformation process – a fact which has rarely been researched so far. It is the local cadres who decide about the central state's success to maintain social stability and regime loyalty among China's peasants. What kind of rationality do local cadres follow when they carry out central policies? What are their concrete strategies and why do they choose exactly these? Do they act in coordination? And which (measurable) impact does their action have on state capacity and regime legitimacy in rural China? By systematically comparing local policy implementation, policy innovation and policy experimenting in different counties and townships the subproject aims at answering these questions. Furthermore, it intends to contribute to an understanding of the political development in contemporary China, particularly with regard to the adaptability of the political system facing new social challenges. Policy innovations and policy learning by local leading cadres play a prominent role here. Field research by Thomas Heberer within this project was conducted in Jiangyin county (Jiangsu) and Shiquan county (Shaanxi) in 2011. In 2012 and 2013 Thomas Heberer and Gunter Schubert conducted joint field research on the interaction between local private entrepreneurs and local governments in Jiangyin county (Fujian), Enshi county (Hubei) and Wenzhou (Zhejiang).

## **Werner Pascha**

### **Japanese Coal Miners in the Ruhr Industrial District**

Supported by: Involved institutes and Deutsch-Japanische Gesellschaft (DJG) during the initial phase, 2010–2013, NRW Ministry of Science, JaDe Japanese-German Society for Cultural Relations

From 1957 to 1965, some 436 miners from Japan worked in the Ruhr area in coal mining under a bilateral governmental agreement. After the end of the program, some of them stayed in Germany and started a family. While the role of Japanese businessmen in the enterprises of Düsseldorf is quite well known, this episode involving more "ordinary" individuals and encounters between Japanese and German citizens is very little known. To prepare for the 2011 celebrations of 150 years of German-Japanese trade relations, a conference was organized at Zeche Zollverein in Essen, under the auspices of the NRW Ministry for Science. In 2013, a book has been prepared containing interviews with Japanese miners (see Publications, chapter 8).

Werner Pascha jointly with **Prof. Shingo Shimada** (University of Düsseldorf), **Prof. Regine Mathias** (University of Bochum) and the German-Japanese Society (DJG) of the Lower Rhine (**Atsushi Kataoka**, **Pia Meid**)



## **Werner Pascha (with Bernhard Seliger)**

### **Supporting Modern Korean Studies through the Strategic Initiative for Korean Studies**

Funded by the Academy of Korean Studies, 2008–2013

A small series of workshops and books are planned to promote contemporary Korean studies and in particular to strengthen the European voice. A first one-day conference was held: “Towards a Northeast Asian Security Community: Implications for Korea’s Growth and Economic Development” at the Korea Economic Institute, Washington, D.C., October 15, 2008, co-organized by the Seoul office of the Hanns Seidel Foundation. A first book on Northeast Asian Security Cooperation, published by Springer New York, has appeared in 2011, a second book, jointly edited by **Jörg Mahlich** and **Werner Pascha** in 2012, on Korean innovation in an international perspective. In 2013, a final book by Bernd Seliger (*The Shrimp that Became a Tiger. Transformation Theory and Korea’s Rise After the Asian Crisis*. Frankfurt: PL Academic Research, 2013) has been published, finalizing the project.

## **Werner Pascha**

### **Current Issues of the Political Economies of Japan and Korea: Comparative Research**

Funded by the Bertelsmann Foundation, 2009–2013

Werner Pascha is contributing to projects of the Bertelsmann Foundation that promise stringent comparisons between various countries, based on a rigorous and detailed analytical framework. As for Japan, the framework is given by the “Sustainable Governance Indicators” project. It analyzes and compares the need for reform in OECD member countries, as well as their ability to respond to current social and political challenges. The project is designed to create a comprehensive data pool on government related activities in the world’s developed, free-market democracies. With respect to South Korea, the framework is the “Comparative Crisis Management” project of Bertelsmann Foundation which intends to evaluate the capacities and abilities of the political management in selected developing and transition countries in response to the global financial and economic crisis. Reports have been published in 2010, 2011 and 2012, a new report prepared in 2013.

## **Werner Pascha**

### **E-mobility**

Commissioned by the European Commission

The Chair for the “East Asian Economy/Japan and Korea” participates in a comparative study of electric vehicles. The Chair will investigate and assess the current market situation for electric vehicles in Japan and South Korea. In this context it will describe and assess the industrial situation, including components like batteries, look at new services emerging and at the role of public authorities. This project is part of a Multiple Framework Contract for the provision of consultancy services in the field of the Automotive Sector, awarded to the University of Duisburg-Essen (Centre for Automobile Management, Prof. Heike Proff) by the DG Enterprise and Industry of the European Commission. The final report was finished in 2013 and accepted by the EU Commission.

## **Werner Pascha**

### **EU–Republic of Korea Public Diplomacy Project**

Financed by: European Commission, 2011–2013

Under the leadership of EKI (EU-Korea Institute of the Free University of Brussels), a consortium of European partners hopes to bring many added-values to the EU’s public diplomacy efforts towards strengthening its relations with Korea (ROK) through research and public activities. To help the EU achieve a well-functioning EU-Korea relationship, the project will highlight the importance of EU-Korea relations and its policy co-operation at international and global levels, raise the profile and in-

fluence of the EU on the Korean peninsula and in East Asia, and increase the visibility of Korea in the EU as a strategic, beneficial partner for European economic and social prosperity. Apart from EKI, the consortium consists of Asia Centre, Sciences Po, Paris; BusinessEurope, Brussels; German Institute for Global Affairs (GIGA), Hamburg; Korea University, Seoul; University of Duisburg-Essen; Yonsei University, Seoul. **Werner Pascha** is in charge of the work package on trade and investment. Workshops were held in Seoul (late 2012) and in Brussels (spring 2013).

## **Helmut Schneider**

### **Environmental Conflicts in Southeast Asia**

Current research

In this research environmental conflicts are defined as conflicts in which environment or single natural elements (e.g. water, land) play a crucial role. That does not necessarily mean, that such conflicts are also caused by e.g. environmental degradation (although sometimes this might be the case). It is assumed that environmental conflicts, as conflicts in general, can only be understood and solved, when their (social, cultural, economic and political) context is considered properly. A basic hypothesis is that environment and natural elements, as a rule, are functioning as threat multipliers rather than single causes of conflicts. And they do so in very different ways. Due to the already noticeable, more so the predicted effects of climate change and a growing interest of financial investors for natural resources it is assumed, that environmental conflicts in Southeast Asia will increase in the future in terms of numbers as well as degree.

## **Helmut Schneider**

### **Spatial Aspects of Vietnamese-Chinese Links and Relations in Past and Present**

Current research

Vietnam and China have a long history of political, socioeconomic and cultural influence and interference as well as competition. This is true until the present day. Space is a medium through which these relations work (e.g. borders, frontiers, transborder cultural spaces, territorial claims). And those relations also have a spatial impact. The research aims at clarifying the role of space in Sino-Vietnamese relations in past and present.

## **Karen Shire**

Coordination, BMBF, 2009–2013

### **Flexmedia – Solutions for Improving the Innovative Capacity of Firms in the Publishing and Media Industries**

#### ***Integrierte Steuerungsinstrumente zur Steigerung der Innovationsfähigkeit von Unternehmen der Verlags- und Medienwirtschaft***

Förderprogramm „Arbeiten – Lernen – Kompetenzen entwickeln. Innovationsfähigkeit in einer modernen Arbeitswelt“, Themenfeld „Balance von Flexibilität und Stabilität in einer sich wandelnden Arbeitswelt“

This project began in July 2009 and research activities included a study of employment and outsourcing practices in the media and publishing industry. In 2010 a representative enterprise survey of employment practices in the industry was completed, and in 2011 four in-depth case studies of companies publishing newspapers and books. Activities in 2012 focused on analysis and dissemination of results in the form of research workshops and publications. In 2013 the project concluded with a final research report: **Joachim Hafkesbrink** and **Karen Shire** (eds.): *Flexibilität und Stabilität in der Verlags- und Medienbranche*. Lohmar: Josef Eul Verlag, 2013. Further information at the project website: [www.flexmedia-projekt.de](http://www.flexmedia-projekt.de).

## **Karen Shire**

Speaker, DFG Research Training Group 1613 (2009–2014)

### **Risk and East Asia: An Anglo-German Research Training Program in Discipline-based East Asian Area Studies**

IN-EAST was awarded funding by the DFG to set up the Research Training Group, officially commencing in October 2009. The research intentions of the program are three-fold: (1) to contribute to social scientific and comparative theories of institutional change by studying how the responsibilities for governing and protecting against social, political and economic risks are shifting from states to markets, public to private bodies and from collectivities to individuals, (2) to study institutional change in a region of the world – East Asia – where institutional logics have played out historically in different ways, and (3) to integrate strong research methodological training with research and language competencies in East Asian research contexts. The innovation of the research program lies in taking a risk perspective on institutional change, tying together specific disciplinary with a regional studies perspective, in an intra- and inter-regional research design. The sub-themes of the research program examine the impact of four “large processes” of contemporary transformations on shifting risks in specific cases of institutional dynamics: marketization, individualisation, decentralisation, and transnationalization. The research training program is an explicitly international collaboration with the UK Center of Excellence – the White Rose East Asian Centre – in cooperation with major centres of social scientific research in East Asia, the Faculty of Sociology and Population Studies at the Renmin University in Beijing, the Graduate Program in Global Studies at Sophia University, the Institute of Social Sciences and the Inter-faculty Initiative in Information Studies at the University of Tokyo in Japan. In 2013 Guest Professors **Lowell Dittmer** (UC Berkeley) and **Saadia Pekkanen** (University of Washington, Seattle) joined the Kolleg, the first four doctoral dissertations were successfully completed, doctoral students again attended the American Association of Asian Studies meetings and other important international conferences to present research results, and post-doctoral members advanced to Assistant Professorships in the US and the UK. In July 2013 the progress of the group was evaluated by a team of peer reviewers, and at the time of publication of this report, the DFG decision to extend the Kolleg for an additional 4.5 years is pending.

Participating social scientists from IN-EAST in 2012/2013 included **Prof. Karen Shire, Ph.D.**, Speaker, **Prof. Flemming Christiansen, Ph.D.**, Deputy Speaker, **Prof. Dr. Markus Taube**, Deputy Speaker, **Prof. i.R. Dr. Winfried Flüchter**, **Prof. Dr. Werner Pascha**, **Asst. Prof. Kristin Surak**, **Steffen Heinrich**, **Dr. des. Sven Horak**, **Dr. Kerstin Lukner**.

The specific activities of the Research Training Group are documented in chapter 4 of this report. Ongoing activities can be viewed at [www.risk-and-eastasia.de](http://www.risk-and-eastasia.de).

## **Karen Shire**

Principal Investigator, funded by the German Research Foundation (DFG) 2013–2015

### **Cross-Border Temporary Staffing. Market-Making and Transnational Regulation in Inter-Regional Comparison**

The research examines the creation of cross-border labor markets for temporary agency work. The focus is on the role of private labor market intermediaries and the emerging governance of cross-border temporary placements in two world regions – the European Union and East Asia. Theoretically the research draws together theories of transnational organizations and the economic sociology of market-making. Both perspectives foreground the role of actors and focus on the negotiated order of institution-building to regulate labor markets. The leading research questions concern how and why markets for temporary labor are taking on transnational dimensions, and whether these markets can and will be governed by transnational institutions. In order to generalize beyond the EU as the typical unit of reference for many transnationalization studies, the research design is inter-regionally comparative, building on the language-based regional competence of the research team in East Asian studies. Private firm organizations (transnational temporary staffing firms) and interest communities (employer and labor representatives)

form the units of analysis, while the interplay of national and (supranational) regional activities constitute the levels of analysis in the proposed research design.

The state of research on the transnationalization of temporary staffing indicates that in both Europe and East Asia the integration of transformation countries into regional economies has intensified the extension of agency placements across national borders: in East Asia, to and from China, and in Europe, from Hungary, the Czech Republic and especially Poland.

Project team members are **Steffen Heinrich, Hannelore Mottweiler, Chih-Chieh Wang** and **Melanie Wacker**. The research is part of the Institute of Sociology Joint Research Cluster on Cross-Border Labor Markets.

In 2013 activities centered on refining the research design and composing two articles covering theoretical directions, and first case studies of transnational placements in Europe. Results were presented at the European Sociological Association meetings in Turin, Italy in August 2013.

## **Kristin Surak**

### **Migration Industries and Democratic States in East Asia**

This multi-year project examines how states cooperate with private actors to organize migration flows and focuses democratic states in East Asia – Japan, South Korea, and Taiwan. Devolving traditional domains of state sovereignty to sub-state actors, these governments have created a set of competitive markets in which brokers, businesses, and labor migrants compete for a shortage of work permits. Businesses vie to keep a hold on the restricted number of work quotas, and brokers compete to manage the limited cases of matching foreigners with employers. The resulting system keeps a tight grip on foreigners who form the axis around which both markets turn. Such cooperation promises resource saving, efficiency gains, and blame avoidance, but at the potential cost of regulatory capture and lock-in effects that stymie reform.

## **Kristin Surak**

### **Law and the Advent of Multicultural Society**

This project, based at the Center for Comparative Immigration Studies at the University of California, San Diego, investigates global variations in family reunion policies. By comparing North American, European, East Asian, and Middle Eastern cases, we hope to account for this remarkably understudied yet central determinate of migrant settlement. Preliminary analysis suggests that bureaucratic cultures and state-society relationships are the most significant factors in determining policy forms.

## **Kristin Surak**

### **Migration Regimes: A Global Comparison of Guestworker Programs**

## **Markus Taube**

### **E-mobility**

Commissioned by the European Commission

The Chair for the “East Asian Economy/China” participates in a comparative study of electric vehicles. The Chair will investigate and assess the current market situation for electric vehicles in the PR China. In this context it will describe and assess the industrial situation, including components like batteries, look at new services emerging and at the role of public authorities. This project is part of a Multiple Framework Contract for the provision of consultancy services in the field of the Automotive Sector, awarded to the University of Duisburg-Essen (Centre for Automobile Management, **Prof. Heike Proff**) by the DG Enterprise and Industry of the European Commission. The final report was finished in 2013 and accepted by the EU Commission.

---

## **Henning Windhagen**

### **Distribution of Industries in Japan and Recommendations for Location Selection**

Supported by: EU-Japan Centre for Industrial Cooperation, April–Sept. 2013

Aim of this research project is to provide an overview about the distribution of industries in Japan based on the data of 3,000 Japanese listed companies that employ about 15 million people, which is equivalent to about one quarter of the total workforce in Japan. The data has been extracted from the Bloomberg Professional service and reflects the latest insights into the current status of the regional distribution of firms in Japan. This report's goal is to enable decision makers in companies, seeking the most advantageous location within Japan for setting up a subsidiary, to derive insights on the locational distribution of potential customers (B2B) or specialized subcontractors and to find the most advantageous location to benefit from this potential.

## 4

**DFG RESEARCH TRAINING GROUP RISK AND EAST ASIA**  
*DFG GRADUIERTEN-KOLLEG RISK AND EAST ASIA*


In the final year of its initial funding period, accomplishments in this year included the completion of four dissertations, visits by four renowned Guest Professors, a number of new publications by members and the advancements of young post-doctoral scholars to research and teaching positions in the U. S., Sweden and the UK. The sections below present the members, new and old, of the research training group, the course program, research and training activities and the progress of the 21 individual projects within the four sub-themes of the research program: marketization, individualization, decentralization and transnationalization. In 2013 all efforts focused on the progress report to the DFG and the development of a new research and revised training program for the next five years. At the time of publication of this report, the extension decision by the DFG is pending.

## People

The research training group grew to 21 doctoral fellows (15 with stipends, 6 affiliates) and five post-doctoral fellows in 2012/13. Three post-doctoral scholars began their work in the group in 2012/13. The research program is led by seven participating scientists: **Prof. Flemming Christiansen, Ph.D.** (Sociology/China), **Prof. Dr. Winfried Flüchter** (Geography/Japan), **Prof. Dr. Thomas Heberer** (Politics/China), **Prof. Dr. Werner Pascha** (Economics/Japan), **Prof. Karen Shire, Ph.D.**, Speaker (Sociology/Japan), **Prof. Kristin Surak, Ph.D.** (Sociology/Japan), **Prof. Dr. Markus Taube** (Economics/China), and conducted in cooperation with the White Rose East Asia Centre at the Universities of Leeds and Sheffield, Renmin University in Beijing and the University of Tokyo.

### Doctoral Fellows

Recruitment of doctoral fellows was completed in 2011/12, and the youngest cohort focused on their field research in China and Japan in 2012/2013.

All doctoral fellows: **Kai Duttler** (M.Sc. University of Constance), **Vitali Heidt** (Diplom University of Bonn), **Hanno Jentzsch** (MA University of Bochum), **Alison Lamont** (MA University of Leeds), **Stenya Melnikova** (MA University of Duisburg-Essen), **Anna Shpakovskaya** (MA Shanghai University), **Dung Vu** (MA University of Hawaii, Manoa), **Mei Yu** (MA Beijing Normal University), affiliates **Martin Heinberg** (Diplom University of Passau), **Ting Huang** (LLM Renmin University, Beijing).

Four doctoral fellows and two affiliates appointed in 2010 are currently completing their dissertation manuscripts: **Stephanie Bräuer** (MA University of Leipzig), **Iva Ognjanovic** (MA University of Duisburg-Essen), **Ann-Katrin Prior** (Diplom University of Tübingen), **Christian Schnack** (MA Berlin Free University); **Magnus Dau** (MA University of Marburg), **Susanne Löhr** (MA University of Marburg).

Three doctoral fellows and two affiliates appointed in 2009 completed their dissertations in 2013. All have moved on to post-doctoral and research positions in the GK 1613 and IN-EAST: **Armin Müller** (MA University of Tübingen), **Melanie Wacker** (MA University of Leiden), **Chih-Chieh Wang** (MA Taiwan National University, Taipei); **Sunkung Choi** (MA Busan University), **René Trappel** (Diplom University of Duisburg-Essen).

### Postdoctoral Scholars

Four post-doctoral appointments were made out of the group offering all fellows who submitted their theses a position at the IN-EAST: **Armin Müller** (PhD submitted Duisburg-Essen), **Chih-Chieh Wang** (PhD submitted Duisburg-Essen), **Sunkung Choi** (PhD submitted Duisburg-Essen), **René Trappel** (PhD submitted Duisburg-Essen), **Dr. Sven Horak** (PhD Duisburg-Essen), **Dr. Yuan Li** (PhD Milan), **Dr. Stef-**

**fen Heinrich** (PhD submitted Heidelberg), with **Dr. Kerstin Lukner** (PhD Bonn) finishing the second year of her post-doctoral appointment in 2013.



A. Müller    Ch.-Ch. Wang    S. Choi    R. Trappel    S. Horak    Y. Li    St. Heinrich    K. Lukner

**Dr. Sven Horak** accepted a tenure track Assistant Professorship of Management at the Peter J. Tobin College of Business at the St John's University, New York, and began his new post in September 2013.

**Dr. Yuan Li** has been appointed tenure track Assistant Professor at the Stockholm China Economic Research Institute at the Stockholm School of Economics.

**Armin Müller** has been a member of the first cohort accepted to the DFG GK 1613 and submitted his thesis in May 2013 staying with the GK as post-doctoral fellow.

**Sunkung Choi** has been affiliated member to the first cohort accepted to the DFG GK 1613 and is now post-doctoral fellow of the group.

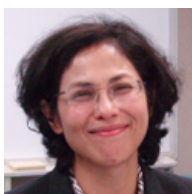
**René Trappel** has been affiliated member to the first cohort accepted to the DFG GK 1613 and is now affiliated post-doctoral fellow working at the BMBF funded research network "Governance in China".

**Chih-Chieh Wang** is now post-doctoral researcher at the DFG funded research project "Cross-Border Temporary Staffing. Market-Making and Transnational Regulation in Inter-Regional Comparison".

### Guest Professors



In June 2013 we welcomed University of California, Berkeley **Professor Lowell Dittmer** as Guest Professor to the DFG Graduierten Kolleg. Lowell Dittmer is editor-in-chief of the journal *Asian Survey*, and his research and publications cover Chinese political reform and international relations. During his Guest Professorship he met individually to advise a number of doctoral and post-doctoral fellows, gave a talk in the Research Forum on June 12, 2013 about Chinese Political Morality and joined the June Workshop to comment on doctoral fellows preliminary research findings. Lowell Dittmer lent important insights into publishing Chinese Studies research out of his long experience as editor of a major journal, and consulted with the senior members of the Kolleg on the extension bid and future development of the Graduierten Kolleg



In June and July 2013 **Professor Saadia Pekkanen**, who holds the Job & Gertrud Tamaki Chair at the Jackson School of International Studies at the University of Washington, Seattle, joined the Graduierten Kolleg as Guest Professor. Saadia Pekkanen's research and publication profile is in international political economy and international trade law, and she has written extensively on defense and trade issues in the East Asian region. While in Duisburg, Saadia Pekkanen joined the June Workshop to comment on doctoral fellows' preliminary research findings, and delivered a talk in the Research Forum on July 3 with the title "Japan's Space Policy: From the Market to the Military". She additionally organized a seminar with post-doctoral scholar **Kerstin Lukner** on the topic of her new research about external insti-

tutions. Saadia Pekkanen met individually with a number of the doctoral and post-doctoral fellows to advise the development of their research and to comment on book proposals and drafts of journal articles. She also joined the Review Colloquium on the basis of which the DFG Senate decides the extension of the Kolleg for a second funding period commencing in April 2014. The Kolleg welcomed the chance to develop a closer cooperation in doctoral training with the Jackson School PhD Program in International Studies, which is directed by Saadia Pekkanen.



**Professor Keping Yu** (Beijing University) visited Duisburg as a Guest Professor of the DFG Research Training Group 1613 Risk and East Asia in October 2012. His public lecture “Social Innovation in China” took place on October 29, 2012, 6–8 pm at the Gerhard-Mercator-Haus in Duisburg. Professor Keping Yu is one of the most famous Chinese political scientists. His recent article “Democracy is a good thing” caused a stir in China and worldwide. He was named as one of the 100 most influential global thinkers in 2011 by the renowned *Journal of Foreign Policy*. Keping Yu is a frequent visitor at the Institute of East Asian Studies and the Faculty of Social Science, which awarded him an honorary doctorate in May 2008. He specializes in comparative politics, globalization and civil society, political philosophy and governance.



**Professor Ellis Krauss, Ph. D.**, was Guest Professor at the University of Duisburg-Essen at October/November 2012. Ellis Krauss, Professor of Japanese Politics and Policy Making at the School of International Relations and Pacific Studies, University of California, San Diego, has been meeting with doctoral fellows and giving a public lecture during his residency in Duisburg. His most recent book, “The Rise and Fall of Japan’s LDP: Political Party Organisations as Historical Institutions” (with **Robert Pekkanen**), University of California Press, 2010, presents an historical institutional analysis of one-party rule in Japan since 1955 and its slow demise, evident most recently with the electoral victory of the Democratic Party Japan in 2009. His recent publications also include “Beyond Bilateralism: U. S.-Japan Relations in the New Asia Pacific” (with **T. J. Pempel**), Stanford University Press, 2004, which analyzes how recent trends in the Asia-Pacific over the past decade-and-a-half have reshaped the U. S.-Japan relationship. His detailed analysis of the relationship between politics, politicians and the mass media, “Broadcasting Politics in Japan: NHK and Television News”, Cornell University Press, 2000, is standard work on political communication and mass media in Japan, recently published in Japanese by Toyo Keizai Press. The publications of Ellis Krauss cover a number of issues in the political scientific study of East Asia and Japan, spanning domestic politics and international relations, with recent publications in the *American Political Science Review*, the *American Journal of Political Science*, *Comparative Political Studies* and the *British Journal of Political Science*. In Duisburg he gave a public lecture entitled “What’s Wrong with Japan? It’s the Politics!”.

### Research Students

In 2012/13 seven Research Students were recruited from the MA programs in East Asian Studies to join the Research Training Group. Research Students are assigned to assist the post-doctoral research activities, and carried out a number of important research tasks: **Anna Shpakovskaya, Angela Leggett, Jingjing Cui, Silviya Dimova, Amy Derr, Jan Oczko, Alla Nalivanskaya.**





A. Shpakovskaya A. Leggett J. Cui S. Dimova A. Derr J.-Ch. Oczko A. Nalivanskaya

**Anna Shpakovskaya** was awarded a stipend of the DFG GK 1613 commencing in January 2012 joining the 3rd cohort of PhD fellows.

**Angela Leggett, Jingjing Cui, Silviya Dimova** finished their one-year Research Student appointment in December 2012. Three new Research Students have been appointed in spring 2013: **Amy Derr** (MA MEAS+1), **Jan-Christian Oczko** (MA CEAS), **Alla Nalivanskaya** (MA MEAS)

## Course Program, Fall Term 2012/13, Spring Term 2013

The program included talks by four Guest Professors of the GRK 1613, and two lectures by former guest professors:

**Prof. Keping Yu, Ph.D.** (Director of the Center for Chinese Government Innovations at Beijing University, Deputy Director of the Central Compilation and Translation Bureau): Social Innovation in China (Oct. 29, 2012)

**Prof. Ellis Krauss, Ph.D.** (School of International Relations and Pacific Studies, UC San Diego and Guest Professor of the GK 1613): What's Wrong with Japan? It's the Politics! (Nov. 7, 2012)

**Prof. Shukai Zhao, Ph.D.:** China's Village Reform and Local Governance. – In cooperation with the research network "Governance in China" (Dec. 7, 2012)

**Prof. Margarita Estévez-Abe, Ph.D.** (Syracuse University, USA, Former GK 1613 Guest Professor): Institutional Change and Welfare Politics in Japan: Did Anything Change? (April 24, 2013)

**Prof. Atsushi Kondo** (Meijo University, Nagoya and Visiting Professor, Oxford University): Migration and Law in Japan (May 29, 2013)

**Prof. Dong Wang, Ph.D.** (Senior Fellow, Käte Hamburger Kolleg for Global Cooperation Research, Former GK 1613 Guest Professor): U.S.–China Relations: Managing Risk in the Asia-Pacific (June 3, 2013)

**Prof. Lowell Dittmer, Ph.D.** (University of California, Berkely, and GK 1613 Guest Professor): Chinese Political Morality (June 12, 2013)

**Prof. Shaocheng Tang, Ph.D.** (Chengchi University, Taipei): Current Development of the Cross-Strait Relations (June 19, 2013)

**Prof. Stevan Harrell** (University of Washington, Seattle): Native Practices, Revolutionary Policies, Erosion, and Fluvial Processes in a Mountainous Minority Community in Southwest Sichuan (June 20, 2013)

**Prof. Saadia Pekkanen, Ph.D.** (University of Washington, Seattle, and GK 1613 Guest Professor): Japan's Space Policy: From the Market to the Military (July 3, 2013)

**Prof. Yan Chen, Ph.D.** (University of Michigan, Ann Arbor): Which Hat to Wear? Impact of Natural Identities on Coordination and Cooperation (July 10, 2013)

**Prof. Robert Pekkanen, Ph.D.** (University of Washington, Seattle, and GK 1613 Guest Professor): How Do Electoral Systems Affect Legislative Organization? Japan in Comparison (July 17, 2013)

## Research Cooperation

In 2012/2013 several events were co-organized with our established partners:

- JSPS funded project on "Livelihood Security Systems and Global Economic Crises", University of Tokyo and White Rose East Asia Centre Gender Workshop (Nov. 26, 2012),

- Bonn Laboratory for Experimental Economics Expert Workshop “Methods and Challenges in Cross-Cultural Experimental Research – Insights from Experimental Economics and Psychology” (Dec. 14–15, 2012),
- University of Tokyo: New Directions in Comparative and Transnational Studies, Joint Workshop University of Tokyo and University of Duisburg-Essen (Jan. 25, 2013).

## Research and Training Workshops, October 2012 – September 2013

In the fourth year of its program the Research Training Group 1613 (co-)organized the following research and training workshops:

### Doctoral Fellow Workshop on Social Innovation in China, Oct. 22, 2012, Duisburg

The Doctoral Fellow Workshop on Social Innovation in China took place on October 22, 2012, 10:00–16:20 in room LC 141, Campus Duisburg. The workshop was designed to enable PhD students to consult with Prof. Keping Yu and to receive feedback on their individual PhD projects. The workshop included two sessions. In the morning PhD fellows presented their projects and received feedback by Prof. Keping Yu. In the afternoon fellows were given the opportunity to meet with an experienced scholar in their field for individual consultation.

### Gender Research and Mentoring Workshop, Nov. 26, 2012, Duisburg

The “Gender Workshop” took place on November 26, 2012 at the University of Duisburg-Essen and was organized by the DFG Research Training Group 1613 “Risk and East Asia”, University of Duisburg-Essen and the JSPS funded project on “Livelihood Security Systems and Global Economic Crises”, University of Tokyo. Lectures included:

**Mari Osawa:** Japan’s Postwar Model of Economic Development has Rendered Japanese Society Vulnerable to Crises and Disasters

**Hyunji Kwon:** Woman in East Asian Labor Markets

**Kayo Onishi:** Why not Universal Coverage? Maternity Benefits and the Clientele Politics in Post-War Japan

**Stephanie Bräuer:** Legal Claims of Women Cooperating with Women’s Organizations: Changing Power Relations of Women in China

**Naoto Fukuda:** Hartz-Gesetze als Aktivierungspolitik (lecture in German language)

**Christine Wimbauer, Julia Teschlade:** Emerging Care and Body Economies in East Asia – Transnationalizing Inequalities

**Kristin Surak:** Migration Industries and East Asian Democracies

**Karen Shire:** Who Cares? Policies Encouraging Domestic Household Labor in Europe



### Methods and Challenges in Cross-Cultural Experimental Research – Insights from Experimental Economics and Psychology, Dec. 14–15, 2012, Duisburg

Organizers: **Heike Hennig-Schmidt** (University of Bonn), **Sven Horak** (University of Duisburg-Essen), **Gari Walkowitz** (University of Cologne)

The expert workshop mainly meant for experimental economists who are working on cross-cultural and intercultural projects, focused on questions such as “Why cross-cultural research is important”, “Methods and challenges in cross-cultural experimental research”, “What economists can learn from psychologists”. The Guest Lecturer was **Dr. Anu Realo**, Department of Psychology, University of Tartu (Estonia), an expert in cross-cultural research. She is Principal Investigator for the World Values Survey in Estonia as well as a Member of the Scientific Advisory Board of the European Social Survey (ESS). Anu Realo has published in top international journals like *Science*, *Journal of Personality*, *Journal of Cross-Cultural Psychology* and *European Journal of Personality*.

**Dr. Heike Hennig-Schmidt**, University of Bonn, opened the event on December 14 by a talk on “Culture and Negotiation: Bargaining between Germans and Chinese – An Experimental Study”. On the second day, **Anu Realo** gave a lecture on “Methods and Challenges in Cross-Cultural Research”.

Participating scholars presented papers pursuing experimental approaches in inter-cultural cooperation, reputational effects, trust, leadership, incentives and cognition. The subject of the workshop was well perceived by all participants and the discussion showed great demands to further dig into the topic. Behavioral economics, especially the field of cross-cultural experimental research can greatly benefit from approaches in cross-cultural psychology.



### **New Directions in Comparative and Transnational Studies, Joint Workshop University of Tokyo and University of Duisburg-Essen, Jan. 25, 2013, Duisburg**

The Joint Workshop of the University of Tokyo and the University of Duisburg-Essen “New Directions in Comparative and Transnational Studies” took place on January 25, 2013 in Duisburg. Comparative research is faced with a number of methodological and theoretical challenges, some of them old, some of them new. The aim of this workshop was to provide a forum for graduate students and scholars at the University of Tokyo and the University of Duisburg-Essen to discuss how they do research comparatively and transnationally. The focus was on research experiences and how to deal especially with methodological problems.

Presentations focused on the more well-known challenges of comparative and regional studies research might address the following issues: the problem of “small Ns” and too many variables, ways to generalize from a single case, the theoretical use of history in comparative analysis, the question of convergence or divergence in relation to large universal processes of change such as modernization and globalization, the usefulness of “western” social theories to frame research questions about East Asian social contexts, and the necessity to “create” new concepts or theories to fully explain changing East Asian societies.



Comparative studies scholars now recognize that many social processes are transnational, i. e. they are no longer contained by the boundaries of nation-states. Yet many modes of analysis, including social surveys, discourse and content analyses, and case studies, among others, continue to take for granted

that the nation-state provides the relevant unit of analysis. Though it is often difficult in practice to avoid “methodological nationalism” in empirical research design, some progress has been made in finding a way out of the national box. Transnational studies, with migration research taking the lead, have directed attention to the importance of cross-border social movements (or advocacy networks) and the role of non-governmental and transnational organizations in creating social order and regulating cross-border social processes, and they have grappled with the global reach of media, as well as religious and cultural movements.

### **Preliminary Results and Proposal Workshop, June 13–14, 2013, Duisburg**

The DFG Research Training Group 1613 “Risk and East Asia” June Workshops have concluded successfully. The Preliminary Results Workshop took place on June 13 and 14 and the Proposal Workshop on June 14 at the ZBT, Campus Duisburg.

Just back from China and Japan, seven members of the GK 1613 presented their preliminary results. They were offered the opportunity to present in front of the participating academics, including a number of renowned guest professors.

**Prof. Lowell Dittmer**, University of California, Berkeley

**Dr. Heike Hennig-Schmidt**, University of Bonn

**Prof. Robert Pekkanen**, University of Washington, Seattle

**Prof. Saadia M. Pekkanen**, University of Washington, Seattle

**Prof. Ding Kaijie**, China Centre for Comparative Politics and Economics, Beijing

**Prof. He Zengke**, China Centre for Comparative Politics and Economics, Beijing

On June 14 three Doctoral Fellows presented their dissertation proposals at the Dissertation Proposal Workshop.

After the workshop on June 14 the participants visited the Gasometer in Oberhausen and enjoyed the evening at a dinner in the restaurant *Homme D’or*.



### **Research Program**

With the recruitment of the third cohort of Doctoral Fellows and the Post-doctoral and Guest Professor programs in full-swing, the Research Training Group worked primarily on the development of its research program. The projects and activities are reported here by sub-theme of the research program.

## Sub-Theme Marketization

The strengthening of market mechanisms as the predominant means to organize the economic interaction between social actors is one of the strongest processes of contemporary global change. In its most visible form ‘marketization’ manifests itself in the transformation processes in which centrally planned economies like China are reorganizing themselves into market-based economies. Marketization covers the transition to a market economy (China) as well as the further liberalization of established market economies in the East Asian region (Japan, South Korea), but in our emphasis especially the role of re-regulation and new institutions in abating the social and economic risks of market-oriented transformations.

### **Sunkung Choi – Effects of Experiencing Economic Crisis on Risk Perception and Risk Attitudes; A Case from South Korea**

The purpose of this doctoral project, now in its third year, is to figure out the effect of experience of economic crisis on risk perception and risk attitudes and, especially, this study introduces the cases of South Korea. To answer the research questions the study applies both theoretical and empirical approaches, including experimental methods. Preliminary results of research conducted in South Korea and China during 2010 and 2011 reveal that South Koreans are extremely risk adverse in relation to labor market issues, but accept risk-taking in investment activities. The results suggest inefficient labor allocation in job markets and unstable financial structure of households. Through this research it is possible to figure out that economic crisis influence a lot to individual risk perception and risk attitudes and, consequently, influence to their economic decision-making processes such as job choices, investment, and so on. Biased risk perception is dangerous because it harms economic efficient in overall therefore, it is needed to correct the biased risk perception if it is the case after the economic crisis.

### **Mei Yu – Transforming Pairing Institutions for Poverty Alleviation: Mining and Corporate Social Responsibility in Fugu County, China**

Using the analytical framework of Strategic Group, the project is mainly aimed to explore how local government transfers resources from the corporate sector to villages in order to compensate for poverty and loss of livelihood in the case of “Fugu Phenomenon”. Based on participant observation, semi-structural interviews with research partners and secondary documentation surveys, the research findings show pairing schemes are partly transfers and other redistribution mechanisms to compensate for structural poverty induced by coal mining. However, relation (*guanxi*) realignment and management between local authorities, corporations and villagers plays the most important role in the case of “Fugu Phenomenon”.

#### *Presentations*

Corporate Social and Environmental Responsibility. – Deutsche Welle Global Media Forum 2013, Bonn, June 17–19, 2013 (attendance only).

Transforming Pairing Institutions for Poverty Alleviation: Mining and Cooperate Social Responsibility in Fugu County, China. – 7th annual conference of the European Association for South East Asian Studies, Lisbon, July 2–5, 2013.

#### *Research Stays*

August 2012–February 2013: Fieldwork in Beijing and Fugu County, China. The focus is on the development and perceptions of corporate social responsibility in the Fugu Case. Data collection methods: in-depth interviews, field observations and secondary documentation surveys.

August 2013–November 2013: Fieldwork in Beijing, Tongchuan and Fugu County, China. The focus is on the roles of and interactions between local cadres and entrepreneurs. Data collection methods: in-depth interviews, field observations and secondary documentation surveys.

### **René Trappel – Agrarian Change in Rural China: Commodification of Collective Land**

This doctoral project explores the role of socialist property institutions for the current commercial transformation of the Chinese agriculture. Based on the analysis of original empirical data (interviews, grey

literature, legal documents) its findings suggest a close connection between peasant differentiation, new legal instruments for the transfer of farmland and activities of local governments – leading to an emerging secondary market for collective land. New types of agrarian producers (‘supertenants’) appear to have a dominant position in this market, while sub-scale farming is rapidly losing in importance. The doctoral thesis has been submitted in May 2013.

#### *Postdoctoral Project*

In his post-doctoral project René Trappel explores the relationship between urbanization strategies and regime stability in developmental states.

#### *Publications*

**(with Thomas Heberer)** Evaluation Processes, Local Cadres’ Behaviour and Local Development Processes, *Journal of Contemporary China*, 22(84), 2013: 1048–1066.

#### *Presentations*

Fading out Peasant Agriculture in Rural China: The Role of Township and County Administrations in Agrarian Change. – ECARDC XI, Würzburg, April 11–13, 2013.

#### **Stenya Melnikova – Business Risk in the Chinese Energy Sector**

The PhD thesis will focus on the topic of corporate governance of Chinese National oil corporations from the perspective of principal-agent analysis. Apart from the case study the methodology will employ the results of the experiment conducted in China.

#### **Iva Ognjanovic – Organizational Commitment of Young People Working in a Foreign Company in China: Morality and Class Habitus**

The research examines the differences in employees’ habitual moral perceptions regarding own workplace behavior and the value of their work. Selection and treatment of employees in the company is divided into two distinct fields in which two different types of individuals compete: one characterized by ethos of indispensability with competent, hard-working, and sociable individuals, and one characterized by ethos of dispensability with incompetent, apathetic, and solitary individuals who change employers frequently.

#### **Ann-Kathrin Prior – New Types of Financial Institutions in China**

The research project analyzes lending processes of new types of financial institutions in China in order to further understandings of small business lending in transitional economies. Primary data used includes both experimental data and qualitative data gained from extensive interviews in the field. With the formal banking system as an exception, most institutions operate with only very minimal regulation and can draw upon both formal and informal information and enforcement systems. While the total lending volume of these institutions is still comparatively small, it remains to be seen whether and how their dynamic development and alternative lending techniques will affect the overall financial system in China.

#### *Presentations*

Small Business Lending in China: Insights from New Types of Financial Institutions. – Duisburg-Frankfurt Workshop “Institutionen in der Entwicklung Ostasiens”, University of Duisburg-Essen, University of Frankfurt, Duisburg, March 14, 2013.

Small Business Lending in China: Insights from New Types of Financial Institutions. – Joint East Asian Studies Conference East Asian Societies in Transition: Challenges and Connections, University of Nottingham, Sept. 5–7, 2013.

#### **Hanno Jentsch – Village Institutions and the Agricultural Reform Process in Japan**

The project seeks to clarify how informal institutions at the village level shape the outcome of the ongoing agricultural reform process in Japan. Field research includes qualitative analysis of the present state of institutionalized cooperation patterns in farm communities under the influence of the recent agricultural reforms aimed at the “marketization” of the Japanese farm sector.

**Dr. Yuan Li**

Yuan Li conducted the research project on political economy of public goods provision in China, which was an extension of his Ph. D. dissertation. In his project he studies how collective actions by the citizens affect the policy-making process on public goods provision in China.

*Publications*

Downward Accountability in Response to Collective Actions: The Political Economy of Public Goods Provision in China. In: *The Economics of Transition* (forthcoming).

(with Mario Gilli) A Model of Chinese Central Government: The Role of Reciprocal Accountability. In: *The Economics of Transition*, 21(3), 2013: 451–477.

**Dung Vu – Essays in Experimental Economics**

Essays in Experimental Economics. The papers study contribution to public goods, corruption and possible in-group discrimination effect. Preliminary findings include one significant and one insignificant determinant of corrupt mechanism.

*External Training*

Behavioral Ethics Area Corporate Development. – Taught by Prof. Dr. Bernd Irlenbusch, Summer term 2013, University of Cologne.

**Sven Horak – Automotive Manufacturer and Supplier Relationships in Japan. Do Cultural Factors Play a Role in Shaping the Relationship?**

The relationship between car makers and automotive suppliers in Japan are traditionally characterized as vertical in hierarchy, whereas the relationship of their US or European counterparts have a horizontal structure. The OEM-OES relationship of the horizontal type can be characterized as rational in a Western sense, formal, competitive and, among others, to a great extent heterarchic. The vertical structure evolved in Japan is strictly hierarchical but information flows more freely and personal ties are fostered by informal OEM-OES gatherings (jap. *Kyoryoku-kai*). The relationship is based on long-term commitment, cooperation, trust and mutual support (Clark/Fujimoto 1992: 140). Literature concludes that the vertical type of supplier integration pursued in Japan resulted in higher product quality, higher productivity and shorter development cycles (Clark/Fujimoto 1992: 163; Kotabe et al. 2003: 293). Thus it was recognized by the industry as more sophisticated and gave impetus for questioning the horizontal approach pursued in the West. But can a transfer from a horizontal to a vertical structure be achieved without risk?

*Publications*

The Influence of Cultural Factors on Decision-Making Behavior in Korea and Germany (in German). DuEPublico, University of Duisburg-Essen, 2013, 303 p.

(with Werner Pascha) Competitiveness of the Japanese and Korean Automotive Industry in Transition to Electromobility (in German). In: H. Proff, J. Schönharting, D. Schramm, W. Pascha (Hrsg.): *Schritte in die zukünftige Mobilität – Technische und betriebswirtschaftliche Aspekte*. Wiesbaden: Springer Gabler, 2013: 479–494.

(with Yasuo Saeki) The Role of Trust in Cultivating Relation-specific Skills. The case of a multinational automotive supplier in Japan and Germany. Duisburg Working Papers on East Asian Studies, 95, 2013, 20 p.

Cross-Cultural Experimental Economics and Indigenous Management Research – Issues and Contributions. Duisburg Working Papers on East Asian Studies, 92, 2013, 28 p.

Competitiveness of the European Automotive Industry in Electric Vehicles, subproject Japan & Korea, European Union (European Commission, EU-Tender: ENTR/09/030). Project leader: Prof. Dr. Heike Proff. Source: [http://ec.europa.eu/enterprise/sectors/automotive/files/projects/report-duisburg-essen-electric-vehicles\\_en.pdf](http://ec.europa.eu/enterprise/sectors/automotive/files/projects/report-duisburg-essen-electric-vehicles_en.pdf).

*Presentations*

Managing Informal Relation-based Networks in Korea. – Robert Bosch Korea, Management Meeting, Seoul, Yongin, Nov. 22, 2012.

Exploring the Influence of Indigenous Context Variables (ICV) on Decision-Making Behavior in Korea and Germany. An experimental approach. – The Peter J. Tobin College of Business, St. John's University, Queens, New York, March 8, 2013.

Cross-Cultural Experimental Economics and Indigenous Management Research – Issues and Contributions. – EastAsiaNet Research Workshop, Lund University, May 9–11, 2013.

**Steffen Heinrich – The Political Consequences of Expanding non-regular Labour. New Employment Risks and Partisan Politics in Japan and Beyond**

How different political factors have influenced recent labour market reforms in advanced democracies has been studied intensely in political research for some time. Only recently, however, have political scientists begun to consider the consequences of these reforms for politics itself. Recent studies on continental European countries suggest that policy preferences of non-regular and regular employees differ considerably and that this divide may constitute a strategic dilemma for parties who depend on labour's electoral support. The 2009 general election in Japan for instance indicates that non-regular jobs and employment status-related welfare have become salient for electoral mobilisation, though word is still out whether this reflects the growing labour market dualism of the last two decades or it is mainly due to the exceptional economic circumstances after the Lehman shock of 2008. To get a clearer picture of the substance of a potential structural realignment in Japan and other advanced democracies with strong labour market dualism, this project aims to analyse the importance of employment status for policy preferences of workers and how these may influence the policy positions and election strategies of parties. The first analytic part of the project analyses the case of Japan and consists of three parts: First it discusses the extent of institutional divisions between different employment statuses in Japan and how these may influence policy preferences in regard to employment regulation, welfare and state intervention. Secondly, it analyses World Value Survey (WVS) and Japan General Social Survey (JGSS) data to understand the actual importance of status-related differences for preference formation. Thirdly, it compares party positions during the 2009 election with regard to employment and welfare.

*Presentations*

(with Margarita Estévez-Abe) Private Pensions in Coordinated Market Economies: A comparative study of the employment-pension nexus in Germany and Japan since 2001. – SASA Mini Conference Social protections transformations, development and the role of the state around the world: Challenges, drivers, and responses, SASE Annual Conference "States in Crisis", University of Milan, June 27–29, 2013.

**Sub-Theme Individualisation**

Individualization involve shifts from public to private in the field of social risks and the privatization of economic risks, especially employment risks, to individuals, but also the flip-side of the development of new capacities for individual responsibility and self-actualization, not least of all evident in changing family and gender relations and value shifts.

**Chih-Chieh Wang – Labor Market Institutions and Social and Economic Risk-Shifting in Taiwan**

This doctoral project investigates labor market institutions in Taiwan from 2000 onwards, specifically considering how relevant socio-economic risks borne by workers and employers have shifted, with a focus on non-standard employment (part-time and fixed-term work, and labor contracting and dispatching). During 2010 and 2011 Chih-Chieh Wang designed and conducted a national representative survey in Taiwan, in cooperation with Prof. Jyh-er Roger Ko of the National Taiwan University, Taipei. Preliminary analysis suggests that employers use non-standard employment to cope with business fluctuation and pay non-standard workers significantly less than full-time regular workers, in terms of hourly wage and benefits, which implies that non-standard employment is a mechanism with which employers shift their business risk to workers. Multiple regression analyses based on organizational



theories reveal heterogeneity among the four types of non-standard employment and suggest that employers may choose certain type(s) of non-standard employment to fulfill different organizational goals.

### **Magnus Dau – Social Media and Their Impact on State-Society Relations in China**

This research project evaluates how the Chinese state adapts to new technologies to interact with its citizens by taking environmental protection bureaus as case studies. As a result of the mostly digital field research characteristics of state-society communication have been identified as well as major factors shaping the process itself. Social media constitute an irregular platform for authoritarian deliberation.

#### *Presentations*

Engaging Society on Sina Weibo – the Case of Environmental Protection Bureaus. Quantitativ-qualitativer Forschungsansatz. – DGA Nachwuchstagung, Jena, January 18–20, 2013.

Engaging Society on Sina Weibo – the Case of Environmental Protection Bureaus. – Annual Conference of the Association of Asian Studies, Association of Asian Studies, San Diego, March 21–24, 2013.

(with **Stephanie Bräuer**) Area Studies and the Disciplines – Disjunctive Discourses? – The 7th annual conference of the European Association for South East Asian Studies, Lisbon, July 2–5, 2013.

#### *Teachings*

China's Foreign and Security Policies in the Context of East Asia, Winter term 2012/13

State and Society in China: Media and Politics, Winter term 2012/13

State and Society in China, Summer term 2013

Political Culture and Politics in China, Summer term 2013

### **Vitali Heidt – Change of Social Security Institutions in Contemporary Japan: Effects and Influences of Institutional Change for the Rural Elderly Population**

By examining the relation of life courses and possible risks, this PhD project tracks the issues of regional welfare distribution, the social embeddedness of urban and rural elderly, and the ways in which social security systems amplify or diminish risks of the elderly livelihood in contemporary Japan. Following up a stay in Tokyo for expert opinions, Vitali Heidt will proceed with an ethnographic approach / participant observation in a rural and urban settlement to study the shaping mechanisms of the rural elderly life. Preliminary findings indicate a shift from social to public institutions in care and support reliance, and furthermore, that rural communities seem to fare better in creating socially inclusive institutions.

#### *Presentations*

Doitsu no kaigo hoken seido [*The German Long-Term Care Insurance System*]. – Nursing Department of Jichi Medical, Shimotsuke, Japan, July 12, 2013.

#### *Field research*

09/2012–12/2012: Interviews and participant observation in Tokyo

03/2013–08/2013: Interviews and participant observation in Komagane and Tokyo

### **Stephanie Bräuer – Social Organization in the People's Republic of China: New Forms to Initiate Policy Change? A Case Study of Anti-Domestic Violence (ADV) Organizations in Beijing**

The project tries to understand what role these actors play in policy decision-making processes. Preliminary findings show that mobilization strategies, such as legal-aid, non-state-state cooperation, allow the organizations to initiate policy changes, especially in legislation.

#### *Presentations*

Gender Social Organizations in the People's Republic of China: New Forms to Initiate Political Change. A Case Study of the Anti-domestic Violence (ADV) Organizations in Beijing. – DGA-Nachwuchstagung, Jena, Jan. 18–20, 2013.

The Role of Pro bono Legal Aid in the Anti-domestic Violence Movement in the People's Republic of China (PRC). – Annual Conference of the Association of Asian Studies, Association of Asian Studies, San Diego, March 21–24, 2013.

Chinese Women's Organizations Combating Domestic Violence (DV): Initiators of Legal Change. – Lady Dorth Protest Conference, Feminist & Women's Studies Association, UK & Ireland (FWSA), Nottingham, June 21–23, 2013.

(with Magnus Dau) Area Studies and the Disciplines – Disjunctive Discourses? – 7th EuroSEAS Conference, Lisbon, July 2–5, 2013.

#### *Publications*

Aktivismus gegen häusliche Gewalt in Peking, VR China. In: Gewalt gegen Frauen in Südostasien und China: Rechtslage, Umgang, Lösungsansätze. Berlin: Regiospectra Verlag, 2013: 217–232.

(郭建梅) Guo Jianmei: Kämpferin für die Frauenrechte. In: Gewalt gegen Frauen in Südostasien und China: Rechtslage, Umgang, Lösungsansätze. Berlin: Regiospectra Verlag, 2013: 233–238.

#### **Alison Lamont – Family Experiences of Disaster: Cases from 2008 Wenchuan Earthquake, China**

This project is aimed at understanding family dynamics under conditions of acute crisis using the Wenchuan Earthquake as a case study. Preliminary findings show that the role families played in supporting individuals affected by the Wenchuan Earthquake was shaped by the family structure, and that opportunities for the renegotiation of family roles were opened up by the disaster.

#### *Research Stays*

Oct.–Dec. 2012 & March–June 2013: Life interviews and collecting Chinese documents in Chengdu, Ya'an and Beijing

#### **Sub-Theme Decentralization**

The Research of the DFG GK 1613 addresses two senses of decentralization: decentralization in the sense of shifting responsibilities and accountabilities from the upper to the lower political levels and the dispersion of central political authority, but also from “the bottom up” in reference to chances for participation and the impact on local autonomy and sustainability in local regions.

#### **Armin Müller – Decentralization, Risk and Strategic Groups in China's Rural Health Reforms**

The doctoral thesis focuses on the role of institutional change and innovation in the rural health sector. Cooperative health insurance and a number of complementary policies are designed to transform the rural health sector and enhance the integration of China's fragmented social welfare system. However, implementation of the reforms is still inhibited by numerous difficulties, associated with regional disparities in economic development, lingering deficits in capacity and diverse features of China's local administrative and political structures.

#### *Presentations*

Strategic Agency, Rural Cadres and the Problem of Voluntary Participation in the New Rural Cooperative Medical System. – Paper presented at the Annual Conference of the Association for Asian Studies (AAS), San Diego, March 21–24, 2013.

Informal Institutions in China's Social Policy – The Case of Rural Health Insurance. – FLOOR project in Bielefeld, July 24, 2013.

Strategic Agency, Rural Cadres and the Problem of Voluntary Enrollment in the New Rural Cooperative Medical System. – The Ninth International Conference on Social Security – Sustainable Development of Social Security in Hangzhou, Aug. 24–26, 2013.

#### **Susanne Löhr – The Impact of Vertical Competition on China's Sub-Provincial Arrangements: The Reform of Direct Provincial Administration of Counties**

This project investigates the changing sub-provincial setting of administrative levels in China. It finds that the reform scheme of ‘province managing counties’ transfers new roles and responsibilities to counties by intensifying inter-administrative competition for state resources and by reconfiguring the administrative boundaries of sub-national units.

*Presentations*

Conducting Fieldwork on the Reform of Direct Provincial Management of Counties. – Guest in Jesper-Schlæger, PhD's class at Sichuan University, Chengdu, Oct. 30, 2012.

Decentralization and China. – Utrecht University School of Law, June 17, 2013.

*Publications*

**(with Zhang Zhanbin)** Zhongguo xinxing chengzhenhua beijing xia sheng zhi guan xian tizhi gaige – fang guojia xingzheng xueyuan jingjixue jiaoyanbu zhuren Zhang Zhanbin jiaoshou [*Direct Provincial Administration of Counties During the Process of New Type of Urbanization: Interview with Professor Zhang Zhanbin*]. In: Jingji Shehui Tizhi Bijiao [*Comparative Economic & Social Systems*], No. 6, Vol. 164, 2012: 1–12.

*Review of* Christian Wuttke: Die chinesische Stadt im Transformationsprozess. Governanceformen und Mechanismen institutionellen Wandels am Beispiel des Perlfussdeltas. In: Zeitschrift für Wirtschaftsgeographie, No. 57, Vol. 3/2013: 182–184.

*Research stays*

Oct.–Nov. 9, 2012: Research on the provincial management of counties and the decentralization of economic powers to counties in Guangzhou, Chengdu and Beijing: Interviews with local government officials and Chinese researchers.

**Hans-Christian Schnack – The Making of Minority Language Policies in Chinese Schools – Street-level Bureaucracy and Curriculum Decisions in Xishuangbanna, Yunnan**

With this research project Hans-Christian Schnack analyzes how institutional settings of school management between centralization and decentralization shape the implementation of minority language policies in China. The research findings show that new modes of discretion at schools create a limited space for school-based decision making that allows teachers and principals to shape curricula and ultimately – as intermediary actors between government and citizens – to make policies.

*Presentations*

Chair and co-organizer of the panel “Extending the Boundaries of the Welfare Domain – the Margins and the Marginalized in China’s New Social Policy”, Association for Asian Studies Annual Conference, San Diego, March 21–24, 2013.

Education and Bureaucracy: Challenging Minority Policy in Chinese Village Schools. – European Conference on Agriculture and Rural Development in China, Würzburg, April 11–13, 2013.

*Research stays*

May 2013: Xishuangbanna, Yunnan, China: Follow-up interviews with teachers and principals

**Ting Huang – Dynamics of Developing Old-Age Pensions in Rural China: Role of Local Government in Policy Innovation**

This research focuses on the important role that local governments play in the experimentation with the rural pension policy. It shows that there are initiatives from inside local governments to improve the provision of social goods in certain circumstances. The success of the local schemes is partly determined by evaluating whether the schemes are adaptive to the new situations raised by the institutional intersection in the context of the ongoing urbanization process.

*Presentations*

Dynamics of Developing Old-Age Pensions in Rural China: Role of Local Government in Policy Innovation. – Sozialwissenschaftlicher China-Workshop Iserlohn 2013: Regimelegitimität und sozialer Wandel in China. Schwerte, Feb. 2–3, 2013.

*Research stays*

Sept.–Nov. 2012: Data gathering in Daxing, Beijing and Baoji, Shaanxi province, including written documents and materials, and interviews with social security officials at the provincial, city, and county levels, as well as some scholars.

March–May 2013: Data gathering in Daxing, Beijing and Baoji, Shaanxi province, including interviews with rural residents and the important officials of local government.

### **Anna Shpakovskaya – Government Non-Profit Relationships in the Post-Wenchuan Earthquake Reconstruction in China**

Based on the framework of “Actor Centered Institutionalism” the main actors involved in the planning and implementation of the Red Cross Reform are interviewed with the focus on their preferences, perceptions and capacities. Written documents on the history of the Red Cross in China, its present reforms and the reforms of the social management are analyzed. To better fit into a new model of social management the Red Cross is being transformed into a “Hub organization”. By introducing a model of “Dual Management” the Red Cross aims to secure its resources from the government and enhance its cooperation with grass root NGOs and the public in delivering public services.

#### *Research stays*

Sept. 4–Oct. 16, 2013: Conducting 7 interviews with representatives of the Red Cross Reform Planning Group, Red Cross Headquarter Office, and the Red Cross Public Supervision Committee, gathering information about the present stage of the scholarly research on public administration, management of social organizations and Red Cross Reform in China, establishing contacts necessary for second round interviews in the second stage of the field research.

### **Sub-Theme Transnationalization**

Transnationalisation moves toward the supranational level of institutional change, both deregulatory in relation to the internationalisation of capital markets, and new regulatory in respect to new standards and protections, for example, for consumers, for equal opportunities of women or migrants rights. Here the global role of East Asia and the integration of China and Japan into, as well as their impact on, international regimes builds one dimension of this process of institutional change. Another dimension addresses how East Asia itself is perceived as a risk from a European perspective.

### **Martin Heinberg – Analysis of Chinese Consumer Behavior: Value Propositions and Perceptions Determining Purchasing Decisions with Respect to Foreign and Local Consumer Good Brands**

The thesis aims to deliver a better understanding of Chinese consumer behavior for foreign and local brands, which are interpreted as a risk reducing mechanism for consumers. The behavior is assessed in terms of quality beliefs, attitudes, purchase intentions and the actual purchasing decision using advanced methods like hierarchical linear modeling and behavioral economics experiments. Results point to enhanced advertising by global and local brand positioning, a higher willingness to pay of consumers for global conspicuous products after face loss and a higher willingness to pay for local iconic products in animosity situations.

#### *Presentations*

Marketing in China. – Private Hochschule Göttingen, Nov. 26, 2012.

Introduction to the Chinese Economy. – Private Hochschule Göttingen, Nov. 27, 2012.

Face Consciousness, Face Loss and Foreign Product Choice. – Workshop on Methods and Challenges in Cross-Cultural Experimental Research – Insights from Experimental Economics and Psychology, Duisburg, Dec. 14–15, 2012.

#### *Teachings*

(with Peter in der Heiden and Markus Taube) Business and Economy in China, Winter term 2012/13  
Einführung in die chinesische Wirtschaft (Lecture Bachelor students), Summer term 2013

(with Peter in der Heiden) China Management Cases, Summer term 2013

### **Melanie Wacker – Risks and Responsibilities – Human Security and Japan’s Ban on Landmines and Cluster Munitions as Field of Activity for Non-state Actors**

This project examines how human security-related policy is negotiated and implemented in Japan as responsibilities for securing against human security risks are shifted from the state to non-state actors. Research methods comprise the triangulation of documentary analysis and qualitative interviews while

the research focus is the subfield of disarmament of conventional weapons – landmines and cluster munitions – as an area where notions of national and human security collide. Preliminary results suggest that non-state actors play an important role in the implementation of human security-related policy abroad and in Japan which the state cannot fulfill or is not willing to fulfill while they heavily depend on the state for funding and support.

Since Sept. 2013: Research Assistant in the DFG funded project “Cross-Border Temporary Staffing. Market-Making and Transnational Regulation in Inter-Regional Comparison”

### **Kai Duttler – A Behavioral Finance Perspective on Momentum. Comparative Experimental Studies in Germany and Japan**

Kai Duttler’s research mainly focuses on cross-cultural differences in behavior among market participants in Western countries and Asia, especially Japan. Several comparative experimental studies are conducted; these are motivated by significant disparities in stock price momentum around the world, and models based on psychological biases explaining this phenomenon.

#### *External Trainings*

Japanese Language, LSI Landesspracheninstitut Bochum, Japonicum, July 22–Aug. 9, 2013

#### *Trainings*

English, PLEASE, organized by UDE Doknet, June 20/21, 2013

### **Dr. Kerstin Lukner – The Governance of Pandemic Risks in East Asia**

The post-doctoral research project undertakes a comparative study of pandemic risk governance in China and Japan. It focuses on the questions of how pandemic risks (avian influenza, swine flu) are perceived in China and Japan and of how these governments have been reacting to the pandemic risk challenge.

#### *Publications*

**(with Alexandra Sakaki)** Guest editor: Japan’s Crisis Management amid Growing Complexity: In Search of New Approaches. In: Japanese Journal of Political Science, Vol. 13, No. 1, 2013.

**(with Alexandra Sakaki)** Japan’s Crisis Management amid Growing Complexity: In Search of New Approaches. In: Japanese Journal of Political Science, Vol. 13, No. 1, 2013: 83–104.

**(with Alexandra Sakaki)** Lessons from Fukushima: An Assessment of the Investigations of the Nuclear Disaster. In: The Asia-Pacific Journal, Vol. 11, Issue 19, No. 2, May 13, 2013, <http://japanfocus.org/-Alexandra-Sakaki/3937>.

#### *Presentations*

Jointly Facing Pandemic Risks: Japan and ASEAN. – German Association for Social Science Research on Japan Annual Conference, Political Science Working Group, Weingarten, Nov. 24, 2012.

Zum politischen Umgang mit neuen Pandemierisiken in Asien [*On the political handling of new pandemic risks in Asia*]. – Lecture Series (Offener Hörsaal): Globalisierende Epidemien – Gesellschaftliche Wahrnehmung und Health Governance in transregionalen Verflechtungen. Freie Universität Berlin, July 1, 2013.

#### *Teachings*

Module “Japanese Politics” (1. Japan’s Political System, 2. The International Relations and Foreign Policy Making of Japan)

**(with Steffen Heinrich)** Politics and Society in Japan

## 5

## DIPLOMA AND DOCTORAL THESES ABSCHLUSSARBEITEN, DISSERTATIONEN, HABILITATIONEN

Completed Abgeschlossenen

### 1 Diploma Theses *Diplom-, Magister- und Abschlussarbeiten*

- Dorothea Adolph** Unternehmensstrategie und die Grenzen modelltheoretischer Abstraktion – Am Beispiel TÜV NORD auf dem chinesischen Bahn-Markt (*Markus Taube*)
- Florian Becker** Analyse der strategischen Ausrichtung deutscher Automobilhersteller auf dem chinesischen Markt (*Markus Taube*)
- Stefan von den Benken** Untersuchung der Anwendungsproblematik des Konsumgütermarketingmix (4P) in der VR China (*Markus Taube*)
- Laura Bergmann** Der Einfluss von chinesischer Kultur und Rahmenbedingungen auf den Einsatz der Marketinginstrumente seitens internationaler Unternehmen (*Markus Taube*)
- Violetta Borger** Analyse der Umsetzung von CSR-Standards in der VR China unter besonderer Berücksichtigung der Arbeitsbedingungen (*Markus Taube*)
- Petra Brändel** Transnationale Arbeitsbeziehungen. Eine qualitative Interviewstudie zu arbeitsplatzbezogenen Chancen und Risiken japanischer Hotelfachfrauen in Deutschland (*Karen Shire / Steffen Heinrich*) (*eingereicht, wird derzeit begutachtet*)
- Philipp Chmielinski** Zivilgesellschaft in Japan. Welche Rollen haben NPOs innerhalb der japanischen Gesellschaft eingenommen? (*Karen Shire / Steffen Heinrich*)
- Falko Flohrmann** Bedeutung der Produktherkunft für den chinesischen Konsumenten. Eine Analyse anhand des COO-Effektes (*Markus Taube*)
- Tobias Gerster** Industriepolitische Ziele und Ergebnisse der staatlichen FDI-Steuerung Chinas am Beispiel der Automobilindustrie in China (*Markus Taube*)
- Besima Hajder** Komparative Analyse des zivilen Luftverkehrsmarktes am Beispiel von europäischen Fluggesellschaften unter Berücksichtigung des Struktur-Verhalten-Ergebnis-Ansatzes (*Markus Taube*)
- Nina Hecht** Zivilgesellschaftliche Gruppen zur Trostfrauen-Problematik in Japan (*Thomas Heberer*)
- Sebastian Heddier** Analyse der Wettbewerbsstrategien ausgewählter Sportartikelhersteller in der VR China (*Markus Taube*)
- David Hübner** China – a Developmental state? – Do Patterns of State Interference in the Financial System and Industrial Policy Fit the Developmental State Approach? (*Thomas Heberer*)
- Marie-Christin Jaenichen** Comparison of Educational Advantage of Girls in China and India (*Flemming Christiansen*)
- Katharina Jaroch** Herausforderungen für chinesische Unternehmen, auf dem deutschen Markt tätig zu werden – Eine vergleichende Fallstudie zu den Unternehmen Sany und Huawei (*Markus Taube*)
- Alexander Jungmann** Strategische Investitionsplanung im Einzelhandelssektor der VR China – Marktpotenzialuntersuchung auf Basis einer Clusteranalyse der entwicklungsstärksten chinesischen Städte (*Markus Taube*)
- Shing Cheung Kai** Problemanalyse und Strategiekonzeption zum Wissensschutz ausländischer Unternehmen in der VR China (*Markus Taube*)
- Verena Kaufmann** Analyse der Bestimmungsfaktoren sowie des Verlaufs der Inflation in der VR China von 2009 bis 2012 (*Markus Taube*)
- Chan-Hyong Kim** Die Rolle des Sportsponserings ostasiatischer Automobilhersteller in Europa (*Werner Pascha*)

- Tim Knobloch** Wirtschaftspolitische Ansätze Japans zur Bewältigung des Seltene-Erden-Problems – Eine Ziel-Mittel-Träger-Analyse (*Werner Pascha*)
- Christine Koriath** Kommunistische Werte im Wandel – Werte im zeitgenössischen China (*Flemming Christiansen*)
- Maren Krause** Identität und Integration – Analyse der Unternehmerstrukturen chinesischer Unternehmen in Deutschland anhand dreier Fallstudien (*Markus Taube*)
- Roger-Hans Kröll** Analyse der Rolle von Inward- und Outward-FDI für die Entwicklung der chinesischen Automobilindustrie (*Markus Taube*)
- Michael Krüger** Chinas Direktinvestitionen im Ausland (*Markus Taube*)
- Nicole Krümmel** ‚Burakumin‘: Zwischen Integration und Segregation (*Helmut Schneider / Winfried Flüchter*)
- Stefanie Lindlar** Territorialkonflikte im Südchinesischen Meer unter besonderer Berücksichtigung der Rolle Chinas (*Helmut Schneider / Winfried Flüchter*)
- Michelle Lorenz** Die Gleichstellungsdebatte in der VR China – Die Rolle des chinesischen Frauenverbandes als zentraler Akteur im Genderdiskurs (*Flemming Christiansen*)
- Jiang-Haur Man** Analyse der Präferenzen chinesischer Automobilkunden auf der Grundlage ausgewählter Kriterien (*Markus Taube*)
- Albert Metz** Umweltpolitische Strategien der Luftreinhaltung in China (*Helmut Schneider / Markus Taube*)
- Stefanie Meyer** Die internationale Wettbewerbskraft der chinesischen Photovoltaikindustrie – Eine Analyse auf Grundlage des Diamantenmodells von Porter (*Markus Taube*)
- Boris Mrcic** Das Subsidiaritätspinzip in der Integrationspolitik Japans – lokale Regierungen als Supporter oder Challenger? (*Christian Tagsold / Karen Shire*)
- Carolin Müschenborn** China als Wirtschafts- und Entwicklungspartner: Chancen und Herausforderungen für die Entwicklung Ecuadors und seines Konzepts des „Buen Vivira“ (*Markus Taube*)
- Delia Mustafovska** Japans Gesellschaft: homogen oder multikulturell? Soziopolitische Leitbilder und ethnisch-kulturelle Diversität unter besonderer Berücksichtigung der koreanischen Minderheit (*Helmut Schneider / Winfried Flüchter*)
- Ngoc-Thu Nhan** Das Bildungssystem als Grundlage der Entwicklung und des Wachstums von Volkswirtschaften: Eine komparative Studie zwischen Deutschland und der VR China (*Markus Taube*)
- Remigius Nobis** Perspektiven wirtschaftlicher und technologischer Entwicklung in japanischen Regionen unter besonderer Berücksichtigung des aktuellen Clusterkonzepts (*Werner Pascha*)
- Tobias Platner** Die Nutzung der Windenergie in der VR China: Möglichkeiten und Grenzen – untersucht am Beispiel ausgewählter Regionen (*Helmut Schneider / Winfried Flüchter*)
- Patrick Prädikow** Der Nuklearkonflikt auf der koreanischen Halbinsel und Chinas Ansehen in der internationalen Gesellschaft (*Thomas Heberer*)
- Christine Pudenz** Business Development im Bauingenieursdienstleistungssektor – Eine Analyse der Markteintrittsmöglichkeiten in China am Beispiel des Unternehmens Vössing (*Markus Taube*)
- Raik Richter** China auf dem Weg vom fossilen zum solaren Zeitalter? Nutzungspotenziale der Solarenergie zur Verringerung des Kohleverbrauchs – am Beispiel der Provinz Heilongjiang (*Helmut Schneider / Winfried Flüchter*)
- Parichat Sae-Lao** The contribution of tourism towards sustainable development: A focus on selected hotels in Thailand and PR China (*Helmut Schneider / Markus Taube*)
- Andre Salai** Maskulinität im Wandel – Japans Männerbild zwischen *Salaryman* und *Soushokukeidan-shi* (*Karen Shire / Steffen Heinrich*)

- Nadine Schieckiera** Karrieremuster japanischer Frauen in der Wirtschaft (*Werner Pascha*)
- Sebastian Schrade** The Behavior of Chinese Scientists in Sino-German Research Collaboration – the Imagined Role of Chinese Culture Standards (*Thomas Heberer*)
- Stefan Schulz** Volunteerism in China: Why Was Volunteering so Successful in the Aftermath of the Wenchuan Earthquake? (*Flemming Christiansen*)
- Martin Sprenger** Markteintrittsstrategien und Marktbearbeitungsmodelle der deutschen Automobilindustrie in der VR China am Beispiel der BMW-Group (*Markus Taube*)
- Evgenij Tscherniak** Sozioökonomische Auswirkungen der chinesischen Migration in ausgewählten fernöstlichen Regionen Russlands seit Ende der Sowjetunion (*Helmut Schneider / Winfried Flüchter*)
- Alexandra Waczlawczyk** Zusammenhänge von Diskriminierung und ökonomischer Performance am Beispiel der Huaqiao in Indonesien (*Helmut Schneider / Markus Taube*)
- Jan Wrede** Die Gesundheitspolitik Chinas im Wandel – Gesundheitspolitische Reformansätze der Zentralregierung im Spannungsfeld zwischen staatlicher Regulierung und Privatisierung (*Markus Taube*)
- Kenneth Wright** German-Chinese interculturality in global companies using the example of flight attendants in bicultural work teams (*Helmut Schneider / Winfried Flüchter*)
- Ulya Yavuz** Die Entwicklung der Sexindustrie in der VR China seit Beginn der Transformation – am Beispiel ausgewählter Standorte (*Helmut Schneider / Winfried Flüchter*)
- Natalya Zemerova** Autobiographien japanischer Topmanager – eine vernachlässigte Quelle der Japanstudien? (*Werner Pascha*)

## 2 Bachelor Theses *Bachelor-Arbeiten*

Completed *Abgeschlossen*

- Cihan Arslan** Kommunikationspolitik von Elektromärkten im sozialen Netzwerk Facebook: Eine Untersuchung der offiziellen Facebookseiten (*Markus Taube*)
- Veselina Petkova Asieva** Analyse der protektionistischen Praktiken in den internationalen Handelsbeziehungen der VR China (*Markus Taube*)
- Olga Burgardt** Subjektivierung und wissensintensive Arbeit – der ambivalente Zugriff auf die kreative Arbeitskraft (*Karen Shire / Markus Tünte*)
- Mehtap Dagci** Ethno-Marketing am Beispiel der in Deutschland lebenden Türken in Bezug auf die Telekommunikationsbranche (*Markus Taube*)
- Jing Ding** Eine komparative Studie des Minderheitsaktionärsschutzes bei Aktiengesellschaften im chinesischen und deutschen Corporate Governance System (*Markus Taube*)
- Nesrin Günel** Untersuchung von Führungsstilen unter besonderer Beachtung von Frauen in Führungspositionen (*Markus Taube*)
- Judith Hendricks** Anerkennung in der Pflegearbeit. Zum ambivalenten Anerkennungsverhältnis der Altenpflege (*Frank Kleemann / Markus Tünte*)
- Daniela Hög** Belastungswirkungen ergebnisorientierter Steuerungsformen. Eine Analyse am Beispiel Zielvereinbarungen (*Frank Kleemann / Birgit Apitzsch*) (*eingereicht, wird derzeit begutachtet*)
- Viktoria Iordanova** Möglichkeiten zur Kundenbindung im Textileinzelhandel (*Markus Taube*)
- Fatma Koc** Untersuchung der Möglichkeit von Qualitätssteigerungen im Rahmen einer Umstrukturierung der bestehenden FMEA der ANF Duisburg GmbH (*Markus Taube*)
- Özlem Kocak** Analyse der Wirkung von Online-Kundenrezensionen auf die Kaufentscheidungen von Konsumenten (*Markus Taube*)
- Miriam Letzig** Soziale Effekte von Kombilöhnen. Warum die Reziprozitätsnorm Beschäftigungsverhältnisse beeinflusst (*Frank Kleemann / Markus Tünte*) (*eingereicht, wird derzeit begutachtet*)
- Isabel Litwak** Chinesische Investitionen in Deutschland (*Markus Taube*)



**Daniel Enver Merdan** Corporate Social Responsibility – Herausforderungen und Besonderheiten für die Umsetzung in der Türkei (*Markus Taube*)

**Aysun Murahanoglu** Nachhaltigkeit im Fokus des Lieferantenmanagements am Beispiel eines Finanzdienstleisters (*Markus Taube*)

**Esra Önal** Untersuchung der Einsatzmöglichkeiten von Social Media Marketing für die Neukundenakquisition am Beispiel der SIGNAL IDUNA Gruppe (*Markus Taube*)

**Selma Öztürk** Analyse der Funktion von Social Media Marketing in der Touristikbranche anhand von Facebook und Twitter (*Markus Taube*)

**Thorsten Rudnick** Individualisierung oder neue Kollektivität? Wie entwickeln sich aus den Individuen der Postmoderne Angehörige einer Szene? (*Karen Shire / Steffen Heinrich*)

**Funda Saracoglu** Analyse ausgewählter Erfolgsfaktoren der Auslandsentsendung (*Markus Taube*)

**Jan Ole Stoltze** Frauenerwerbstätigkeit in Japan im Wandel – Muster, Bestimmungsgründe und Konsequenzen (*Werner Pascha*)

**Lukas Stolz** Fukushima als Chance zur Neuordnung der energie- & wirtschaftspolitischen Strategie Japans (*Werner Pascha*)

**Seyyid Yorulmaz** Instrumente der Kundenbindung am Beispiel des Unternehmens Apple (*Markus Taube*)

**Lei Zhang** Überwachungsorgane der börsennotierten Gesellschaften in der VR China (*Markus Taube*)

### 3 Master Theses *Master-Arbeiten*

Completed Abgeschlossen

**Yasmin Amirhaji** Analyse des Einsatzes von Instrumenten der Kundengewinnung und Kundenbindung bei deutschen Handelsunternehmen (*Markus Taube*)

**Yulia Aristova** Global Governance: One World, Different Dreams (*Flemming Christiansen*)

**Anastasia Belonogova** The Retreat of the Welfare State in the Health Care Sector in Russia and China. Comparison between Health Care Systems of both Countries (*Thomas Heberer*)

**Inga Beyler** Consumer attitudes towards electric vehicles in China and South Korea (*Werner Pascha*)

**Jingjing Cui** Women on Board and Corporate Performance in Chinese Auto Industry – a comparative study with us (*Markus Taube*)

**Michael Elting** Prospects of a China-Japan-Korea Free Trade Area: A Meta Analysis (*Werner Pascha*)

**Christine Haakshorst** Official Foreign Policy Framing and the Popular Voice in China: Analysis of Online Chinese Perceptions of the North Korea Conflict 2013 (*Flemming Christiansen*)

**Nevia Koneitzko** Establishing Organic Food in China. A Smart Practice Approach Modded after the Californian Experience (*Markus Taube*)

**Iwona Malecki** Social Media als Herausforderung in B2B-Unternehmen: Nutzung von Social Media zur Ansprache von Geschäftskunden im Schwerpunktbereich der Baubranche (*Markus Taube*)

**Phillipp Mark** Japan's 'Integrated Social Security and Tax Reform' from the Perspective of the Political Economy of Policy Reform (*Werner Pascha*)

**Nhu Ha Nguyen** The New Media Strategy of Environmental non-governmental Organizations in Internet Engineered Social Movements. The Case of Vietnam (*Thomas Heberer*)

**Kiwi Phanayangkul** Why do the Authorities in Taiwan Wish to be Protected by the US and Why do the Arms Sales Matter to Taiwan? (*Flemming Christiansen*)

**Katelyn Radack** China, the United States, and the Balance of Power on the Korean Peninsula (*Thomas Heberer*)

**Katja Restel** Organizational Attractiveness of Japanese Companies for German University Students (*Werner Pascha*)

**Anne-Kathrin Schmidt** Work-Family-Balance in China – Quellen und Konsequenzen des Work-Family-Konfliktes sowie Managementimplikationen für die HR-Strategie (*Markus Taube*)

**Anna Sobolevskaya** History Lessons and Future Trends: Overfishing in China through the lens of Elinor Ostrom's Approach to Institutional Analysis (*Markus Taube*)

**Albert Triwibowo** China in the South China Sea: Between Status Quo und Revisionist Behavior (*Thomas Heberer*)

**Hua Wang** The Role of 'Country-of-Origin-Effect' in Chinese Consumers' Purchase Decision-making: The Case of Japanese High-Involvement Products (*Werner Pascha*)

**Yang Yu** Kulturelle Einflüsse auf die wirtschaftliche Entwicklung in der VR China (*Markus Taube*)

**Yuliya Yurkovskaya** How Do China and Russia Trust Sun and Wind? Empirical Comparison of the Acceptability of Renewable Energy in China and Russia in Respect of Their Marketability (*Markus Taube*)

#### 4 Doctoral Theses *Dissertationen*

Completed  
Abgeschlossen

**Kathrin Dudenhöffer** Akzeptanz von Elektroautos in Deutschland und China. Eine Untersuchung von Nutzungsintentionen im Anfangsstadium der Innovationsdiffusion (*Markus Taube*)

**Florian Englmaier** Managementansätze zur Überwindung von Informationsasymmetrien am japanischen Private-Equity-Markt (*Werner Pascha*)

**Yanjun Guo** Social linkages and the Evolution of the Social World (*in Chinese, submitted to Renmin University of China*) (*Flemming Christiansen*)

**Steffen Heinrich** Patterns of Dualisation. Coordinated Capitalism and the Politics of Flexible Labour Markets in Germany and Japan, 1990–2010 (*Karen Shire*)

**Tobias Hentze** Internationale Direktinvestitionen in Japan: Ein Test der Außenseiterthese anhand eines erweiterten Gravitationsmodells (*Werner Pascha*)

**Sven Horak** Der Einfluss von kulturell relevanten Faktoren auf das Verhandlungs- und Entscheidungsverhalten in Südkorea und Deutschland *The Influence of Cultural Factors on Decision-making Behavior in Korea and Germany* (*Werner Pascha*)

**Kai Schulze** Facing the 'Rise of China': Changes in Japan's Foreign Policy Identity (*Thomas Heberer*)

**Chih-Chieh Wang** Employment Institutions and Social Economic Risk-Shifting in Taiwan (*Karen Shire*)

Pending  
Laufend

**Stephanie Bräuer** Women Social Organizations in the People's Republic of China (PRC): New forms to initiate political opportunities? A case study of anti-domestic violence (ADV) organizations in Beijing (*Thomas Heberer*)

**Sunkung Choi** Effect of Experiencing Economic Crisis on Risk Perception and Risk Attitude – A Case from South Korea (*Werner Pascha*)

**Marcus Conlé** Creating an Indigenous High-Tech Industry: An Analysis of China's Institutional Trajectory of Catch-up Development Based on a Case Study of the Biopharmaceutical Industry (*Markus Taube*)

**Magnus Dau** Social Media and their Impact on State-Society Relations in China (*Thomas Heberer*)

**Kai Duttler** Momentum, Overconfidence and Irrationality – An Experimental Study of Behavioral Puzzles in Japan (*Werner Pascha*)

**David Eichhorn** Japan's Competitive Identity (*Werner Pascha*)

**Will Hammelrath** Public Housing and Urban Development in Singapore – Ethnic Groups Between Residential Segregation and Residential Integration *Öffentlicher Wohnungsbau und Stadtentwicklung in Singapur: Ethnien zwischen residentieller Segregation und Integration* (*Winfried Flüchter*)

- Markus Heckel** Die Problematik der Unabhängigkeit einer Zentralbank am Beispiel der Bank of Japan *Issues of Central Bank Independence – The Case of Japan (Werner Pascha)*
- Peter Thomas in der Heiden** Der Beitrag chinesischer Industriepolitik zur Erhöhung der internationalen Wettbewerbsfähigkeit von Industriebranchen – Eine Untersuchung am Beispiel der chinesischen Stahlindustrie *(Markus Taube)*
- Vitali Heidt** Change of Social Security Institutions in Contemporary Japan: Effects and Influences of Institutional Change for the Rural Elderly Population *(Karen Shire)*
- Martin Heinberg** Analysis of Chinese Consumer Behavior: Value Propositions and Perceptions Determining Purchasing Decisions with Respect to Foreign and Local Consumer Good Brands *(Markus Taube)*
- Uwe Holtschneider** Adoption of Corporate Social Responsibility by Japanese Companies *(Werner Pascha)*
- Ting Huang** Dynamics of Developing Old-Age Pensions in Rural China: Role of Local Government in Policy Innovation *(Flemming Christiansen)*
- Hanno Jentzsch** Village Institutions and the Agricultural Reform Process in Japan *(Karen Shire)*
- Manja Jonas** Foreign Direct Investment as an Engine of Technological Change in Malaysia: The Role of Social Embeddedness *(Werner Pascha)*
- Alexander Klein** Steigt China auf der Wertschöpfungsleiter empor? Eine Analyse der Halbleiter- und Automobilindustrie *(Markus Taube)*
- Stephanie Krebs** Konsumentenverhalten und Verbraucherpolitik nach Fukushima *Consumer Behavior and Consumer Policy in the Aftermath of Fukushima (Working title) (Werner Pascha)*
- Alison Lamont** Risk, Marketization and Families: The Impact of Natural Disasters on Family Livelihoods – Cases from the Wenchuan Earthquake *(Flemming Christiansen)*
- Susanne Löhr** The Impact of Vertical Competition on China's Sub-Provincial Arrangements: The Reform of Direct Provincial Administration of Counties *(Thomas Heberer)*
- Jörg Mathäus** Corporate Governance in China: Eine Analyse der internen und externen Sanktionsmechanismen *(Markus Taube)*
- Stenya Melnikova** Business Risk in the Chinese Energy Sector
- Hannelore Mottweiler** Employment Change in Services in International Comparisons *(Karen Shire)*
- Armin Müller** Decentralization, Risk and Strategic Groups in China's Rural Health Reforms *(Thomas Heberer) (submitted)*
- Julia Münch (geb. Hollmann)** Die Rekrutierung von Führungsnachwuchs deutscher Unternehmen für China und Japan *The Recruitment of Future Managers by German Companies for Their China and Japan-related Activities (Werner Pascha)*
- Phillip Neuerburg** Institutional Diversity and Change in Global Value Chain Government: Implications for Enterprise Development Strategies in Developing Countries *(Werner Pascha)*
- Iva Ognjanovic** Loyalty in Organizations: The Case of Chinese Employees in a German Electrical Equipment Manufacturing Firm *(Flemming Christiansen)*
- Ann-Kathrin Prior** Risk Management and Institutional Change in China's Rural Financial Market *(Markus Taube)*
- Hans-Christian Schnack** Education for ethnic minorities in China *(Thomas Heberer)*
- Anna Shpakovskaya** The Innovation of Social Management in China – The Case of the Red Cross *(Thomas Heberer)*
- Oliver Simon** Die Reise der chinesischen Studienkommission zur Erforschung der westlichen konstitutionellen Regierungssysteme im Jahre 1906 und deren Auswirkungen auf die Rechtsrezeption und die Reformen zu Beginn des 20. Jahrhunderts in China *(Tobias Stoll, Universität Göttingen) (eingereicht)*

**René Trappel** Agrarian Change in Rural China: Commodification of Collective Land  
(*Thomas Heberer*) (*submitted*)

**Markus Tünte** Masculinity and Employment Change: A Comparison of Non-Standard Male Workers in Germany and the Netherlands (*Karen Shire*)

**Taske Ueda** Die Qualität finanzieller Informationen und deren Beeinflussung durch formale und institutionelle Variablen. Eine Analyse der Harmonisierung von Rechnungswesen und Corporate Governance in Japan (*Arbeitstitel*) (*Werner Pascha*)

**Melanie Wacker** Risks and Responsibilities – Human Security and Japan’s Ban on Landmines and Cluster Munitions as Field of Activity for Non-State Actors (*Thomas Heberer*)

**Kawai Yiu** Private Equity in China: spieltheoretische Analyse der Interessen und Akteure  
(*Markus Taube*)

**Mei Yu** Transforming Pairing Institutions for Poverty Alleviation: Mining and Corporate Social Responsibility in Fugu County, China (*Flemming Christiansen*)

## 6

**COURSES OFFERED**  
**LEHRVERANSTALTUNGEN**
**Winter Term 2012/2013**


---

**Japanese (MA)**

Sprachkurs	Intensive Japanese I, Grammar and Introductory Exercise	Beermann
Sprachkurs	Intensive Japanese I, Main Exercise and Oral Practice (1)	Ando
Sprachkurs	Intensive Japanese I, Main Exercise and Oral Practice (2)	Ando
Sprachkurs	Intensive Japanese I, Reading and Writing Practice	te Kamp
Sprachkurs	Intensive Japanese III, Grammar and Introductory Exercise	Beermann
Sprachkurs	Intensive Japanese III, Main Exercise and Oral Practice (1)	Ando
Sprachkurs	Intensive Japanese III, Main Exercise and Oral Practice (2)	Ando
Sprachkurs	Intensive Japanese III, Reading and Writing Practice	te Kamp
Kolloquium	Japanese Colloquium for Advanced Students	Beermann

**Chinese (MA)**

Sprachkurs	Intensive Chinese I	N.N.
Sprachkurs	Intensive Chinese III	N.N.

**Japanisch**

Sprachkurs	Japanisch Intensiv I	Beermann, Ando, te Kamp
Sprachkurs	Japanisch Intensiv III	Beermann, Ando

**Chinesisch**

Sprachkurs	Intermediate Chinese Reading	Du
Sprachkurs	Essays	Ulbrich
Sprachkurs	Newspapers	Wang
Sprachkurs	Chinesisch Intensiv I	Du
Sprachkurs	Chinesisch Intensiv III	Du

**Ergänzungsbereich E1**

Sprachkurs	Basic Japanese I	Sugita
Sprachkurs	Basic Japanese II (Vorkenntnisse ca. 60 UE = 4 SWS)	Sugita
Sprachkurs	Basic Japanese III Teil 1 (Vorkenntnisse ca. 120 UE = 8 SWS)	Sugita
Sprachkurs	Chinesisch I (Gruppe 1)	Sheng
Sprachkurs	Chinesisch I (Gruppe 2)	Wang
Sprachkurs	Chinesisch II (Vorkenntnisse ca. 60 UE = 4 SWS)	Wang

**Kulturgeographie/Regionale Geographie Ostasiens**

Seminar	Krisenregion Ost- und Südostasien: Geopolitische Spannungen und Konflikte aus politisch-geographischer Perspektive	Schneider
Kolloquium	Kolloquium für Diplomanden und Examenskandidaten	Schneider
Vorlesung/Seminar	Entwicklung und Unterentwicklung im Zeitalter der Globalisierung – Beiträge der geographischen Entwicklungsforschung	Schneider

**Politik und Gesellschaft Ostasiens**

Einführung/Übung	Einführung in das Studium der Ostasienwissenschaften	Klein
Vorlesung/Übung	East Asia: Social Science – Approaches and Perspectives	Christiansen
Vorlesung/Übung	Einführung in die Grundlagen und Entwicklungen der Länder Ostasiens (2)	Klein

Vorlesung/Übung	Labor Markets and Employment Institutions in Japan	Demes
Seminar	Labor Market, Work and Employment in Japan	Demes
Übung	Social Content Analysis Using Official and Media Sources	Heinrich
Seminar	Japan's Political System	Lukner
Vorlesung	Politics and Society in Japan	Lukner, Heinrich
Seminar	The International Relations and Foreign Policy of Japan	Lukner
Seminar	Social Structure, Social Identity and Social Action in Contemporary Japan	Shire
Vorlesung	Introduction to Chinese Politics	Senz
Seminar	Märtyrer, Lumpen und Helden und ihre politische Funktion. Eine vergleichende Untersuchung mit dem Schwerpunkt auf chinesische Propagandaplakate	Simon
Seminar	Die chinesische Kulturrevolution und ihre Auswirkungen auf die heutige chinesische Gesellschaft – Folgen eines Gesellschaftsexperiments	Simon
Seminar	State and Society in China: Media and Politics	Dau
Seminar	Recent Developments in the Chinese Society	Christiansen
Seminar	China's Foreign and Security Policies in the Context of East Asia	Dau
Task Force Seminar	Entwicklungspolitik und -strategien in Ostasien	Heberer, Senz
Seminar	Introduction to Comparative Sociology	Surak

### Ostasienwirtschaft

Seminar	Business Issues in Japan's Economy (a. k. a. Management in Japan)	Pascha, Eichhorn
Vorlesung	International Economic Organisation	Pascha
Vorlesung	Introduction to Business and Economic Studies on Japan	Pascha
Vorlesung	International Economic Relations and Regional Integration	Pascha, Horak
Vorlesung	Japan's Role in Global and Regional Economic Relations	Pascha, Krebs
Seminar	Japan's Economy between Market, State and Society	Pascha, Eichhorn
Übung	Methodische Fragen japanbezogener Wirtschaftsforschung	Pascha, Krebs
Kolloquium	Japan's Economy	Pascha, Krebs
Vorlesung	The Chinese Economy	Taube
Vorlesung	Applied Microeconomics	Taube, Conlé
Seminar	Business and Economy in China (Macroeconomic Developments in the Chinese Economy)	Taube, in der Heiden, Heinberg
Kolloquium	Chinese Economic Studies	Taube
Vorlesung/Seminar	Game Theory	Li
Vorlesung	North East Asia's International Economic Relations	Horak
Vorlesung	Topical Issues of the Korean Economy and Business Management	Horak
Seminar	South Korea's Economic Development Experience and Current Economic Challenges	Horak
Kolloquium	Fieldwork in East Asia	Christiansen, Heberer, Pascha, Shire, Surak, Taube

### Seminar attached to Master Thesis

Kolloquium	Current Issues of East Asian Development	Senz
------------	--	------

## Summer Term 2013

---

### Japanese (MA)

Sprachkurs	Intensive Japanese II, Grammar	Beermann
Sprachkurs	Intensive Japanese II, Practice (1)	Ando
Sprachkurs	Intensive Japanese II, Practice (2)	Ando
Sprachkurs	Intensive Japanese II, Writing	te Kamp
Sprachkurs	Advanced Japanese	Ando

**Chinese (MA)**

Sprachkurs Intensive Chinese II Liu

**Japanisch**

Sprachkurs Japanisch Intensiv II, Grammatik Beermann  
 Sprachkurs Japanisch Intensiv II, Schrift Ando  
 Sprachkurs Japanisch Intensiv II, Übung (1) Ando  
 Sprachkurs Japanisch Intensiv II, Übung (2) Ando  
 Sprachkurs Japanische Textlektüre Ando  
 Vorlesung/Übung Japanisch Intensiv IV, Grammatik Beermann  
 Übung Japanisch Intensiv IV, Übungen und Lektüre Ando

**Chinesisch**

Sprachkurs Chinesisch II Du, Wang  
 Sprachkurs Chinesisch IV Du  
 Sprachkurs Chinesisch: Vorbereitung auf die HSK-Prüfung 1 oder 2 Kang  
 Sprachkurs Chinesisch: Konversation (Vorkenntnisse ca. 90 UE = 5 SWS) Kang  
 Sprachkurs Chinesisch: Intensiv für Fortgeschrittene (Vorkenntnisse ca. 210 UE = 13 SWS) Kang  
 Sprachkurs Chinesisch: Vorbereitung auf die HSK-Prüfung 3 oder 4 Kang  
 Sprachkurs Chinesisch: Vorbereitung auf die HSK-Prüfung 5 oder 6 Kang

**Ergänzungsbereich E1**

Sprachkurs Japanisch I Sugita, Russo  
 Sprachkurs Japanisch III Sugita  
 Sprachkurs Chinesisch I Gruppe 1 Sheng  
 Sprachkurs Chinesisch I Gruppe 2 Wang  
 Sprachkurs Chinesisch II (Vorkenntnisse ca. 60 UE = 4 SWS) Wang

**Kulturgeographie/Regionale Geographie Ostasiens**

Vorlesung/Seminar Global Shift – Wirtschaftsgeographie der globalisierten Welt Schneider  
 Seminar Naturräumliche Ressourcen in Südostasien –  
 Vorkommen, Nutzung, Risiken, Interessenkonflikte Schneider  
 Kolloquium Kolloquium für Diplomanden und Examenskandidaten Schneider

**Politik und Gesellschaft Ostasiens**

Seminar Vorbereitung auf das Auslandsstudium Klein  
 Seminar Interkulturelle Kommunikation Klein  
 Vorlesung/Übung Einführung in das politische System Japans Klein  
 Vorlesung/Übung Einführung in die japanische Gesellschaft Shire  
 Seminar Institutions and Organizations in Japan Surak  
 Seminar Research on Japanese Social Institutional Change Heinrich  
 Vorlesung Einführung in das politische System Chinas Senz  
 Seminar Political Culture and Politics in China Dau  
 Hauptseminar State and Society in China Dau  
 Seminar Chinese Society Christiansen  
 Seminar Einführung in die chinesische Gesellschaft Christiansen  
 Seminar Das Verständnis vom Rechtsstaat in Deutschland und China Simon  
 Seminar China unter Mao – Gesellschaft und Wirtschaft im Ausnahmezustand Simon

**Ostasienwirtschaft**

Seminar Japanisches Management / Business Issues in Japan's Economy Pascha, Eichhorn  
 Vorlesung Einführung in die japanische Wirtschaft Pascha  
 Seminar Business Issues in Japan's Economy (a. k. a. Management in Japan) Pascha  
 Vorlesung Japan's Role in Global and Regional Economic Relations Pascha, Krebs

Vorlesung	International Economic Relations and Regional Integration	Pascha, Horak
Seminar/Kolloquium	Unternehmensplanspiel: Verhandlungssimulation	Pascha, Krebs
Vorlesung	Economic Studies on China	Taube, in der Heiden
Seminar	China Management Cases	in der Heiden, Heinberg
Vorlesung	Einführung in die chinesische Wirtschaft	Taube, in der Heiden, Heinberg

#### **Seminar attached to Master Thesis**

Kolloquium	Japan's Economy	Pascha, Krebs
Seminar/Kolloquium	Seminar attached to Thesis Writing	Christiansen
Seminar/Kolloquium	Kolloquium	Shire
Kolloquium	Chinese Economic Studies	Taube

#### **PhD Program East Asian Studies**

Kolloquium	Research Forum	Shire, Christiansen, Senz, Pascha, Surak, Taube
Seminar	Preliminary Result Workshop	Shire, Christiansen, Senz, Pascha, Surak, Taube

### **Special Teaching Activities *Neues aus der Lehre***

---

#### **Business and Economics Summer Term (BEST)**

**Werner Pascha** participated in the Business and Economics Summer Term (BEST) programme of the Mercator School of Management of UDE offered for students from abroad, which concentrates on core subjects of business techniques and economics, with special emphasis on the European Single Market and policy making in Europe. He offered a course on "European Economic Integration" for the 24 students from the US, Hong Kong and elsewhere, who visited Duisburg for several weeks in early summer.



## 7

**GUEST LECTURES, COLLOQUIA AND SYMPOSIA**  
**GASTVORTRÄGE, VORTRAGSREIHEN UND SYMPOSIEN**
**Guest Lectures *Gastvorträge***


---

- Oct. 29, 2012 **Prof. Keping Yu** (Beijing University, Center for Chinese Government Innovations): Social Innovation in China
- Nov. 7, 2012 **Prof. Ellis Krauss** (University of California San Diego and GK 1613 Guest Professor): What's Wrong with Japan? It's the Politics!
- Dec. 7, 2012 **Prof. Shukai Zhao** (Research Center of the Chinese State Council, Beijing): China's Village Reform and Local Governance. – In cooperation with the research network "Governance in China"
- Dec. 10, 2012 **Prof. L. Jeremy Clegg** and **Dr. Hinrich Voss** (University of Leeds, CIBUL): European Integration and Chinese Foreign Direct Investment in the EU.
- Apr. 24, 2013 **Prof. Margarita Estévez-Abe** (Syracuse University, USA): Institutional Change and Welfare Politics in Japan: Did Anything Change?
- Apr. 26, 2013 **Prof. Ralf Bebenroth** (Kobe University, Research Institute for Business Administration and Economics (RIEB)): Risk Behaviour of German Firms at Great East Japan Earthquake.
- May 22, 2013 **Prof. Dong Wang** (University of Turku and Senior Fellow, Käte Hamburger Kolleg for Global Cooperation Research): U.S.-China Relations: Managing Risk in the Asia-Pacific
- May 28, 2013 **Prof. Jun Yamana** (Kyoto University): Gedächtnis von Katastrophen. Architektur als Medium der Erinnerung am Beispiel des Großen Erdbebens in Kobe 1995. – Diskussion moderiert von **Dr. Franz Mauelshagen**, Kulturwissenschaftliches Institut (KWI), Essen.
- May 29, 2013 **Prof. Atsushi Kondo** (Meijo University, Japan and Visiting Professor, Oxford University): Migration and Law in Japan.
- June 12, 2013 **Prof. Lowell Dittmer** (University of California, Berkeley and GK 1613 Guest Professor): Chinese Political Morality.
- June 19, 2013 **Prof. Shaocheng Tang** (Chengchi University, Taipei): Current Development of the Cross-Strait Relations.
- June 20, 2013 **Prof. Stevan Harrell** (University of Washington, Seattle and GK 1613 Guest Professor): Native Practices, Revolutionary Policies, Erosion, and Fluvial Processes in a Mountainous Minority Community in Southwest Sichuan.
- July 3, 2013 **Prof. Saadia Pekkanen** (University of Washington, Seattle): Japan's Space Policy: From the Market to the Military.
- July 10, 2013 **Prof. Yan Chen** (University of Michigan, Ann Arbor): Which Hat to Wear? Impact of Natural Identities on Coordination and Cooperation.
- July 17, 2013 **Prof. Robert Pekkanen** (University of Washington, Seattle): How do Electoral Systems Affect Legislative Organization? Japan in Comparison.
- Aug. 29–Sept. 4, 2013 **Prof. Dr. Sven Saaler** (Sophia University, Tokyo), DAAD-sponsored short term lectureship on studying in Japan (BA program)

## Symposia and Conferences Organized by Institute Members

### *Symposien und Konferenzen*

Duisburg  
Nov. 16, 2012 **16th Duisburg East Asia Day 16. Duisburger Ostasientag**  
**Führungswechsel in China**

in Zusammenarbeit mit Alumni und Freunde der Duisburger Ostasienstudien e. V. (AlFreDO), gesponsert von der Duisburger Universitätsgesellschaft (D. U. G.).

Wie alle fünf Jahre kamen auch 2012 mehr als zweitausend ausgewählte Delegierte der Kommunistischen Partei in Beijing zu ihrem Parteitag zusammen. In diesem Jahr bildete dies den Rahmen für einen weitreichenden Wechsel in den Spitzenpositionen des Landes, wie er nur alle zehn Jahre geschieht. Sieben der neun Mitglieder des wichtigsten politischen Gremiums der Volksrepublik, des Ständigen Ausschusses des Politbüros, wurden ausgetauscht, darunter auch der Generalsekretär der Kommunistischen Partei, Hu Jintao, und Premierminister Wen Jiabao.

Der diesjährige Ostasientag widmete sich diesem Ereignis. Vor über 100 Zuhörenden wurde über die komplexen Herausforderungen diskutiert, derer sich die neue politische Führung der VR China annehmen muss. Diskussionsleiterin war **Jutta Lietsch**, zwölf Jahre lang China-Korrespondentin der taz. Am Panel beteiligt waren **Prof. Dr. Thomas Heberer**, Inhaber des Lehrstuhls Politik Ostasiens mit Schwerpunkt China am Institut für Ostasienwissenschaften, **Dr. Heinrich Kreft**, Sonderbeauftragter für den Dialog zwischen den Kulturen im Auswärtigen Amt, sowie **Dr. Alexandra Sakaki**, Wissenschaftlerin bei der Stiftung Wissenschaft und Politik (Berlin).



Duisburg  
Mar. 14, 2013 **Duisburg-Frankfurt Workshop “Institutions in the Development of East Asia”**

The seventh workshop on “Institutions in the Development of East Asia” was held in cooperation of the chairs for East Asian Economic Studies/Japan and Korea and East Asian Economic Studies/China (Prof. **Werner Pascha** and **Markus Taube**, both University of Duisburg-Essen) and Economic Institutions, Innovation and East Asian Development (Prof. **Cornelia Storz**, University of Frankfurt). In the scope of this workshop, innovative research based on institutional economic theory with focus on the explanation of regional economic characteristics was discussed. The discussion addressed two central methodological questions: Are classical theoretical approaches of economics suitable for capturing and explaining regional developments? And conversely, are aspects of local processes and structures useful for the advancement of scientific approaches and methods? The workshop, which has been previously held in cooperation with the Protestant Academy Tutzing, will be rotatively held by the participating chairs from 2013 on. A close cooperation is also established with the DFG Graduate School “Risk and East Asia“ at the University of Duisburg-Essen.

**Mark Lehrer** (Suffolk University): Globalization but not Convergence: The differing role of family firms in the German and US varieties of capitalism

**Ramona Grieb** (University of Frankfurt): CEO and Strategy: Effects of national business systems

**Taske Ueda** (University of Duisburg-Essen): Changes in Corporate Governance as the End of Employment Protection? An Empirical Study with Japanese Data

**Ann-Kathrin Prior** (University of Duisburg-Essen): Institutionelle Entwicklungen auf den ländlichen Finanzmärkten in China

Duisburg  
Sept. 22–24, 2013

### **Transfer von Institutionen**

Jahrestagung 2013 des Ausschusses für Wirtschaftssysteme und Institutionenökonomik, Verein für Socialpolitik

**Nils Goldschmidt:** Institutioneller Wandel und kulturelle Wurzeln. Grundüberlegungen zu einer kontextualen Ökonomik

Korreferat: **Thomas Döring**

**Jürgen Backhaus:** Die deutsche Wiedervereinigung und der selbst verhängte Rechtsformenmangel: Eine Bilanz nach zwei Dekaden

Korreferat: **Klaus Heine**

**Jürgen Jerger:** Institutionen und historische Grenzen

Korreferat: **Herbert Brücker**

**Carsten Herrmann-Pillath und Joachim Zweynert:** Institutionentransfer, kulturelles Unternehmertum und institutionelle Performance

Korreferat: **Heike Walterscheid**

**Markus Taube:** Institutioneller Aufbau zwischen globalem ‚institution shopping‘ und lokaler Adaption in der VR China

Korreferat: **Margot Schüller**

**Andreas Freytag:** Institutions and Savings in Developing and Emerging Economies

Korreferat: **Joachim Ahrens**

**Dirk Wentzel:** Determinants of the Emergence (and Success) of Revolutions and the Implementation of Democratic Institutions

Korreferat: **Christian Müller**

**Tim Stuchtey:** Das Gut Sicherheit und die Rolle der Sicherheitswirtschaft bei seiner Herstellung

Korreferat: **Oliver Budzinski**

## 8

PUBLICATIONS  
PUBLIKATIONEN**Birgit Apitzsch**

Skills and Recruitment in Flexible Work Settings. EUI Working Papers MWP 2012/26.

Flexibilization in The German Labor Market: Towards a Self-Directed Working Life in Germany's Media Industry? In: Hiromi Tanaka-Naji, Maren Godzik and Kristina Iwata-Weickgenannt (eds.): Beyond a Standardized Life Course. Biographical Choices about Work, Family and Housing in Japan and Germany. Tokyo: Shinyōsha, 2013: 133–157 ([http://www.dijtokyo.org/publications/beyond\\_a\\_standardized\\_life\\_course](http://www.dijtokyo.org/publications/beyond_a_standardized_life_course)).

How Personal Relations Work: Individual Market Adaptation and Collective Action in Flexible Labour Markets. In: Industrielle Beziehungen, 20(2), 2013: 116–141.

(mit Daniela Schiek) Doing Work. Atypische Arbeit in der Film- und der Automobilbranche im Vergleich. In: Berliner Journal für Soziologie, 23(2), 2013: 181–204.

**Flemming Christiansen**

Ethnic Chinese in the European Economy. Risk and the Transnational Ethnic Enclave. In: Chee-Beng Tan (ed.): Routledge Handbook of the Chinese Diaspora. London: Routledge, 2013: 139–153.

**Marcus Conlé**

China's Regional Economic Development from a National Perspective: the Case of the Biopharmaceutical Industry. In: Ingo Liefner and Yehua Dennis Wei (Hg.): Innovation and Regional Development in China. New York, London: Routledge, 2013.

**Magnus Dau**

Zeitreihenanalyse. In: Dirk Berg-Schlosser und Lasse Cronqvist: Aktuelle Methoden der vergleichenden Politikwissenschaft: Einführung in konfigurationelle (QCA) und makro-quantitative Verfahren. Opladen: UTB, 2012: 97–112.

**Stefan Derpmann**

(mit Diego Compagna) Seit 2012 Herausgeber der Paper-Reihe „Working Papers kultur- und techniksoziologische Studien (WPktS)“ (<http://www.uni-due.de/wpkts/>).

(mit Diego Compagna) Offene Horizonte: Soziologische Perspektiven auf Digital-Game und -Gaming. In: Diego Compagna und Stefan Derpmann (Hg.): Soziologische Perspektiven auf Digital-Game und -Gaming. Konstanz: UVK, 2013.

(mit Arne Maibaum) Challenged Innovation – Spiel und Simulation als Arenen der Technikentwicklung. In: Diego Compagna und Stefan Derpmann (Hg.): Soziologische Perspektiven auf Digital-Game und -Gaming. Konstanz: UVK, 2013.

Tatenlosigkeit im dauerhaften Spielgebot. In: Working Papers kultur- und techniksoziologische Studien (WPktS, hg. von Diego Compagna und Stefan Derpmann), 04/2013.

**Lun Du**

《德国儒学发展年度报告》，载《国际儒学发展年度报告》，北京：北京大学出版社，2013年。

## Winfried Flüchter

Die Tsunami- und Nuklear-Katastrophe 2011 in Japan: Der Umgang mit dem (Rest-)Risiko. In: David Chiavacci und Iris Wieczorek (Hg.): Japan-Jahrbuch 2012. Politik, Wirtschaft, Gesellschaft. Berlin, Vereinigung für sozialwissenschaftliche Japanforschung. München: Iudicium, 2012: 205–237.

Territorialisierung der Meere um Japan im Zeichen von Grenzstreitigkeiten und Nationalismus. In: Geographische Rundschau, Jg. 65, Heft 3/2013: 20–27.

## Thomas Heberer

(with Anja Senz) The Bo Xilai Affair and China's Future Development. In: Asien. The German Journal on Contemporary China, 10/2012: 78–93.

(mit Anja Senz) Die VR China im Wettstreit mit den USA: Wandel der sino-amerikanischen Beziehungen unter Obama? In: Kölner Forum für Internationale Beziehungen und Sicherheitspolitik e. V. (ed.): Transatlantische Perspektiven für die Post-Bush-Ära: Aufbruch zu neuen Ufern oder „business as usual“? (Bd. I, Kölner Beiträge zur Internationalen Politik). Köln: Wissenschaftsverlag, 2012: 343–364.

Zhongguo dangqian xingshi zhi wo jian [*Reflections on the current situation in China*]. In: Guowai Lilun Dongtai [*Foreign Theoretical Trends*], 1/2013: 61–67.

(with Gunter Schubert) Zuowei zhanlüexing qunti de xian xiang ganbu [*County and township cadres as strategic groups*], part 1. In: Jingji Shehui Tizhi [*Comparative Economic and Social Systems*], 1/2013: 83–93.

(with Gunter Schubert) Zuowei zhanlüexing qunti de xian xiang ganbu, part 2. In: Jingji Shehui Tizhi [*Comparative Economic and Social Systems*], 2/2013: 85–97.

(with Christian Göbel) The Politics of Community Building in Urban China. London, New York: Routledge, 2013 (Paperback).

Politische Reformen sind nicht zu erwarten. China nach dem jüngsten Parteitag. In: Neue Gesellschaft/Frankfurter Hefte, 7-8/2013: 65–68.

Ist China ein Entwicklungsstaat? In: Zeitschrift für Politikwissenschaft, 4/2013: 577–587.

Guanyu Zhongguo moshi ruogan wenti de yanjiu [*On some specific issues of the Chinese model*], Haijiang zai xian, [http://www.haijiangzx.com/2013/worlddds\\_0426/88783.html](http://www.haijiangzx.com/2013/worlddds_0426/88783.html).

Problems of Participation in China Today: Urban Neighbourhood Communities. In: Yves Sintomer / Rudolf Traub-Merz / Junhua Zhang (eds.): Participatory Budgeting in Asia and Europe. Key Challenges of Participation. Houndmills, Basingstoke: Palgrave-MacMillan, 2013: 145–164.

(with Anja Senz, eds.) Task-Force: Wie lässt sich die Zusammenarbeit des Landes Nordrhein-Westfalen mit China und den NRW-Partnerprovinzen vertiefen? Duisburger Arbeitspapiere Ostasienwissenschaften, 93/2013.

(with René Trappel) Evaluation processes, local cadres' behaviour and local development processes. In: Journal of Contemporary China, 6/2013 (in press).

The Contention Between Han 'Civilisers' and Yi 'Civilisees' over Environmental Governance: A Case Study of Liangshan Prefecture in Sichuan (accepted for publication by "The China Quarterly").

## Peter Thomas in der Heiden

(with Markus Taube) Development Perspectives of the Chinese Electric Vehicles. In: Heike Proff, Werner Pascha, J. Schönharting und D. Schramm (Hrsg.): Schritte in die künftige Mobilität: Technische und betriebswirtschaftliche Aspekte. Wiesbaden: Springer-Gabler Verlag, 2013.

The 12th Five Year Program for National Economic and Social Development. In: G. Heiduk and A. McCaleb (eds.): The role of openness in China's post-crisis growth strategy: Implications for the EU. Warsaw: Warsaw School of Economics Press, 2013: 15–38.

(with Heike Proff, Markus Taube, H. Hirsch, Werner Pascha, D. Kilian, S. Jeschke and Sven Horak) Competitiveness of the European Automobile Industry in the Field of Electric Vehicles. Report for the European Commission. Brussels 2013.

China's Trade in Steel Products – Evolution of Policy Goals and Instruments. In: The Copenhagen Journal of Asian Studies (31)1, 2013: 5–39.

### Sven Horak

Competitiveness of the European Automotive Industry in Electric Vehicles (2012), subproject Japan & Korea, European Union (European Commission, EU-Tender: ENTR/09/030). Project leader: **Prof. Dr. Heike Proff**. Source: [http://ec.europa.eu/enterprise/sectors/automotive/files/projects/report-duisburg-essen-electric-vehicles\\_en.pdf](http://ec.europa.eu/enterprise/sectors/automotive/files/projects/report-duisburg-essen-electric-vehicles_en.pdf).

(with Werner Pascha) Competitiveness of the Japanese and Korean Automotive Industry in Transition to Electromobility (in German). In: Heike Proff, Jörg Schönharting, Dieter Schramm und Werner Pascha (Hg.): Schritte in die zukünftige Mobilität – Technische und betriebswirtschaftliche Aspekte. Wiesbaden: Springer Gabler, 2013: 479–494.

Dissertation: The Influence of Cultural Factors on Decision Making Behavior in Korea and Germany (in German). DuEPublico, University of Duisburg-Essen, 2013, 303 pp.

### Momoyo Hüstebeck

Kommunale Selbstverwaltung im Wandel. Von zentralistischer Aufgabendurchführung zu local governance [*The Change of Local Self-Government: From Centralistic State Management to Local Governance*]. Asiatische Studien/Études Asiatiques LXVII 2, 2013: 511–540.

(mit Gesine Foljanty-Jost) Bürger, Bürgerinnen und Staat in Japan – Eine Einführung [*Citizen and State in Japan: An Introduction*]. In: Gesine Foljanty-Jost und Momoyo Hüstebeck (Hg.): Bürger und Staat in Japan [*Citizen and State in Japan*]. Halle (Saale): Universitätsverlag Halle-Wittenberg, 2013: 9–18.

Populist or Reformer? Tanaka Makiko. In: Claudia Derichs and Mark R. Thompson (Eds.): *Dynasties and Female Political Leaders in Asia: Gender, Power and Pedigree*. Politikwissenschaftliche Perspektiven 16, Berlin et al.: LIT Verlag, 2013: 321–351.

The Eternal Princess? Park Geun-hye. In: Claudia Derichs and Mark R. Thompson (Eds.): *Dynasties and Female Political Leaders in Asia: Gender, Power and Pedigree*. Politikwissenschaftliche Perspektiven 16, Berlin et al.: LIT Verlag, 2013: 353–379.

### Axel Klein

Kōmeitō – The First “Third” Force. In: Robert Pekkanen, Steven R. Reed und Ethan Scheiner (Eds.): *Japan Decides 2012*. London, New York: Palgrave Macmillan, 2013: 84–100.

Gekommen um zu bleiben? In: *Japanmarkt*, Februar 2013: 20–22.

### Yuan Li

(with Mario Gilli) A Model of Chinese Central Government: The Role of Reciprocal Accountability. In: *The Economics of Transition*, 21(3), 2013: 451–477.

### Susanne Löhr

*Review of* Christian Wuttke: Die chinesische Stadt im Transformationsprozess. Governanceformen und Mechanismen institutionellen Wandels am Beispiel des Perlflossdeltas. In: *Zeitschrift für Wirtschaftsgeographie*, No. 57, Vol. 3, 2013: 182–184.

**(with Zhang Zhanbin)** Zhongguo xinxing chengzhenhua beijing xia sheng zhi guan xian tizhi gaige – fang guojia xingzheng xueyuan jingjixue jiaoyanbu zhuren Zhang Zhanbin jiaoshou [*Direct Provincial Administration of Counties During the Process of New Type of Urbanization: Interview with Professor Zhang Zhanbin*]. In: Jingji Shehui Tizhi Bijiao [*Comparative Economic & Social Systems*], No. 6, Vol. 164: 1–12.

### **Kerstin Lukner**

**(with Alexandra Sakaki, Guest editors)** Japan's Crisis Management amid Growing Complexity: In Search of New Approaches. In: *Japanese Journal of Political Science*, Vol. 13, No. 1, 2013.

**(with Alexandra Sakaki)** Japan's Crisis Management amid Growing Complexity: In Search of New Approaches. In: *Japanese Journal of Political Science*, Vol. 13, No. 1, 2013: 83–104.

**(with Alexandra Sakaki)** Lessons from Fukushima: An Assessment of the Investigations of the Nuclear Disaster. In: *The Asia-Pacific Journal*, Vol. 11, Issue 19, No. 2, May 13, 2013, <http://japanfocus.org/-Alexandra-Sakaki/3937>.

### **Hannelore Mottweiler**

**(mit Markus Tünte)** Arbeitsmarktflexibilisierung in der Verlagsindustrie: Beschäftigungsstrategien im Spannungsfeld von Flexibilität und Stabilität. In: Joachim Hafkesbrink und Karen Shire (Hg.): *Flexibilität und Stabilität in der Verlags- und Medienbranche. Konzepte beidhändiger Unternehmensstrategien*. Lohmar: Josef Eul Verlag, 2013: 23–64.

**(mit Markus Tünte und Dzenefa Kulenovic)** Von „Kutschen“ zu „Autos“: Die Verlagsindustrie im digitalen Wandel. In: Joachim Hafkesbrink und Karen Shire (Hg.): *Flexibilität und Stabilität in der Verlags- und Medienbranche. Konzepte beidhändiger Unternehmensstrategien*. Lohmar: Josef Eul Verlag, 2013: 3–22.

### **Werner Pascha**

**(mit Heike Proff, Jörg Schönharting und Dieter Schramm; Hg.)** Schritte in die künftige Mobilität. Technische und betriebswirtschaftliche Aspekte. Wiesbaden: Springer Gabler, 2013.

**(mit Atsushi Kataoka, Regine Mathias, Pia-Tomoko Meid und Shingo Shimada; Hg.)** „Glückauf“ auf Japanisch. Bergleute aus Japan im Ruhrgebiet. Essen: Klartext, 2012.

Das deutsch-japanische Bergleuteprogramm als Fallstudie von Wirtschaftsstrukturen im Wandel. In: Atsushi Kataoka, Regine Mathias, Pia-Tomoko Meid, Werner Pascha und Shingo Shimada (Hg.): „Glückauf“ auf Japanisch. Bergleute aus Japan im Ruhrgebiet. Essen: Klartext, 2012: 67–84.

INCRA Expert Report: Japan. An Independent and Non-Profit Credit Rating of Japan. Bertelsmann Foundation 2012, pdf-Download from <http://www.bfna.org/sites/default/files/INCRA-CountryRatings.pdf>.

**(mit Sven Horak)** Wettbewerbsfähigkeit der japanischen und koreanischen Automobilindustrie im Übergang zur Elektromobilität. In: Heike Proff, Werner Pascha, Jörg Schönharting und Dieter Schramm (Hg.): *Schritte in die künftige Mobilität. Technische und betriebswirtschaftliche Aspekte*. Wiesbaden: Springer Gabler, 2013: 479–494.

**(mit Markus Taube)** Besonderheiten wirtschaftlichen Verhaltens in Ostasien – Neuere methodische Ansätze und die Rechtfertigung von Nudging. In: Martin Held, Gisela Kubon-Gilke und Richard Sturm (Hg.): *Grenzen der Konsumentensouveränität. Normative und institutionelle Grundfragen der Ökonomik*. Jahrbuch 12. Marburg: Metropolis, 2013: 225–249.

## Helmut Schneider

Metropolisierung und Umweltrisiken: Thailands Hauptstadt Bangkok und die Flutkatastrophe im Jahr 2011. In: Oraphim Bernart und Holger Warnk (Hg.): Thailand. Facetten einer südostasiatischen Kultur. München 2013: 142–172 (= Orientierungen. Zeitschrift zur Kultur Asiens. Themenheft 2012).

## Anja D. Senz

(mit Thomas Heberer, ed.) Task Force: Wie lässt sich die Zusammenarbeit des Landes Nordrhein-Westfalen mit China und den NRW-Partnerprovinzen vertiefen? Duisburger Arbeitspapiere Ostasienwissenschaften, 93/2013.

Blick von China auf die deutsche Außenpolitik. In: Zur Debatte, No. 2, 2013: 15–16.

Stabilität durch Flexibilität? Das politische System Chinas. In: Universitas, 67. Jg., Heft 11/2012 (Nr. 767): 20–33.

(with Thomas Heberer) The Bo Xilai Affair and China's Future Development. In: Asien, No. 3/2012: 78–93

Local Democracy in Germany: the Case of Rhineland-Palatinate. In: B. S. Baviskar and Ash Narain Roy (eds.): Local Governance: A Global Perspective. New Delhi: Publications Division, Government of India, 2012: 163–176.

(mit Thomas Heberer) Die VR China im Wettstreit mit den USA: Wandel der sino-amerikanischen Beziehungen unter Obama? In: Kölner Forum für Internationale Beziehungen und Sicherheitspolitik e. V. (ed.): Transatlantische Perspektiven für die Post-Bush-Ära: Aufbruch zu neuen Ufern oder „business as usual“? (Bd. I, Kölner Beiträge zur Internationalen Politik). Köln: Wissenschaftsverlag, 2012: 343–364.

## Karen Shire

(mit Joachim Hafkesbrink, Hg.) Flexibilität und Stabilität in der Verlags- und Medienbranche. Konzepte beidhändiger Unternehmensstrategien. Lohmar: Josef Eul Verlag, 2013, ISBN: 978-3-8441-0240-6.

## Kristin Surak

Making Tea, Making Japan: Cultural Nationalism in Practice. Stanford University Press 2012. (Paperback edition).

## Markus Taube

(with Holger Hirsch, Sven Horak, Peter Thomas in der Heiden, Dominik Kilian, Werner Pascha, Heike Proff) Competitiveness of the EU Automotive Industry in Electric Vehicles. Report prepared on behalf of the European Commission – DG Enterprise. Brussels, 2012. [http://ec.europa.eu/enterprise/sectors/automotive/files/projects/report-duisburg-essen-electric-vehicles\\_en.pdf](http://ec.europa.eu/enterprise/sectors/automotive/files/projects/report-duisburg-essen-electric-vehicles_en.pdf).

(with Bernhard Swoboda and Karin Pennemann) The Effects of Perceived Brand Globalness and Perceived Brand Localness in China: Empirical Evidence Regarding Western, Asian, and Domestic Retailers. In: Journal of International Marketing, Vol. 20 (2012), No. 4: 72–95.

China's Future Outward-Looking Strategy: Motives and Strategies Underlying China's Outward Foreign Direct Investment. In: Günter Heiduk and Agnieszka McCaleb (Hg.): The Role of Openness in China's Post-Crisis Growth Strategy: Implications for the EU. Warsaw: Warsaw School of Economics Press, 2012: 77–92.

China's Shadow Banking Sector – Pillar or Threat to the System? In: E. Nowotny, P. Mooslechner and D. Ritzberger-Grünwald (Hg.): European Integration in a Global Setting: CESEE and the Impact of China and Russia. Cheltenham: Edward Elgar, 2012: 189–201.



**(mit Marcus Conlé)** Zhongguo de falü, jinrong yu zengzhang beilun – Zhongguo zhenggui yu feizhenggui jinrong bumen zhong de jiedai qudao [Das chinesische Law-, Finance- & Growth-Paradox – Kreditvergabeformen in Chinas formellen und informellen Finanzdienstleistungssektor]. In: Ying Ma, Markus Taube und Dieter Cassel (Hg.): Changqi jingji zengzhang dui Zhongguo yu Ouzhou de tiaozhan [Die Herausforderung langfristigen Wirtschaftswachstums für China und Europa]. Beijing: Economic Science Publishing House, 2012: 181–196.

Huli gongying. Zhong Ou fazhan zhanlüe zai bianhua de shijie langchao zhong [Gegenseitiger Vorteil und Gewinn. Chinesisch-Europäische Entwicklungsstrategien in einer sich wandelnden Welt]. In: Deguo zhi chuang, 16. Jg., Heft 04/2012: 11.

Strategien für China und Europa in einer sich wandelnden Welt. In: China Contact, 16. Jg., Heft 11/2012: 22–23.

Relational Corruption in the PR China. Institutional Foundations and its (Dys-)Functionality for Economic Development and Growth. In: Comparative Governance and Politics (Zeitschrift für Vergleichende Politikwissenschaft), Vol. 2/2013. (Vorab-Internetpublikation bei Springer: <http://link.springer.com/journal/12286/onlineFirst/page/1>).

**(mit Werner Pascha)** Besonderheiten wirtschaftlichen Verhaltens in Ostasien – Neuere methodische Ansätze und die Rechtfertigung von Nudging. In: Martin Held, Gisela Kubon-Gilke und Richard Sturm (Hg.): Grenzen der Konsumentensouveränität. Normative und institutionelle Grundfragen der Ökonomik, Jahrbuch 12, Marburg: Metropolis, 2013: 225–249.

**(with Peter Thomas in der Heiden)** Development Perspectives of the Chinese Electric Vehicle Market. In: Heike Proff, Werner Pascha, Jörg Schönharting und Dieter Schramm (Hg.): Schritte in die künftige Mobilität. Technische und betriebswirtschaftliche Aspekte. Wiesbaden: Springer Gabler, 2013: 495–507.

Innovationsland China – Wunsch, Notwendigkeit und Realität. In: F.A.Z.-Institut (Hg.): Jahrbuch Innovation 2013. Innovationstreiber für Wirtschaft, Wissenschaft, Politik und Gesellschaft. Frankfurt am Main: F.A.Z.-Institut, 2013: 94–95.

Review of Victor Nee and Sonja Opper: Capitalism from Below. Markets and Institutional Change in China. In: ASIEN, Nr. 127, April 2013: 122–123.

China's Steel Industry. The End of Easy Growth. In: German Chamber Ticker. Business Journal of the German Chamber of Commerce in China, o. Jg., Heft 1/2013: 36–37.

## René Trappel

**(with Thomas Heberer)** Evaluation Processes, Local Cadres' Behaviour and Local Development Processes. In: Journal of Contemporary China, 22(84), 2013: 1048–1066.

## Markus Tünte

**(mit Hannelore Mottweiler)** Arbeitsmarktflexibilisierung in der Verlagsindustrie: Beschäftigungsstrategien im Spannungsfeld von Flexibilität und Stabilität. In: Joachim Hafkesbrink und Karen Shire (Hg.): Flexibilität und Stabilität in der Verlags- und Medienbranche. Konzepte beidhändiger Unternehmensstrategien. Lohmar: Josef Eul Verlag, 2013: 23–64.

**(mit Hannelore Mottweiler und Dzenefa Kulenovic)** Von „Kutschen“ zu „Autos“: Die Verlagsindustrie im digitalen Wandel. In: Joachim Hafkesbrink und Karen Shire (Hg.): Flexibilität und Stabilität in der Verlags- und Medienbranche. Konzepte beidhändiger Unternehmensstrategien. Lohmar: Josef Eul Verlag, 2013: 3–22.

## 9

LECTURES AND MEDIA PRESENTATIONS  
VORTRÄGE UND MEDIENPRÄSENTATIONEN**Yuka Ando**

Mar. 2–3, 2013 Considering a Framework for Ryukyuan Languages Teaching. – 5th International Symposium on Ryukyuan Heritage Languages, Amami (Japan).

**Birgit Apitzsch**

- Oct. 24, 2012 (mit Markus Tünte) Projektbezogene Kooperationen in den wissensintensiven Dienstleistungen. Auswirkungen auf Beschäftigung. – Präsentation, Workshop des FLEXSTRAT-Projekts, Institut Arbeit und Qualifikation (IAQ), Universität Duisburg-Essen, Duisburg.
- Jan. 28–29, 2013 Institutionen und Sektorlogik in der Kreativwirtschaft: Das Beispiel der Ausbildung in der Film- und Fernsehindustrie. – Präsentation, Workshop Matching von Innovationsfähigkeit und nachhaltigen Organisationsmodellen, Institut für Soziologie, Universität Hamburg.

**Marcus Conlé**

- June 28, 2013 (with Markus Taube) China's Regional Industrial Development from a National Perspective. – 25th Annual Conference of the Society for the Advancement of Socio-Economics (SASE), Mailand.
- July 4, 2013 Comparing China's Market Economy – A review of research strategies and findings. – 29th Colloquium of the European Group for Organizational Studies (EGOS), Sub-theme 17: Changing East Asian Business Systems, Montréal.

**Magnus Dau**

- Jan. 20, 2013 Engaging Society on Sina Weibo – the Case of Environmental Protection Bureaus. – Vortrag auf der Konferenz der Nachwuchswissenschaftler der Deutschen Gesellschaft für Asienforschung in Jena.
- Mar. 21–24, 2013 Engaging Society on Sina Weibo – the Case of Environmental Protection Bureaus. Vortrag auf der jährlichen Konferenz der Association for Asian Studies in San Diego.
- July 2–5, 2013 (mit Stephanie Bräuer) Area Studies and the Disciplines – Disjunctive Discourses? Präsentation bei der European Association for South East Asian Studies conference in Lissabon.

**Stefan Derpmann**

Dec. 12, 2012 Spielformen – Motive und Strukturen. – Vortrag im Rahmen der Reihe „n!faculty Wissenschafts-Dialog“, Köln.

**Tuong-Vi Do****Presentation in the Media Medienpräsentationen**

Nov. 13, 2012 WDR-Fernsehen, Dokumentarfilm in der Reihe „Die Heimkehrer“ über die Rückkehr der Absolventin des IN-EAST-Diplomstudiengangs Ostasienwissenschaften nach Vietnam.

**Lun Du**

June 15, 2013 Menschlichkeit (仁): Wesen und Aufgabe des Menschen. Vortrag an der Universität Trier.

July 27–28, 2013 从《尚书·周书》看“保民思想” – Vortrag bei der internationalen Tagung „Confucian Canon Studies and its Social Applications“ an der Universität Trier.

### **Winfried Flüchter**

- Oct. 30, 2012 „Fukushima“ und die Japanologie. – Deutschsprachiger Japanologentag Zürich.
- Dec. 10, 2012 Das Große Erdbeben von Ostjapan 2011 und die Optionen einer Risikogesellschaft. – Schwäbische Geographische Gesellschaft Augsburg.
- Apr. 29, 2013 Das Große Erdbeben von Ostjapan 2011 und die Optionen einer Risikogesellschaft. Geographische Gesellschaft Würzburg.
- May 7, 2013 Das Große Erdbeben von Ostjapan 2011 und die Optionen einer Risikogesellschaft. Geographische Gesellschaft zu Leipzig.
- Jan. 15, 2013 Die Dreifachkatastrophe von Japan und die Optionen einer Risikogesellschaft. Dozentenkolloquium Universität Duisburg-Essen, Katholische Akademie „Die Wolfsburg“, Mülheim an der Ruhr.

### **Thomas Heberer**

- Oct. 2, 2012 Die aktuelle politische und gesellschaftliche Situation in China. – Präsentiert bei der Internationalen DAAD-Academie “Regionalkompetenz China”, Bonn.
- Oct. 8, 2012 Chinas Entwicklungskurs, Quo vadis? – Vortrag bei Soroptimist in Essen.
- Oct. 18, 2012 Einschätzung der Situation des politischen Systems in China und Teilnahme an der Dialogveranstaltung „Chinas Gesellschaft im Umbruch“ – Präsentiert in der Staatskanzlei NRW, Düsseldorf.
- Oct. 25, 2012 Teilnahme an der Podiumsdiskussion zum Abschluss der 25. Universitätswochen „Wirtschaft, Wissenschaft und Gesellschaft in China“, Moers.
- Nov. 16, 2012 Führungswechsel in China. – Diskussion mit Dr. Heinrich Kreft (Auswärtiges Amt), Jutta Lietsch (Auslandskorrespondentin) und Dr. Alexandra Sakaki (SWP). 16. Duisburger Ostasientag.
- Nov. 20, 2012 Some reflections on the current situation in China and growth perspectives. – Keynote Speech at the ESCB Workshop “New Growth Models for China”, European Central Bank, Frankfurt am Main.
- Nov. 20, 2012 “China aktuell“: Was ist von der neuen Führung in China zu erwarten? – Vortrag und Diskussion beim Konfuzius-Institut Metropole Ruhr an der Universität Duisburg-Essen, Duisburg.
- Dec. 14, 2012 China – A Developmental State? – Presentation given at the International Conference “The State in Asia”, University of Leiden.
- Jan. 30, 2013 Modell China – wohin entwickelt sich dieses Land? – Vortrag beim China-Informationsabend für die Unternehmerschaft, Wirtschaftsförderung Wuppertal, Industriemuseum Wuppertal.
- Feb. 4, 2013 Ethnische Minderheiten in China aus politischer Sicht. – Präsentiert beim „Fokus China“ – China und seine Minderheiten zwischen Toleranz und Repression, Katholische Akademie „Die Wolfsburg“, Mülheim an der Ruhr.
- Feb. 4, 2013 Teilnahme an der Podiumsdiskussion im Rahmen der Veranstaltung „Fokus China“ – China und seine Minderheiten zwischen Toleranz und Repression, Katholische Akademie „Die Wolfsburg“, Mülheim an der Ruhr.
- Feb. 20, 2013 Modell China? – Perspektiven der gegenwärtigen Entwicklung. – Vortrag beim Deutsch-Chinesischen Industrie- und Handelsverband in Deutschland, Düsseldorf.

- Feb. 26, 2013 Gibt es ein „Modell China“? Über Besonderheiten der chinesischen Entwicklung. – Volkshochschule München.
- Mar. 2, 2013 Policy Implementation in Minority areas as Civilizing Project. – Presented at the 7th Chinese-German Dialogue on Transformation (经济社会快速转型背景下的民族多样性), Fuzhou (Pedagogical University of Fujian).
- Mar. 3, 2013 Retrospect and Perspectives (in Chinese). – Chinese-German Dialogue on Transformation (经济社会快速转型背景下的民族多样性), Fuzhou (Pedagogical University of Fujian).
- Mar. 11, 2013 County and Township Cadres as a Strategic Group. A New Approach to Political Agency in China's Local State. – Seaker Chan Center of Comparative Politics and Development Studies, Fudan University, Shanghai.
- Apr. 10, 2013 “Modell China: Wohin entwickelt sich dieses Land?“ – Vortrag bei der Rheinischen Genossenschaft des Johanniterordens, Essen.
- Apr. 12, 2013 **(with Gunter Schubert)** County and Township Cadres as a Strategic Group. – 11th European Conference on Agriculture and Rural Development in China (ECARDC), University of Würzburg.
- Apr. 12, 2013 **(with Christian Göbel)** Governed by Innovation: The Role of Local Change Agents in Local Policy Experiments. – 11th European Conference on Agriculture and Rural Development in China (ECARDC), University of Würzburg.
- Apr. 13, 2013 Chair Panel “Urban–Rural Integration (Part 2)”. – 11th European Conference on Agriculture and Rural Development in China (ECARDC), University of Würzburg.
- Apr. 19, 2013 Die Provinz Sichuan – Partnerprovinz Nordrhein-Westfalens in China. – Vortrag an der Volkshochschule Krefeld.
- June 4, 2013 The Chinese Party State, Basic Categories from the Perspective of Political Science. – Workshop “The Transformation of Political Representation in China”, Centre de science politique à l'Université Paris 8.
- June 8, 2013 China als nationale Konstruktion, ethnische Konfliktmuster und Konfliktprävention in einem Vielvölkerstaat. – Workshop „Vielvölkerstaat China. Multiethnizität und Multikulturalität in Chinas Geschichte und Gegenwart“, Universität Würzburg.
- June 13, 2013 “Modell China – Besonderheiten der gegenwärtigen Entwicklung in China“. – Vortrag bei der Jahresmitgliederversammlung des Fachverbandes für Schloss- und Beschlagindustrie, Velbert.
- Sept. 3, 2013 **(with Gunter Schubert)** County and Township Cadres as a Strategic Group. A New Approach to Political Agency in China's Local State. – Presented at the International Workshop on Local Elites in China, Dunhuang (Gansu).
- Sept. 28, 2013 Innovation and Local Governments. – Presented at the workshop “Social Management Innovations of Local Governments”, Zhejiang University, Hangzhou (in Chinese).
- Presentation in the Media Medienpräsentationen**
- Nov. 5, 2012 Radio Peking International, Thema: Politische Reformen, Parteitag.
- Nov. 8, 2012 Deutschlandfunk, Thema: 18. Parteitag.
- Nov. 8, 2012 Focus Online, Thema: 18. Parteitag.
- Nov. 8, 2012 Radio Leipzig, Thema: 18. Parteitag.
- Nov. 16, 2012 Bayerischer Rundfunk, Thema: 18. Parteitag.
- Nov. 16, 2012 WDR 5, Thema: 18. Parteitag.
- Feb. 12, 2013 Nachrichtenagentur Xinhua, Interview zu Sozialen Grundproblemen, Politischen Reformen, Zukunft der Reformen.

- Apr. 8, 2013 Rundfunkreihe „Vom Zukunftsmarkt zum Krisenherd“, Experteninterview mit Heiner Wem-  
bers.
- Apr. 29, 2013 Stuttgarter Nachrichten, Interview zur Tibetfrage.
- May 16, 2013 Dongfang Ribao, Interview zur neuen Führung in China und den Chinesisch-Europäischen  
Beziehungen.
- July 2, 2013 Pekinger Journalistin Zhu Hong, Interview zum europäisch-chinesischen Konflikt um Solar-  
anlagen und ländliche Urbanisierung.
- July 10, 2013 WDR 5 (Redezeit: China – die rätselhafte Supermacht), Interview.
- July 15, 2013 Deutschland Radio Kultur, Interview über die Probleme der gegenwärtigen Wirtschaftsent-  
wicklung in China.

### **Peter Thomas in der Heiden**

- Feb. 2013 Interview with Dow Jones Metals for an article on the development of the Chinese steel  
industry.
- Mar. 23, 2013 **(with Kathrin Dudenhöffer)** Are coordination failures stalling China's leapfrog to new  
electric vehicles. Paper presented at the 13th Annual Conference of the Association of Asian  
Studies, San Diego.
- Sept. 17, 2013 China as Driver for Electric Cars? An analysis of industry, politics and consumer accept-  
ance. – China New Energy Vehicle Industrial Development and Cooperation Forum, Beijing.

### **Vitali Heidt**

- July 12, 2013 Doitsu no kaigo hoken seido [*The German Long-Term Care Insurance System*]. – Nursing  
Department of Jichi Medical, Shimotsuke, Japan.

### **Martin Heinberg**

- Nov. 26, 2012 Marketing in China. – Private Hochschule Göttingen.
- Nov. 27, 2012 Introduction to the Chinese Economy. – Private Hochschule Göttingen.
- Dec. 14–15, 2012 Face Consciousness, Face Loss and Foreign Product Choice. – Workshop on Methods and  
Challenges in Cross-Cultural Experimental Research – Insights from Experimental Eco-  
nomics and Psychology, Duisburg.

### **Steffen Heinrich**

- June 28, 2013 **(with Margarita Estévez-Abe)** Employment-Pension Nexus in Coordinated Market Econo-  
mies: A Comparative Study of Germany and Japan since 2001. – SASE conference “States  
in crisis”, Milano.
- Aug. 29, 2013 **(with Karen Shire)** Capacity-Building of Global Unions in Mobilizing for Better Working  
Conditions for Cross-Border Temporary Agency Workers. – European Sociological Associa-  
tion Annual Conference “Crisis, critique and change”, Turin.

### **Sven Horak**

- Nov. 22, 2012 Managing Informal Relation-based Networks in Korea. – Robert Bosch Korea, Management  
Meeting, Seoul, Yongin (Korea).
- Mar. 8, 2013 Exploring the Influence of Indigenous Context Variables (ICV) on Decision Making Be-  
havior in Korea and Germany. An experimental approach. – The Peter J. Tobin College of  
Business, St. John's University, Queens, New York.

May 9–11, 2013 Cross-Cultural Experimental Economics and Indigenous Management Research – Issues and Contributions, EastAsiaNet Research Workshop, Lund University.

### **Axel Klein**

June 14, 2013 In the Beginning: How Kōmeitō came to Life. – Meiji Gakuin University, Yokohama.

### **Susanne Löhr**

Oct. 30, 2012 Conducting Fieldwork on the Reform of Direct Provincial Management of Counties. – Lecture at Sichuan University, Chengdu.

June 17, 2013 Decentralization and China. – Lecture at Utrecht University School of Law.

### **Kerstin Lukner**

Nov. 24, 2012 Jointly Facing Pandemic Risks: Japan and ASEAN. – German Association for Social Science Research on Japan Annual Conference, Political Science Working Group, Weingarten.

July 1, 2013 Zum politischen Umgang mit neuen Pandemierisiken in Asien [*On the political handling of new pandemic risks in Asia*]. – Lecture Series (Offener Hörsaal): Globalisierende Epidemien – Gesellschaftliche Wahrnehmung und Health Governance in transregionalen Verflechtungen, Freie Universität Berlin.

### **Jörg Mathäus**

Nov. 22, 2012 China im Wandel. – Vortrag im Rahmen des “Politik-Talks” im Business Club Hamburg.

Nov. 28, 2012 M&A in China und Indien. – Vorlesung im Rahmen der Internationalen Schwerpunktwoche, PFH Private Hochschule Göttingen.

Nov. 29, 2012 Tigerstaaten. – Vorlesung im Rahmen der Internationalen Schwerpunktwoche, PFH Private Hochschule Göttingen.

Dec. 14, 2012 China’s Changing Business Model of Banking. – Vrije Universiteit Amsterdam.

Jan. 22–24, 2013 China und die neue Internetwelt. – Vortrag auf der DLD München.

Feb. 19, 2013 Corporate Governance in Central and Eastern Europe. – Peking University (Běidà).

Feb. 25, 2013 The Role of Institutional Investors in Corporate Governance. – Shanghai Jiao Tong University.

Apr. 16, 2013 The Case against Uniformity in Corporate Governance. – Hong Kong Baptist University.

May 6, 2013 Takeover Market and the Agency Costs of Dispersed Control. – Vortrag im Rahmen der Veranstaltung „Global Differences in Corporate Governance Systems“, University of Birmingham.

May 31, 2013 China: Branche, Recht und Markteintritt. – Vorlesung im Rahmen der Internationalen Schwerpunktwoche, PFH Private Hochschule Göttingen.

June 10, 2013 Enforcement in Chinas Capital Market.– Frankfurt School of Finance & Management.

June 26, 2013 Chinas Versicherungsmarkt: Herausforderungen und Möglichkeiten. – Fachhochschule Köln, Institut für Versicherungswesen.

Aug. 20, 2013 Changes in Corporate Governance of German Corporations: Convergence to the Anglo-American Model. – China Securities Regulatory Commission, Beijing.

### **Presentation in the Media *Medienpräsentationen***

Jan. 30, 2013 Die Welt, Interview zum „Social Media“-Verhalten in China.

### Hannelore Mottweiler

- Oct. 3, 2012 (mit Markus Tünte und Karen Shire) Wissensintensive Dienstleistungsarbeit im Spannungsfeld stabiler Bindungen und einer neuen Unübersichtlichkeit prekärer Kommodifizierung. – Vortrag für den 36. Kongress der Deutschen Gesellschaft für Soziologie (DGS), Bochum.

### Werner Pascha

- Oct. 11–13, 2012 Session Chair “Financial Crisis and Its Regional Impact and Cooperation”, The 11th Korean-German Forum, Goseong (Republic of Korea).
- Oct. 17–18, 2012 Panelteilnehmer “Wie können institutionelle Internationalisierungsstrategien erfolgreich entwickelt und umgesetzt werden?“. – Tagung „Die Internationalisierung der Hochschulen in Japan und Deutschland – Institutionelle Strategien und operative Strukturen und Prozesse“, Hochschulrektorenkonferenz (HRK) mit JDZB und Universität Köln in Berlin.
- Nov. 14, 2012 Der Abstieg Europas – Der Aufstieg Asiens? Hat das asiatische Jahrhundert begonnen? – Gesellschaft für Wehr- und Sicherheitspolitik mit Konrad-Adenauer-Stiftung, Soest.
- Nov. 21, 2012 The Potential of FDI and Economic Integration between the Republic of Korea and the EU, Exemplified with Respect to the Role of e-mobility. – EU-Korea Public Policy Diplomacy Project Workshop, Seoul.
- Nov. 22, 2012 Rules or Consensus? Organising Regional Integration in the Light of the Euro Crisis. – Friedrich Ebert Foundation Special Lecture at Korea University, Seoul.
- Nov. 22, 2012 Reflections on Leadership Issues in European and East Asian Regional Integration. – ASEM Institute, Seoul.
- Nov. 23, 2012 Leadership Issues in Regional Integration: Europe’s Lessons for East Asia. – Conference “EU-Korea and Economic Integration of East Asia”, Korea University, Seoul.
- Feb. 2, 2013 Podiumsorganisation und -leitung: Japans Populärkultur: Ein Beitrag von Manga, Anime und Cosplay in der Kulturvermittlung? – anlässlich der Verleihung des Preises der Stiftung JaDe 2013, Köln.
- Feb. 21, 2013 EU-Korea FTA – Achievement and Challenges. – Panel statement, EU-Korea Public Diplomacy Conference, organised by EU, KU Leuven et al., Brussels.
- Mar. 8, 2013 Japan, Venice, and the Netherlands: Comparing the rise and potential fate of successful peripheral economies. – Special Lecture, Ca’Foscari University, Venice.
- Apr. 18, 2013 Panelteilnahme, 130 Jahre Deutsch-Koreanische Beziehungen: Gemeinsame Herausforderungen im „Asiatischen Jahrhundert“ – veranstaltet von Konrad-Adenauer-Stiftung, Botschaft der Republik Korea et al., Berlin.
- May 24, 2013 The Chiang Mai Process as a Case Study of Financial Cooperation in East Asia – Institutional Issues and Experiences. – Int. Conference “Currency Cooperation in East Asia”, Ludwigshafen.
- June 20–21, 2013 Weiterentwicklung der Sozialen Marktwirtschaft in Deutschland – Perspektiven für den Mittelstand, soziale Sicherungssysteme und die Wettbewerbspolitik. – 12. Deutsch-Koreanisches Forum, Goslar.
- Sept. 25, 2013 Rules or Consensus? Organizing Regional Integration in the Light of the Euro Crisis. – Special Lecture at Pukyong National University, Busan (Korea).

### Helmut Schneider

- Nov. 27, 2012 Verschärfte Umweltkonflikte in Südostasien? Der Nutzungskonflikt um eine innerstädtische Wasserfläche in Phnom Penh/Kambodscha als Fallbeispiel. – Vortrag Geographisches Kolloquium der Universität Göttingen.

**Anja D. Senz**

- Oct. 18, 2012 Blick von außen auf die deutsche Außenpolitik: Beispiel China. – Kath. Akademie in Bayern, München.
- Oct. 23, 2012 Chinesische Kultur zwischen Kreativität, Kommerz und Propaganda. – VHS Dorsten.
- Nov. 14, 2012 Leadership Change in China. – China Round Table, Europaparlament, Brüssel.
- Nov. 20, 2012 China Aktuell: Was ist von der neuen Führung in China zu erwarten? – Podiumsdiskussion, Moderation, Universität Duisburg-Essen.
- Nov. 29, 2012 China als aggressive Weltmacht, China als Geldgeber der westlichen Welt? – VHS Kassel.
- Jan. 11, 2013 Korruption als Mittel des Machtkampfes in China? – Universität zu Köln.
- Feb. 4, 2013 China und seine Minderheiten – zwischen Toleranz und Repression. – Kath. Akademie „Die Wolfsburg“, Mülheim an der Ruhr.
- Feb. 7, 2013 Chinesische Kunst und Kultur zwischen Kommerz, Zensur und Kreativität. – VHS Kassel.
- Feb. 18, 2013 Auswärtige Kulturpolitik: Das Beispiel China und Konfuzius-Institute. – Institut für Auslandsbeziehungen, Stuttgart.
- Feb. 26, 2013 Weltmacht China – Partner oder Rivale? – VHS Coesfeld.
- Mar. 5, 2013 China – Partner oder Angstgegner? Einschätzungen zur sozialen und kulturellen Lage. – Bonner Akademie für Forschung und Lehre praktischer Politik.
- Apr. 4, 2013 China und seine Gerechtigkeitsfragen. – Kath. Akademie „Die Wolfsburg“, Mülheim an der Ruhr.
- Apr. 13, 2013 China nach dem Führungswechsel. – Heinrich Böll Stiftung, Berlin.
- May 6, 2013 Wer bestimmt in Chinas Dörfern? – Stiftung Demokratie Saarland, Saarbrücken.
- May 22, 2013 China und der Brennpunkt koreanische Halbinsel. – Universität Duisburg-Essen.
- May 29, 2013 Institutionenwandel und dörfliche Entscheidungsstrukturen in China. – Universität Heidelberg.
- June 5, 2013 Transatlantische Sicherheit in Zeiten des ‚global power shift‘ – die Auswirkungen für Europa. – Bundesakademie für Sicherheitspolitik, Bundessicherheitsakademie Berlin.
- June 6, 2013 Einsatzbereit? Chinas Flugzeugträger und Stealth-Kampfflugzeuge auf dem Prüfstand. – Moderation, Trierer China-Gespräche, Berlin.
- June 10, 2013 Wie stabil ist China? Fallbeispiel soziale Ungleichheit. – Karl-Arnold-Stiftung, Königswinter.
- July 5, 2013 Rural governance in China: the example of village elections. – Torino World Affairs Institute, Turin.
- July 8, 2013 Herausforderungen der neuen chinesischen Führung. – FU Berlin.
- July 9, 2013 Fighting Corruption in China. – Madariaga College of European Foundation, Brüssel.
- July 11, 2013 Beijing nach dem Führungswechsel – aktuelle Herausforderungen und Probleme. – Düsseldorf.
- July 17, 2013 China – Herausforderungen des Modernisierungsprozesses. – Universität Duisburg-Essen.
- July 21, 2013 Kunst in China – Spielräume und Grenzen. – Sommerakademie Dinslaken.
- July 22, 2013 Chinas Parteistaat im Dilemma zwischen Regelsetzung und -umgehung. Zum Institutionenwandel am Beispiel von Dorfverwaltung, Korruptionsbekämpfung und Umweltpolitik. – Universität Heidelberg.
- Aug. 22, 2013 Transboundary river basins as regional commons and hydroelectric dam constructions in Eastern Himalaya. – Faculty of Political Science, Chulalongkorn University, Bangkok.
- Aug. 28, 2013 Cross-boundary water resource management in a non-cooperative context: the case of Eastern Himalaya. – BPBA, Dhaka.



- Aug. 30, 2013 Regional cooperation among states and civil society organisations on trans-boundary river basins: the example of the Brahmaputra. – Institute of Social Sciences, Neu-Delhi.
- Sept. 5, 2013 Cross-boundary water resource management in a non-cooperative context: the case of Eastern Himalaya. – European Consortium of Political Research, Bordeaux.
- Sept. 17, 2013 Modernisierung und soziale Verwerfungen in China: Wie stabil ist die Weltmacht im Werden? – Karl-Arnold-Stiftung, Königswinter.
- Sept. 17, 2013 Das politische Herrschaftssystem der VR China: Strukturen, Personen, Prozesse. – Karl-Arnold-Stiftung, Königswinter.
- Sept. 19, 2013 Cultural organizations and mutual learning: China–Europe. – Clingendael Netherlands Institute of International Relations, Den Haag.
- Sept. 27, 2013 Chinas Wandel seit Einleitung der Reform- und Öffnungspolitik: Politik, Wirtschaft, Gesellschaft. – Universität Duisburg-Essen.

#### **Presentation in the Media *Medienpräsentationen***

- Oct. 2, 2012 Phoenix-Runde: Die überforderte Weltmacht? – China zwischen Aggressivität und Diplomatie.

#### **Karen Shire**

- Oct. 3, 2012 **(mit Markus Tünte und Hannelore Mottweiler)** Wissensintensive Dienstleistungsarbeit im Spannungsfeld stabiler Bindungen und einer neuen Unübersichtlichkeit prekärer Kommodifizierung. – Präsentation zum 36. Kongress der Deutschen Gesellschaft für Soziologie, Ruhr-Universität Bochum & TU Dortmund.
- Oct. 13, 2012 International, Comparative and Transnational Perspectives on Temporary Agency Work. – Invited Lecture, Centre for Social Stratification and Social Inequality (CSSI), Tohoku University, Sendai.
- Mar. 25, 2013 Discourses of Labor Market Inequalities. – Invited Lecture to the Workshop “Inequality in Post-Growth Japan: Social Transformation during Economic and Demographic Stagnation”, German Institute of Japan Studies, Tokyo, March 25, 2013, and in revised form at the Annual Meetings of the German Association for Social Science Research on Japan, at the Japanese German Center Berlin.
- May 1, 2013 Beyond the Flexibility Divide: Internal Labor Markets and External Workers in Knowledge-Intensive Service Work. – Invited Lecture to the “New Deals in the New Economy”, Project at the Department of Sociology, National University of Ireland, Maynooth.
- May 21, 2013 ‘Subjective Turn’ in der Sozialstrukturanalyse. – Keynote Address im Rahmen der Jubiläumsveranstaltung 125. Geburtstag Werner Reimers und 50 Jahre Werner Reimers Stiftung, Bad Homburg.
- June 27, 2013 The Link between Industrial and Social Citizenship in East Asia. – Panel “The Real Varieties of Welfare Capitalism in East Asia and New Challenges”, Society for the Advancement of Socio-Economics (SASE) Annual Meetings, Milano.
- Aug. 29, 2013 Gender and the End of Employment Protections in Coordinated Market Economies: Germany and Japan in Comparison. – European Sociological Association, Turin.
- Aug. 29, 2013 **(with Steffen Heinrich)** Capacity Building of Global Unions in Mobilizing for Better Working Conditions for Cross-Border Temporary Agency Workers. – RN17: Work, Employment and Industrial Relations, European Sociological Association, Turin.

#### **Kristin Surak**

- Oct. 2, 2012 Ethnicity in Everyday Life: Modalities of Ethnonational Categorization in Practice. – Plenary Session, German Sociological Association Annual Meeting, Bochum.

- Apr. 6, 2013 Co-Prosperity Through a Bowl of Tea. The Politics of Materiality. – New School of Social Research, New York.
- Apr. 2013 Why Japan Doesn't Have Guest-workers. – London Migration Research Group, SOAS, University of London.
- May 2013 Re-Making Japanese Tea: A Look at Institutions. – Research Colloquium for the Study of Social Organizations, Berlin Technical University.

### **Markus Taube**

- Oct. 4, 2012 Chinas Einbindung in die Weltwirtschaft. – Vortrag im Rahmen des EMBA Business Integration ausgerichtet von der Julius-Maximilian-Universität Würzburg.
- Oct. 12, 2012 Engaging in Global Competitive Dynamics: Europe's Relations with the Emerging Actors. – Round table podium discussion at the Annual Convention of the AeroSpace and Defence Industries Association of Europe, Lisbon.
- Oct. 15, 2012 Global Governance: Das wirtschaftliche Gewicht Chinas. – Vortrag im Rahmen des ISWA-Politikseminars „Ein globaler Ordnungsrahmen für die internationalen Märkte – Welche Interessen hat die deutsche Wirtschaft“, ausgerichtet vom Bundesverband der Deutschen Industrie e. V. (BDI), Berlin.
- Oct. 18, 2012 Vom „nachholenden Wachstum“ zur globalen Technologieführerschaft? – Anspruch und Wirklichkeit des chinesischen Projekts ‚Elektromobilität‘. – Vortrag auf den 25. Universitätswochen in Moers „China – Wirtschaft, Wissenschaft, Weltmacht“, ausgerichtet von der Sparkasse am Niederrhein Moers.
- Nov. 3, 2012 A Game-theoretic Analysis of Guanxi-networks in a Changing Socio-economic Environment. – Presentation at the 29th Euro-Asia Management Studies Association (EAMSA) Annual Conference, Singapore.
- Nov. 15, 2012 Chinas Wirtschaft im internationalen Umfeld. – Seminartag im Rahmen des China Manager IHK Feldkirchen-Westerham.
- Nov. 20, 2012 Der chinesische Führungswechsel aus ökonomischer Sicht. – Beitrag im Rahmen der Podiumsdiskussion „Was ist von der neuen chinesischen Führung zu erwarten?“, ausgerichtet vom Konfuzius-Institut Metropole Ruhr, Duisburg.
- Dec. 6, 2012 The Chinese Economy after the Leadership Change: Impact on Chinese Domestic Policies and on the World Economy. – Round table podium discussion organized by Madariaga College of Europe Foundation and the European Commission Committee of the Regions. Brussels.
- Mar. 1, 2013 Rising China: ‚Wirtschaftswunder‘ und Management-Herausforderung. – Vortrag auf dem Landesvorbereitungssseminar China, veranstaltet von dem Landesspracheninstitut Nordrhein-Westfalen, Bochum.
- Mar. 13, 2013 China 2.0 – der Drache zieht seine Bahn. – Vortrag auf der Unternehmerveranstaltung „Giganten der Weltwirtschaft im Wandel“, veranstaltet von der Kreissparkasse Waiblingen und der Alfred Kärcher GmbH & Co. KG, Winnenden.
- Apr. 24, 2013 China's Economy in 2013. The Quest for New Engines of Growth. – Vortrag bei der Infineon Technologies AG, München.
- Apr. 25, 2013 Chinas Volkswirtschaft und ihr Automobilsektor – Weichenstellungen für kontinuierliches Wachstum. – Vortrag an der Volkswagen AG AutoUni, Wolfsburg.
- May 5, 2013 The Chinese Economy at the Cross Roads – A New Growth Paradigm in the Making? – Presentation at the World Semiconductor Trade Statistics – WSTS Spring 2013 Committee Meeting, Cologne.
- June 13, 2013 ASEAN – Die nächste Herausforderung nach China. – Vortrag auf der K-P Managementkonferenz 2013 der Volkswagen AG, Stuttgart.

- June 27, 2013 Gewinner der Globalisierung? Der wirtschaftliche Aufstieg Asiens und insbesondere Chinas. – Vortrag auf dem Seminar „Aktuelle Fragen der Wirtschafts- und Sozialpolitik“ der Akademie für Politische Bildung Tutzing.
- June 28, 2013 China's Regional Industrial Development from a National Perspective. – Presentation at the Society for the Advancement of Socio-Economics (SASE) 25th Annual Conference, Milan.
- July 5–6, 2013 Globalisierung der Märkte – Fokus Nord-Amerika & Asien. – Seminartage im Rahmen der Qualifizierungsmaßnahme „Interdisziplinäres Qualifizierungsprogramm“ der ThyssenKrupp Steel AG, Duisburg.
- July 11, 2013 Chinas Wirtschaft im internationalen Umfeld. – Seminartag im Rahmen des China Manager IHK Feldkirchen-Westerham.
- July 16, 2013 Chinesische Förderprogramme für Elektromobilität und Kooperation mit ausländischen Forschungseinrichtungen. – Vortrag auf dem Fachgespräch: Neue Impulse in der chinesischen Innovationspolitik? der „Deutsch-Chinesischen Plattform Innovation“, ausgerichtet vom Bundesministerium für Bildung und Forschung (BMBF), Berlin.
- Sept. 23, 2013 Aufbau einer marktwirtschaftlichen Ordnung in der VR China. Globales ‘institution shopping’, lokale Adaption und kreative Schöpfung. – Vortrag auf der Jahrestagung des Ausschuss für Wirtschaftssysteme und Institutionenökonomik des Vereins für Socialpolitik, Duisburg.

#### **Presentation in the Media *Medienpräsentationen***

- Apr. 4, 2013 ARD Tagesschau/Tagesschau24, Interview zu den Hintergründen von Klagen über angebliche Qualitätsmängel ausländischer Hersteller in China
- Apr. 12, 2013 Deutsche Welle TV, Interview zu den ökonomischen Implikationen einer Eskalation des Nordkoreakonflikts (deutsch- und englischsprachiges Format)
- June 25, 2013 Deutschlandradio Kultur, Interview zur aktuellen Zentralbankpolitik und Angst einer Liquiditätsverknappung in der chinesischen Volkswirtschaft
- Aug. 5, 2013 Deutsche Welle TV, Interview zu konjunkturellen und wirtschaftspolitischen Entwicklungen in China (deutsch- und englischsprachiges Format)

#### **René Trappel**

- Apr. 11–13, 2013 Fading out Peasant Agriculture in Rural China: The Role of Township and County Administrations in Agrarian Change. – ECARDC XI, Würzburg.

#### **Markus Tünte**

- Oct. 3, 2012 **(mit Hannelore Mottweiler und Karen Shire)** Wissensintensive Dienstleistungsarbeit im Spannungsfeld stabiler Bindungen und einer neuen Unübersichtlichkeit prekärer Kommodifizierung. – Vortrag für den 36. Kongress der Deutschen Gesellschaft für Soziologie, Bochum.
- Oct. 24, 2012 **(mit Birgit Apitzsch)** Projektbezogene Kooperationen in den wissensintensiven Dienstleistungen. Auswirkungen auf Beschäftigung. – Vortrag für den Abschlussworkshop des FLEX-STRAT-Projekts, Duisburg.
- May 1–2, 2013 **(mit Karen Shire)** Beyond the Flexibility Divide: Internal Labor Markets and External Workers in Knowledge-Intensive Service Work. – Vortrag für die Konferenz „Understanding the Changing Worlds of Capitalism: New Perspectives on the Political Economy of Work, Production and Employment Regimes“; Research Conference and Workshop, Renehan Hall, NUI Maynooth (Irland).

## 10

**PROFESSIONAL ACTIVITIES**  
*EHRENAMTLICHE TÄTIGKEITEN*
**Flemming Christiansen**

Editor, Journal of Current Chinese Affairs, GIGA, Hamburg

Member of the Editorial Board of the following journals: China Information (Leiden), Asian Politics and Policy (Washington and Beijing), Journal of Agrarian Change (London) and of the following book series: Chinese Worlds (Routledge)

Honorary Fellow, White Rose East Asia Centre, Universities of Leeds and Sheffield

External examiner for the History Department, University of Cardiff.

**Helmut Demes**

Member of the Board, Euro-Asia Management Studies Association (EAMSA)

**Lun Du**

President of the German Confucian Society (Deutsche Konfuzianische Gesellschaft e.V., DKG)

Board member of the International Confucian Association (ICA), Beijing

**David Eichhorn**

Member of the Board of the Koordinationsstelle für Praktika (KOPRA) e. V.

**Winfried Flüchter**

Member of the scientific council of the German Journal of Economic Geography /  
*Mitglied des wissenschaftlichen Beirats der Zeitschrift für Wirtschaftsgeographie*

Member of the selection commission of the Association of the Promotion of German-Japanese Cultural Relations (JaDe), Cologne *Mitglied der Auswahlkommission des Fördervereins Deutsch-Japanische Kulturbeziehungen (JaDe), Köln*

**Thomas Heberer**

Member of the Editorial Board, The China Quarterly (since 8/2011)

Member of the Editorial Committee, European Journal of East Asian Studies

Member of the Editorial Board, Journal of China in Comparative Perspective, London School of Economics

Member of the Academic Advisory Committee, China in Comparative Perspective Network

Member of the Academic Advisory Board, Journal of Current Chinese Affairs

Member of the Academic Advisory Board, Internationales Asienforum

Member of the Academic Committee of the Dr. Seaker Chan Center for Comparative Political Development Studies at Fudan University, Shanghai

Member of the Board, Institute for Peace and Development (INEF), Duisburg

Member of the Curatorium, Asia Foundation Essen

Co-editor of the book series East Asia in the 21st Century, Verlag für Sozialwissenschaften

Co-editor of the series Ostasien-Pazifik. Trierer Studien zu Politik, Wirtschaft, Gesellschaft, Kultur

Co-editor of the series Schriftenreihe zur Ostasienforschung

Cologne Forum of International Relations and Security Policies, Member of the Academic Advisory Board

Member of the Academic Advisory Council, Institute of European Studies, Nankai University, Tianjin, Adjunct Professor, Zhongguo Renmin Daxue (Chinese People's University), Beijing

Adjunct Professor, Nankai University, Tianjin

Adjunct Professor, Zhejiang University, Hangzhou

Senior research fellow, Beijing Academy of Social Sciences

Co-Director, Confucius Institute Metropolis Ruhr, Duisburg

Affiliated professor of the Heinrich Böll Foundation at the University of Duisburg-Essen

Member of the Editorial Committee of the annual yearbook *Ethnic Minorities: Annual Social and Economic Indicators* (Routledge)

### **Peter Thomas in der Heiden**

Member of the Board and treasurer of the Koordinationsstelle für Praktika (KOPRA) e. V.

Member of the China Postgraduate Network, the Association of Asian Studies, the Deutsche Gesellschaft für Asienkunde, and the International Studies Association

### **Axel Klein**

Managing Editor, *Contemporary Japan – Journal of the German Institute for Japanese Studies*, Tokyo (until Aug. 2013)

Member of the Editorial Board, *Japan Forum*

### **Kerstin Lukner**

Speaker, Political Science Working Group, German Association for Social Science Research on Japan

Peer Reviewer, *Pacific Affairs und Japan Jahrbuch [Annual Yearbook on Japan]*

### **Werner Pascha**

Member of the Editorial Committee, *European Journal of East Asian Studies*

Co-Editor in Chief, *Asia-Europe Journal*, published by Springer

Editorial Advisory Board member, *Journal of Korea Trade*

Advisor on University relations, German-Korean Society

Vice-President of the German-Japanese Society of the Lower Rhine, Düsseldorf

Member of the Committee for Economic Systems and Institutional Economics, Verein für Socialpolitik (*German Association for Economic Studies*)

Member, Korean-German Forum, advising the German and South Korean governments

Board Member, Institute of Development and Peace (INEF) of the University of Duisburg-Essen

Steering group member and executive board member of EastAsiaNet, the European Research School Network of Contemporary East Asian Studies

Co-editor of the book series *Economic Studies on Asia*, Metropolis Publishing Co., Marburg

Vice-Chairman of the Research Institute on Economic Developments in the Pacific Region (FIP e. V.)

Member of the selection committee for *Sprache und Praxis in Japan* of the German Academic Exchange Service (DAAD)

Honorary President, KOPRA e. V. (NPO)

Chairman of the Board of JaDe, the Japanese-German Society of Cultural Relations

Member of selection and promotion committees at Aarhus University, at Ca' Foscari University, Venice, and at the Illinois Institute of Technology, Chicago

### **Alexandra Sakaki**

Member of the Editorial Board at the Journal Weekly Digest – German Foreign Policy in Focus, University of Trier

### **Helmut Schneider**

Editorial Management (*Schriftleitung*), Zeitschrift für Wirtschaftsgeographie (*Journal of Economic Geography*)

### **Anja Senz**

Managing Director of the Confucius Institute Metropolis Ruhr, Duisburg

Adjunct Professor at the Institute of Political Science, University of Duisburg-Essen

Visiting Professor at the University of Torino

Member of the Expert Advisory Board of the Heinrich-Böll-Stiftung, Berlin

Member of the Europe-China Research and Advise Network (ECRAN), Brussels

Member of the Research Team New Multilateralism on the Global Age at Torino World Affairs Institute

Co-Editor of The China Companion, Online Research Network, Torino

### **Karen Shire**

Member and Vice-Director, University Board of Councillors (*Hochschulrat*), University of Duisburg-Essen (re-elected for a second four-year term of office, re-elected as Vice-Director)

Chair, Advisory Board, Bremen International Graduate School of Social Sciences, University of Bremen (German Excellence Initiative)

Affiliated Professor (*Vertrauensdozentin*), Hans Boeckler Foundation, scholarship programs

Member, Yale Society for Comparative Studies, Yale University, New Haven, USA

Board Member, RC 02 Economy and Society, International Sociological Association

Advisory Board, Institute of Advanced Studies in the Humanities (KWI Essen)

Juror, International Research Prize, Max Weber Foundation

International Editorial Board, Work, Employment and Society of the British Sociological Association

Chairperson, Scientific Advisory Board of the DFG sponsored Sondersammelgebiet Sozialwissenschaften housed at the University of Cologne.

International Advisory Board of the White Rose East Asia Centre, funded by the Arts and Humanities Council at the Universities of Leeds and Sheffield

### **Markus Taube**

Co-Director, Confucius Institute Metropolis Ruhr

Gutachterliche Mitwirkung an Akkreditierungsverfahren an folgenden Hochschulen: Hochschule für Wirtschaft und Recht Berlin, Universität Göttingen, Fachhochschule Ludwigshafen

Mitwirkung an dem Habilitationsverfahren „Zhu Jiaming“ an der Universität Wien

Externe Gutachtertätigkeiten für: Studienstiftung des deutschen Volkes, Stiftung Mercator

### **Toshi Yamada**

Board Member of the Arbeitskreis Japan-Bibliotheken

## 11

**STUDY AND RESEARCH VISITS TO EAST ASIA**  
*STUDIEN- UND FORSCHUNGSaufenthalte in OSTASIEN*
**Thomas Heberer**

- Feb.–Mar. 2013 Research Stay at Zhejiang University and the Institute of Nationalities Research Xichang/Sichuan
- Aug.–Oct. 2013 Visiting Scholar, Zhejiang University, Hangzhou; Field Research in Enshi/Hubei and Wenzhou/Zhejiang

**Vitali Heidt**

- Sept.–Dec. 2012 Interviews and participant observation in Tokyo
- Mar.–Aug. 2013 Interviews and participant observation in Komagane and Tokyo

**Martin Heinberg**

- Mar./Apr. 2013 Experiments conducted at Nankai University, Tianjin

**Axel Klein**

- Oct. 11–18, 2012 Negotiations with several partner universities in Japan
- Dec. 7–19, 2012 Japan & China (Wuhan, Shanghai); Negotiations with several partner universities in Japan; field research in Tokyo and Saitama;
- June 8–16, 2013 Negotiations with several partner universities in Japan; field research in Tokyo and Fukuoka;
- Sept. 19–Oct. 2, 2013 Negotiations with several partner universities in Japan; field research in Kyoto, Fukuoka and Tokyo

**Susanne Löhr**

- Sept.–Nov. 2012 Research on the provincial management of counties and the decentralization of economic powers to counties in Guangzhou, Chengdu and Beijing (funded by the DFG Research Training Group 1613)

**Werner Pascha**

- Sept. 2013 Visiting Professorship and field research at Busan National University, Busan (Republic of Korea)

**Anja Senz**

- Aug. 21–Sept. 4, 2013 Forschungsaufenthalt in New Delhi (Indien) und Dhaka (Bangladesch) für das Projekt „Regionales Konfliktmanagement durch den Ausbau subnationaler Kooperation? Konflikt-dynamik und Mehrebenen-Diplomatie in der Grenzregion Nordostindien–China–Bangladesch–Myanmar“ (DAAD-gefördert)

**Karen Shire**

- Oct. 6–20, 2013 Guest Researcher, Center of Social Stratification and Social Inequalities, Tohoku University, Sendai. Series of lectures on Globalization and Inequality and Comparative Studies of Transnational Labour Markets for Temporary Labour, Research on the Social Effects of the Tohoku Earthquake and Field Visits to Recovering Regions
- Mar. 16–21, 2013 Conference Participation and Final Negotiation of Cooperation Agreements for the GRK 1613 with the University of Tokyo, Inter-faculty Initiative in Information Studies, Tokyo

**Kristin Surak**

- Mar. 2013 Research Visit to East Asia



The library of the Institute of East Asian Studies is integrated as East Asia collection in the University Library, and therefore applies its regulations for use, acquisition policy and budget requirements of the university library.

The library collections reflect the contemporary relevance and interdisciplinary nature of East Asian Studies. The main collection areas are politics, society, economy, geography, modern history, culture and the modern languages of the regions of China and Japan. At present, the East Asian collection holds about 30,000 monographs and more than 500 periodicals, including 140 ongoing subscriptions. Since the focus of the Institute has moved in the last times, we have in this reporting period exchanged some ongoing subscriptions.

The total holdings of the East Asia collection are recorded in the electronic cataloging network of University Libraries of North Rhine-Westphalia and can be retrieved from the OPAC of the University Library ([http://primo.ub.uni-due.de/primo\\_library/libweb/action/search.do?vid=UDE](http://primo.ub.uni-due.de/primo_library/libweb/action/search.do?vid=UDE)).

The parallel cataloging of Japanese monographs in NACSIS-CAT (Japanese Union Catalogue), hosted by the National Institute of Information in Japan, has been continued, using the original characters. With the help of the Chinese and Japanese characters, approximately 5,340 of our Japanese titles can be found in CiNii Books (<http://ci.nii.ac.jp/books>), and also in the European Union Catalogue of Japanese Books (<http://www.niicat.eu>).

The University Library has a number of subject-oriented databases. Academic staff and students may access them via PC.

The library of the IN-EAST is also working with various international and national libraries through which both the staff and the students have opportunities to use the shared licensed databases directly from Asia and delivery of journal articles as needed (e. g. CrossAsia – <http://crossasia.org>).

Many Chinese articles and texts can be downloaded. Concerning Japanese articles, the institute has completed an agreement with the National Diet Library in Japan, so that you can order on demand journal articles in Japan. Since the National Diet Library has been building its collections mainly by the legal deposit of Japanese publications (Legal Deposit System), this cooperation is most valuable for our research.

In this reporting period, we have had two large donations, one for the Chinese and one for the Japanese sector. Both complete our stocks excellent.

**Duisburg Working Papers on East Asian Studies**  
*Duisburger Arbeitspapiere Ostasienwissenschaften*

Since July 1995 the Institute has published its own working paper series, the so-called “Green Series” (*Grüne Reihe*), a limited number of which are available free of charge. Most papers in the series can be accessed via Internet, they are listed on the IN-EAST website at <http://www.in-east.de> → Publications.

Between October 2012 and September 2013 the following papers were published.

- No. **91** / 2013 **Jann Christoph von der Pütten, Christian Göbel (Hg.):**  
Task Force: Gewerkschaften, Arbeitsmarktregulierung und Migration in China
- No. **92** / 2013 **Sven Horak:**  
Cross-Cultural Experimental Economics and Indigenous Management Research – Issues and Contributions
- No. **93** / 2013 **Thomas Heberer, Anja Senz (Hg.):**  
Task Force: Wie lässt sich die Zusammenarbeit des Landes Nordrhein-Westfalen mit China und den NRW-Partnerprovinzen vertiefen?
- No. **94** / 2013 **Heather X. Zhang, Nicholas Loubere:**  
Rural Finance, Development and Livelihoods in China
- No. **95** / 2013 **Yasuo Saeki, Sven Horak:**  
The Role of Trust in Cultivating Relation-specific Skills – the Case of a Multinational Automotive Supplier in Japan and Germany