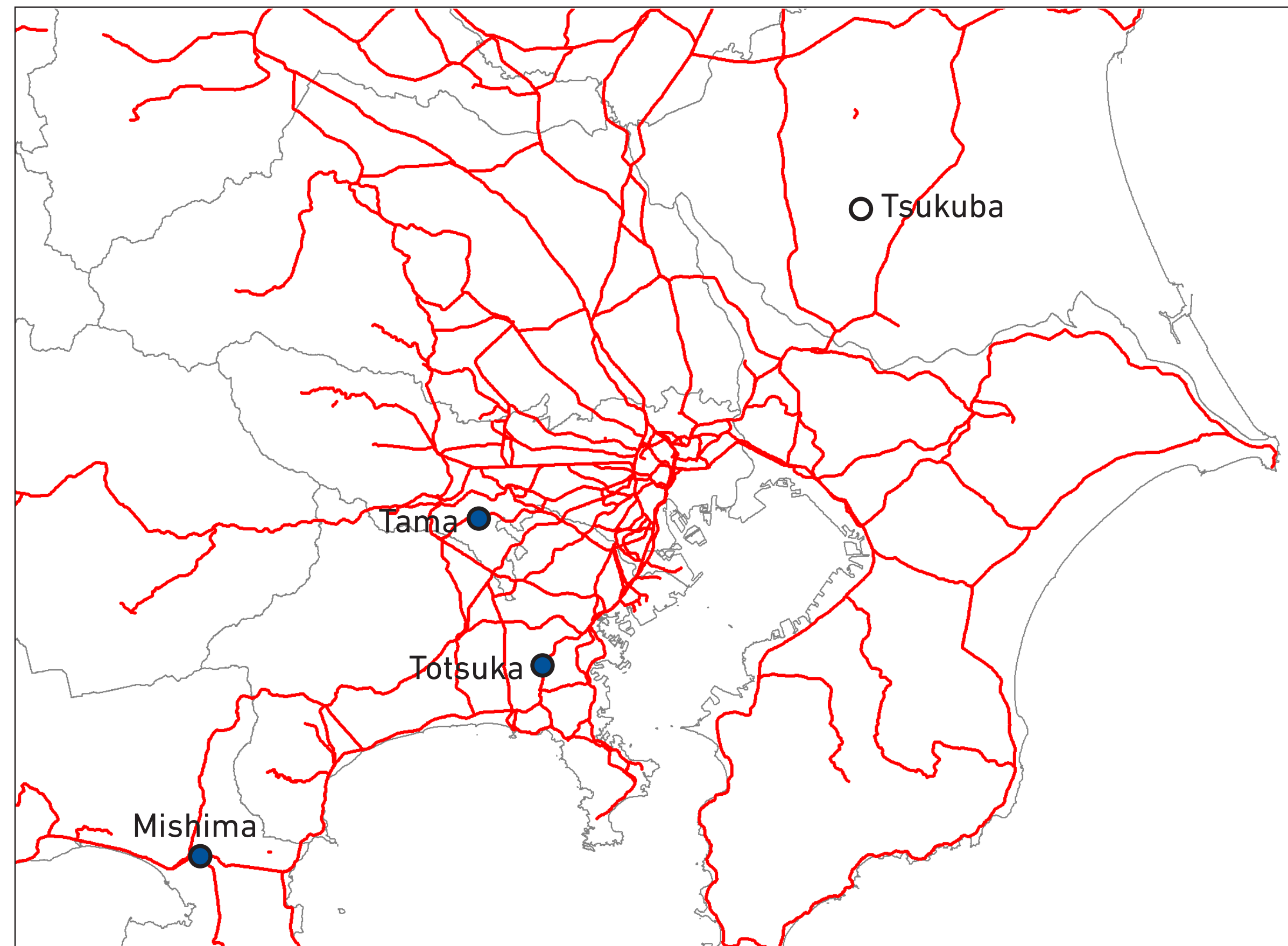
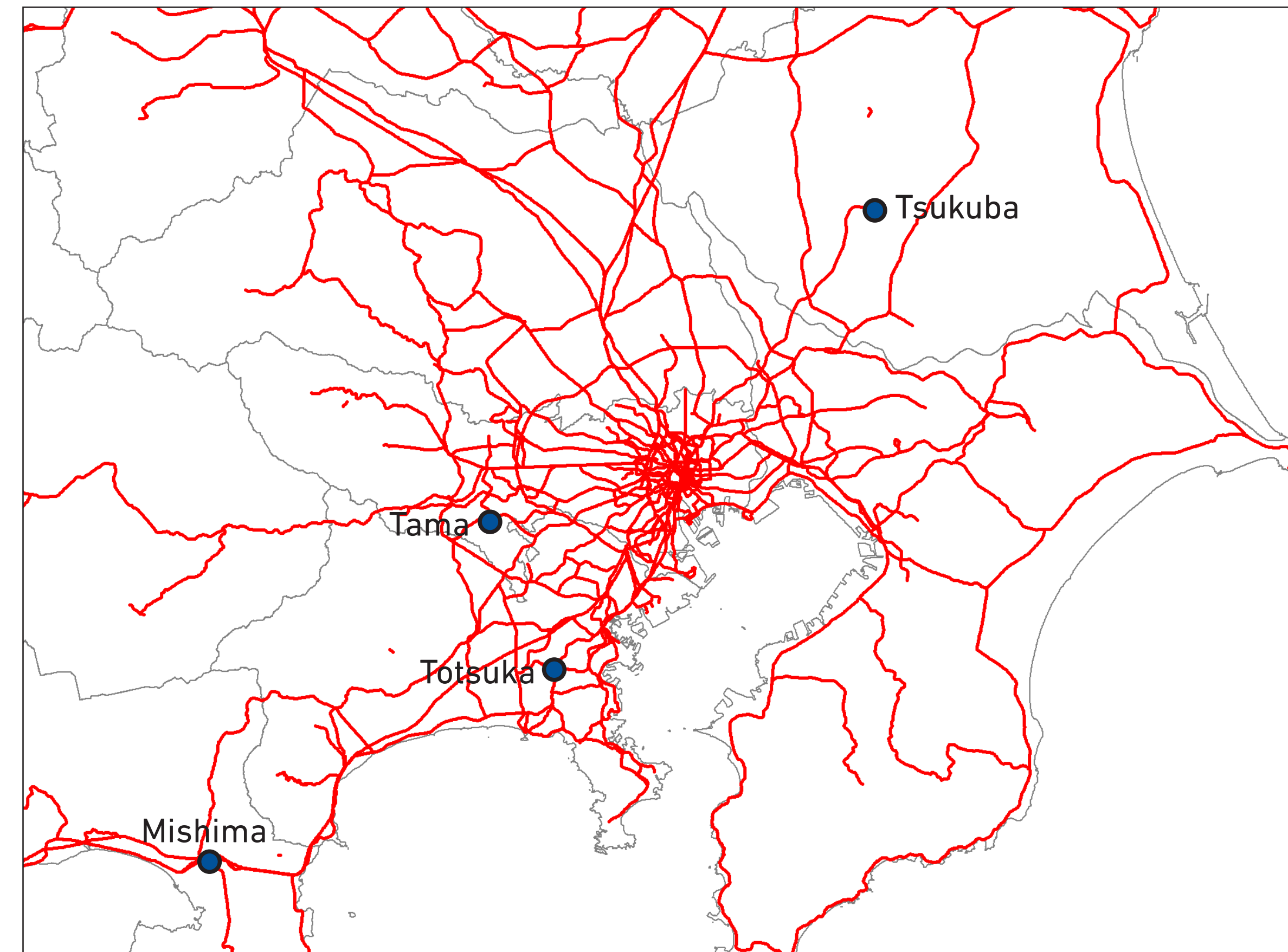


MAMORU TANIGUCHI, PROFESSOR, TSUKUBA UNIVERSITY  
**TOKYO PAST, NOW AND FUTURE: TRANSPORTATION AND DEVELOPMENT**

Railway Network of Tokyo Metropolitan Area (1960)



Railway Network of Tokyo Metropolitan Area (2010)



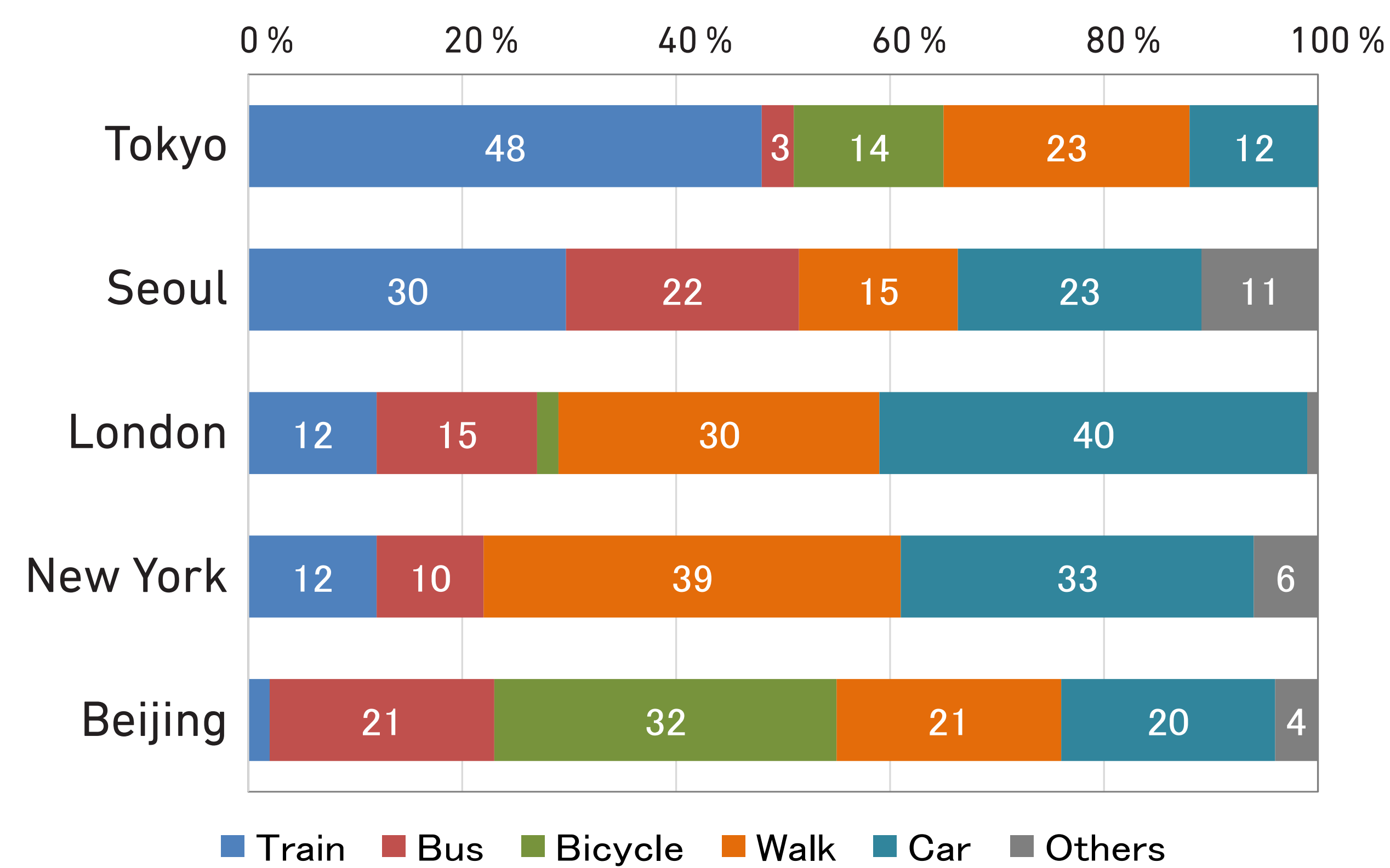
Source: Mohri, Morio: Tokyo Metropolitan Area: Change for 50 years and Future Vision - Change and Future of Metropolis According to the Date -, 2014.

Improvement of Railway Services (1960 / 2010)

	Tsukuba		Totsuka Ward		Tama		Mishima	
	1960	2010	1960	2010	1960	2010	1960	2010
<b>Population</b>	52,600	<b>214,600</b>	113,500	<b>274,300</b>	9,700	<b>147,600</b>	65,000	<b>111,900</b>
<b>Time to Tokyo (min)</b>	168	<b>62</b>	44	<b>41</b>	75	<b>58</b>	111	<b>55</b>
<b>Frequency /3h</b>	4	<b>17</b>	14	<b>57</b>	9	<b>20</b>	6	<b>12</b>

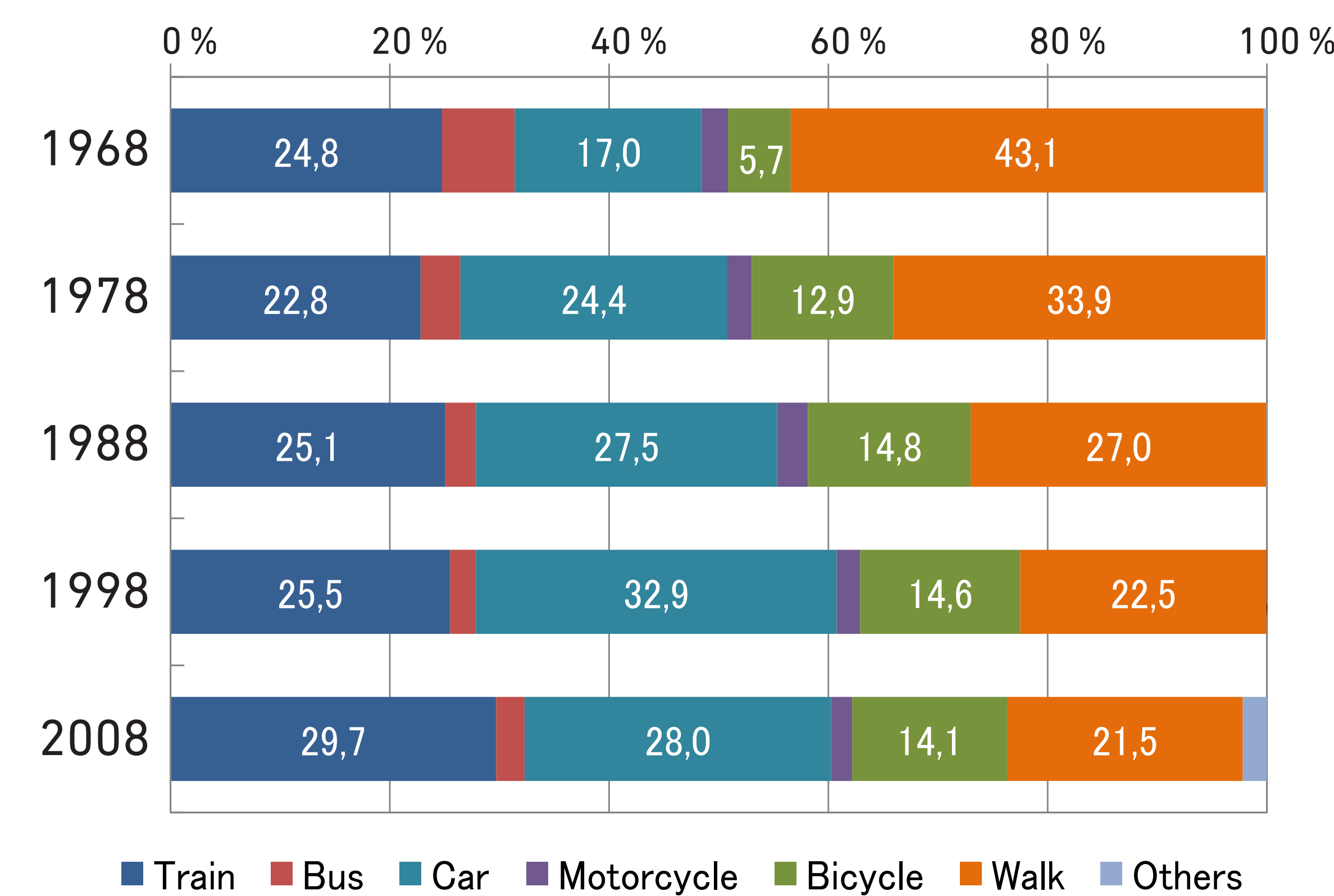
Source: Mohri et al. 2014

Transportation Share of Trips in World Cities

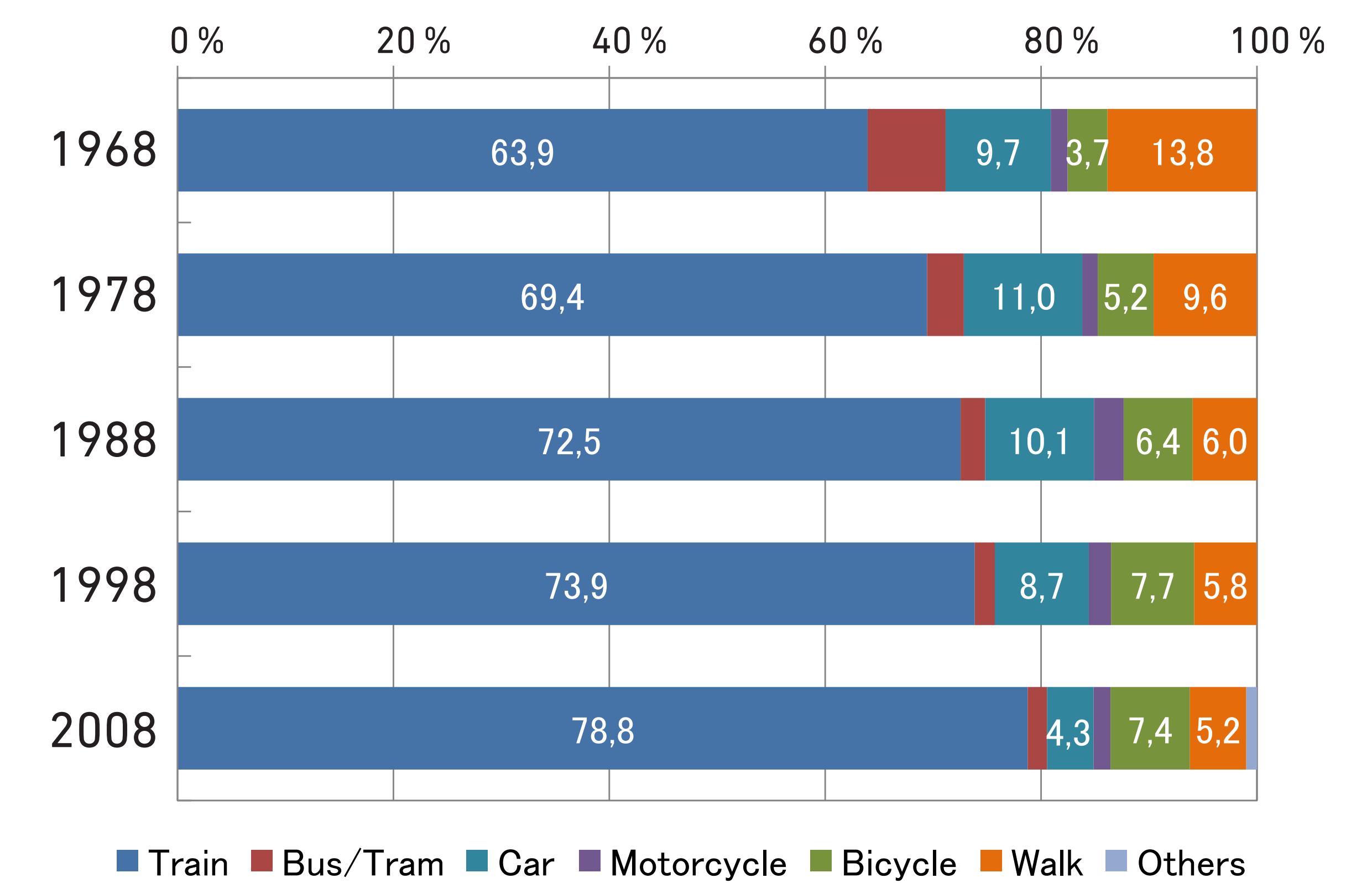


Source: Ministry of Land, Infrastructure, Transport and Tourism, 2013

Transportation Share of Trips in Tokyo Metropolitan Area



Transportation Share of Trips to Tokyo City Area

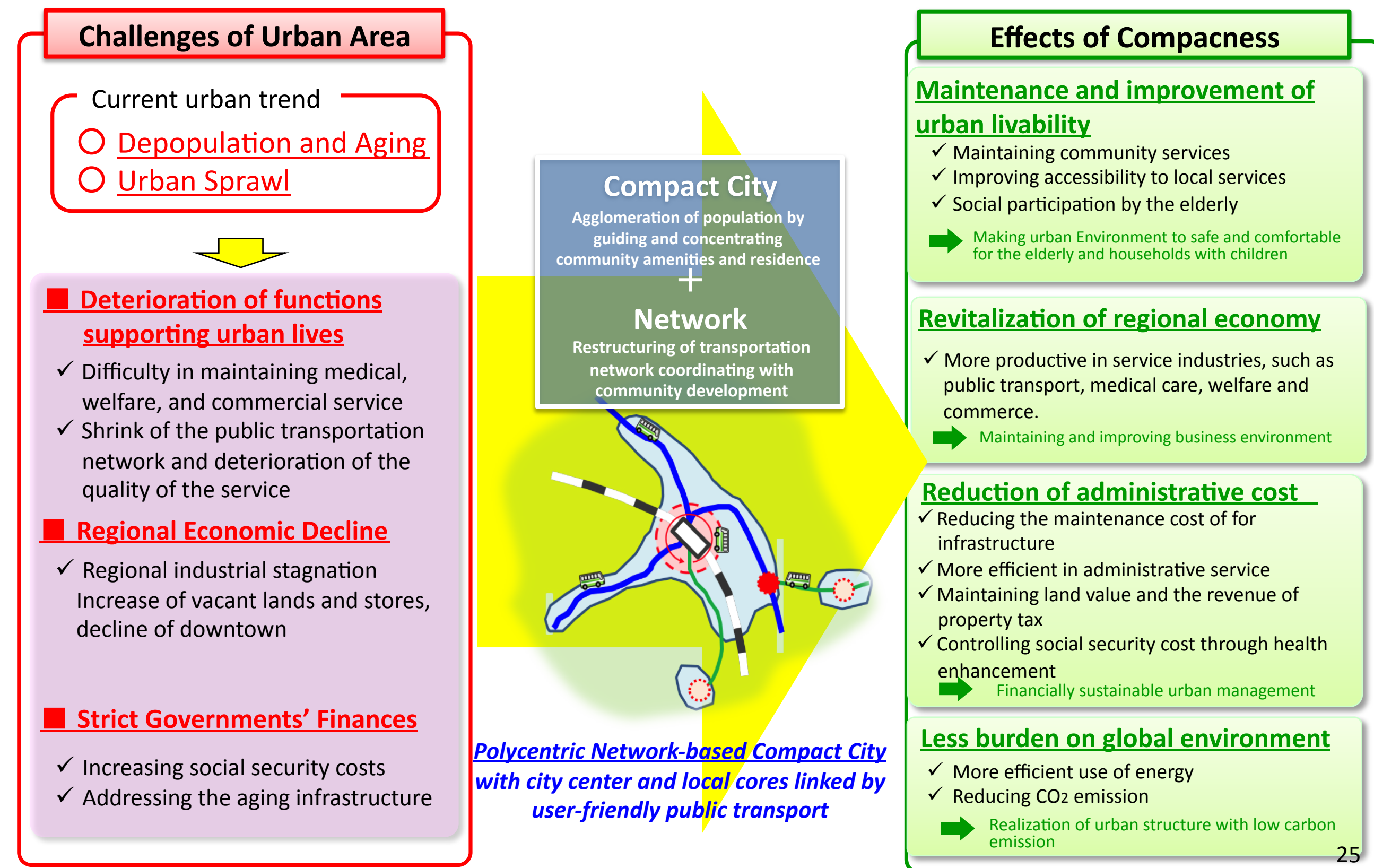


Source: Mohri, Morio: Tokyo Metropolitan Area: Change for 50 years and Future Vision - Change and Future of Metropolis According to the Date -, 2014.

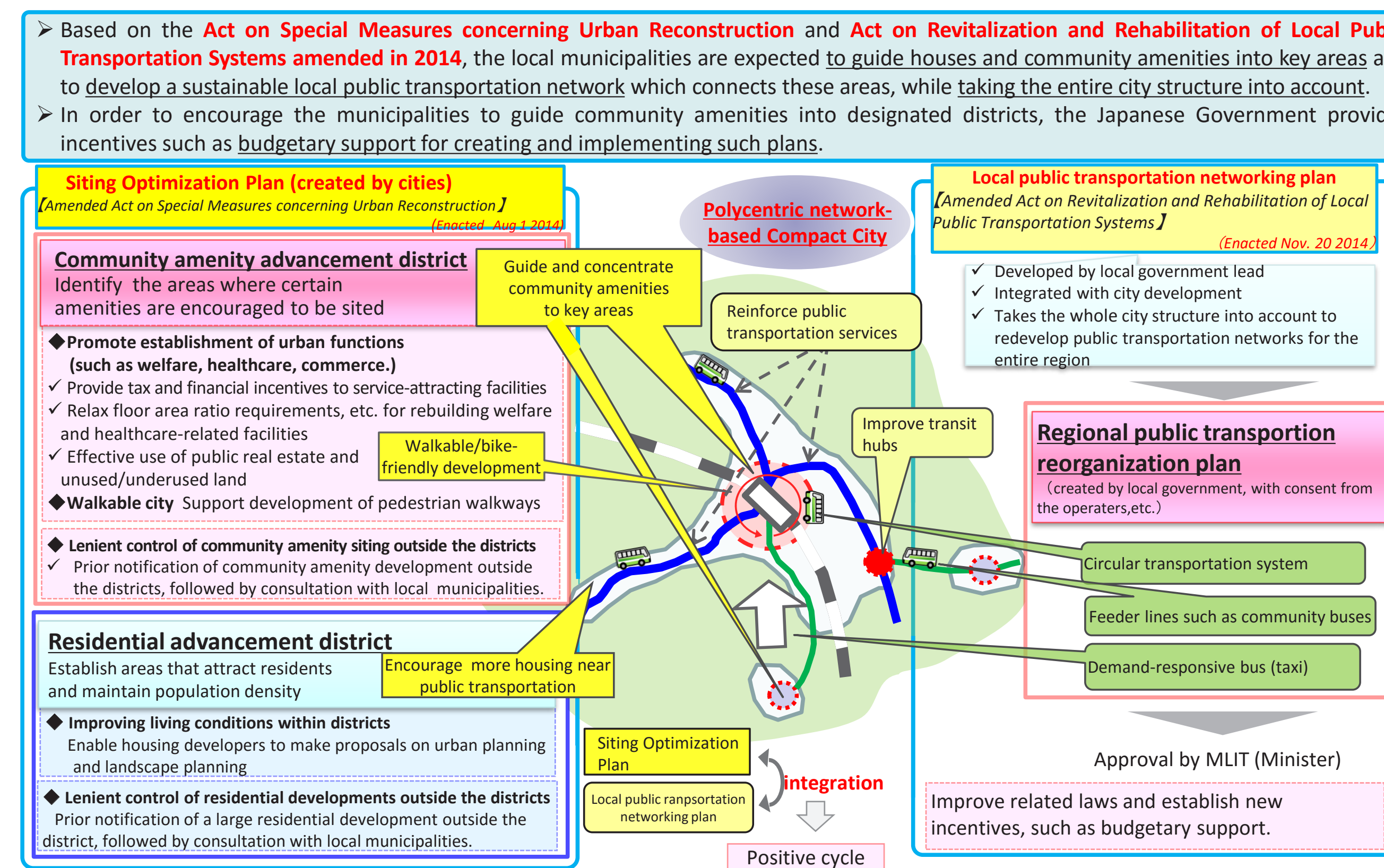


MAMORU TANIGUCHI, PROFESSOR, TSUKUBA UNIVERSITY  
**TOKYO PAST, NOW AND FUTURE: TRANSPORTATION AND DEVELOPMENT**  
 – AGING, STRUCTURAL CHANGE, SUSTAINABILITY –

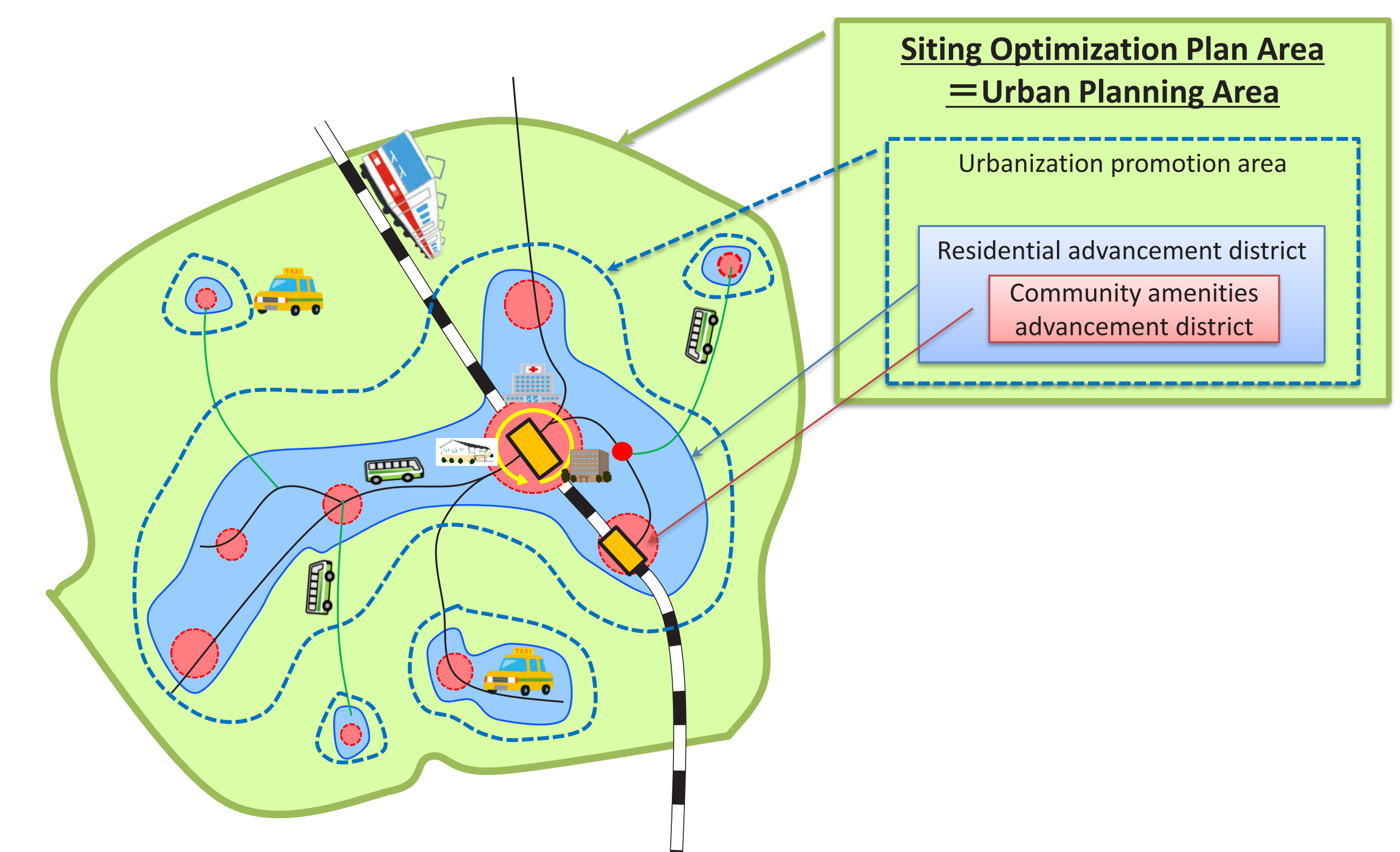
**Purpose of Network-based Compact City**



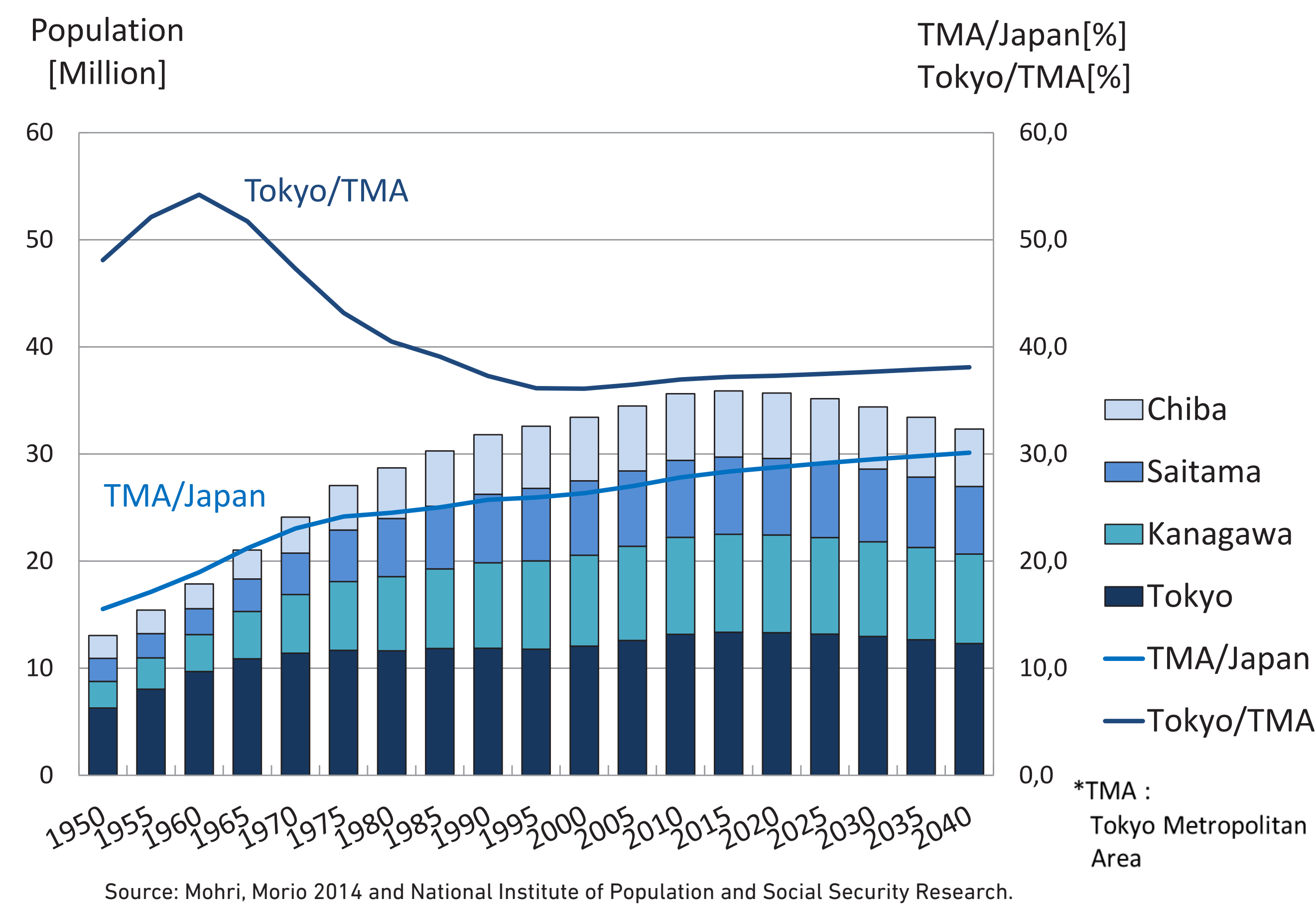
**Working toward "Network-based Compact City"**



**Siting Optimization Plan**



**Population Estimation of Tokyo Metropolitan Area**



**Population Estimation of Tokyo Metropolitan Area: Over 65 Years Old**

